

# Apartment in Ta' Xbiex



**Ta' Xbiex, Sliema and St Julians Surroundings**



**€3,250,000**

Reference No: 240171006-2334

 Total Rooms: **10**

 Floor Area (m<sup>2</sup>) : **350**

 Bathrooms: **4**

 Bedrooms: **3**

# Apartment - For Sale - Ta' Xbiex

A Meticulously finished Seafront Apartment, forming part of a prestigious building. Partly furnished for convenience, this spacious home boasts spacious accommodation spread on approximately 350sqm comprising a large open plan fitted kitchen/dining/living leading to a good-sized terrace from which one could enjoy magnificent views of the Yacht Marina and beyond. This remarkable home further comprises a guest toilet, bathrooms, 3 bedrooms (2 of which have shower en-suite and main with walk-in wardrobe). Two parking spaces are included. Must be seen to be truly appreciated!

## Features

- ✓ Video Hall Porter
- ✓ Soffit Ceilings
- ✓ A/C
- ✓ Passenger Lift
- ✓ Terrace
- ✓ Video Intercom
- ✓ En Suite
- ✓ Gypsum Plastering
- ✓ Skirting
- ✓ Double Glazed
- ✓ Balcony

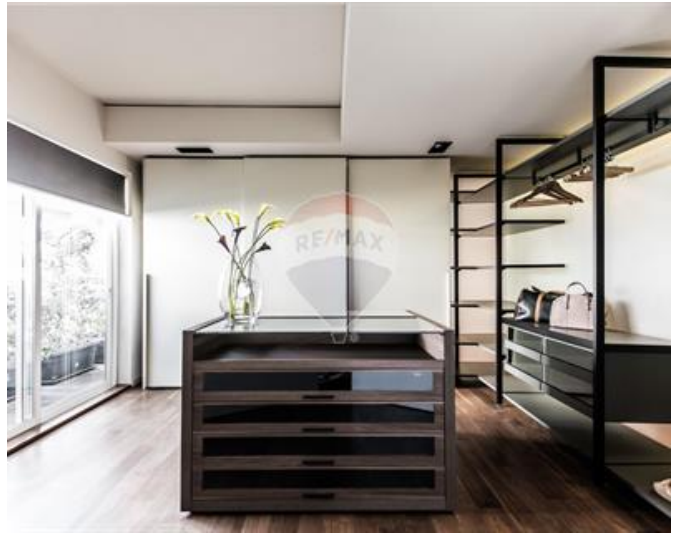
## Rooms

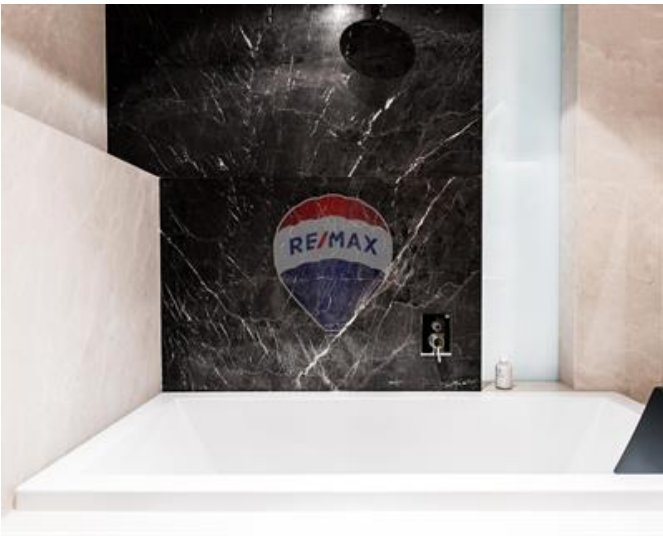
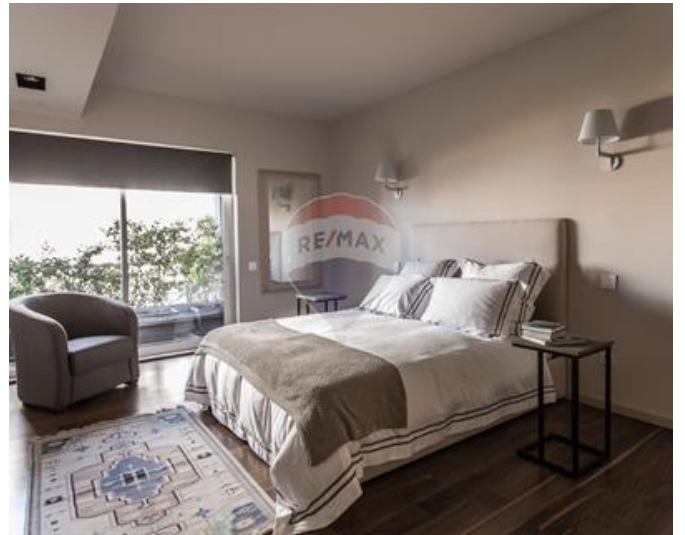
- ✓ Kitchen/Living/Dining : 19.3 x 7.1 m (137.03 m2)
- ✓ Guest Toilet : 3.3 x 1.3 m (4.29 m2)
- ✓ Double Bedroom : 4.8 x 3.7 m (17.76 m2)
- ✓ Double Bedroom : 5.1 x 3.4 m (17.34 m2)
- ✓ Double Bedroom : 3.2 x 5.2 m (16.64 m2)
- ✓ Shower Ensuite : 2.7 x 2 m (5.4 m2)
- ✓ Bathroom : 2.1 x 2.6 m (5.46 m2)
- ✓ Shower Ensuite : 2.9 x 2.4 m (6.96 m2)
- ✓ Walk In Wardrobe : 3.2 x 3.3 m (10.56 m2)
- ✓ Walk In Wardrobe : 3.3 x 2 m (6.6 m2)

- ✓ Open Space : 7.2 x 4 m (28.8 m<sup>2</sup>)
- ✓ Open Space : 3 x 4.2 m (12.6 m<sup>2</sup>)
- ✓ Open Space : 3 x 4.2 m (12.6 m<sup>2</sup>)

# Gallery









**Anna Cirrincione**

RE/MAX Luxe - Sliema

M: 99962506

E: [acirrincione@remax.com.mt](mailto:acirrincione@remax.com.mt)

T: 27992796

**RE/MAX Luxe - Sliema**

58, Tigne Seafront, Sliema, Malta