

# Villa Semi-detached in Madliena



**Madliena, Sliema and St Julians Surroundings**



**€4,795,000**

Reference No: 240171020-195

 Total Rooms: 17

 Floor Area (m<sup>2</sup>) : 700

 Bathrooms: 7

 Bedrooms: 6

# Villa Semi-detached - For Sale - Madliena

Modern, impeccably finished and maintained semi-detached villa set on 700sqm of land and situated on high grounds and situated in one of the best residential areas of Madliena. The architectural home design and lavish layout is superbly done incorporating high ceilings, large high-end surrounding apertures, beautifully designed and exposed modern staircase leading to all floors (apart from an internal lift servicing all floors), offering all the luxuries one could imagine in a modern home. Being a smart home, all functionalities are fully controlled via a centralized hub including, light, music, air conditioning, electrical blinds, CCTV, underfloor heating throughout and more. When entering ground level, an impressive double height living area captures one's attention, flooded in natural sunlight and boasting an imposing staircase leading to all floors above; a separate dining room ideal for indoor dining and entertainment, both rooms of which are surrounded by a modern, spacious and private outdoor pool area, incorporating BBQ/dining area, lounge and sitting area making it ideal for outdoor dining and entertainment. The first and second floors offer 5 spacious and luxurious bedrooms all having a well designed, modern en-suite and the main bedroom is set on the floor above having a very large walk-in wardrobe (the size of another bedroom) as well as a very spacious en-suite. Stunning open sea-views are enjoyed from its spacious terraces on the second floor as well as from roof level (where the main bedroom lies) which has been turned into another chilled area including a jacuzzi/pool to further enjoy its quiet and majestic surroundings. To further complement this dream home, one finds a fully fledged state of the art gym and spa area, incorporating a sauna, salt bath, solarium, turkish bath, additional shower, separate dining area smartly designed to fit underneath the pool area as a feature, cinema room and second kitchen to cater for the spa area. Last but not least a spacious interconnected 4 car garage and 7-8 car drive-in is also included. Comfort and Luxury have certainly been at the forefront when planning this home's design and much thought and effort have gone into it from start to finish! Highly recommend this lovely home to anyone looking for space, comfort and luxury! A true gem in its essence!

## Features

- ✓ Lift
- ✓ Kitchen/Dinette
- ✓ Video Hall Porter
- ✓ En Suite
- ✓ Entrance Hall
- ✓ Parquet Floor
- ✓ Marble Floor
- ✓ Electricity Utility
- ✓ Automatic door
- ✓ Ceramic Floor
- ✓ Tiled Stove
- ✓ Walk in Wardrobe
- ✓ Fire Place Heating
- ✓ Floor Heating
- ✓ Water Utility
- ✓ Wood Stove Heating

- ✓ Soffit Ceilings
- ✓ 3 Phase Electricity
- ✓ A/C
- ✓ Skirting
- ✓ Home Sound System
- ✓ Fire Safety
- ✓ Server Room
- ✓ Cold Room
- ✓ Double Glazed
- ✓ Pool
- ✓ Yard
- ✓ Court Yard
- ✓ Space For Pool
- ✓ Balcony
- ✓ Back Yard
- ✓ Garden
- ✓ Video Intercom
- ✓ Solar Water Heating
- ✓ Waste Room
- ✓ CCTV
- ✓ Satellite / TV/ Cable
- ✓ Communal Pool
- ✓ PVC Piping
- ✓ Towel Warmers
- ✓ Fitted Carpets
- ✓ Intelligent Lighting
- ✓ Wi-Fi
- ✓ Raised Floor
- ✓ Passenger Lift
- ✓ Service Lift
- ✓ Reverse Osmosis
- ✓ Terrace
- ✓ Central Courtyard
- ✓ Air Space
- ✓ Well
- ✓ Deck
- ✓ Roof Terrace
- ✓ Front Patio
- ✓ Solar Panels
- ✓ Pool Deck
- ✓ Loading Bay
- ✓ Alarm System
- ✓ Generators

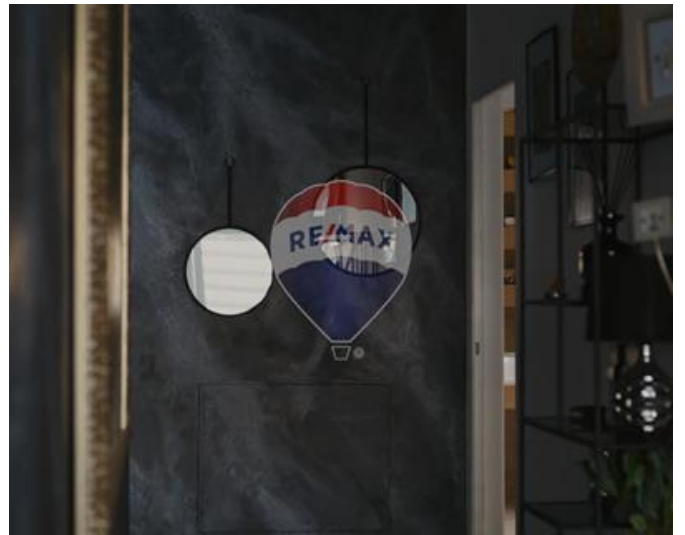
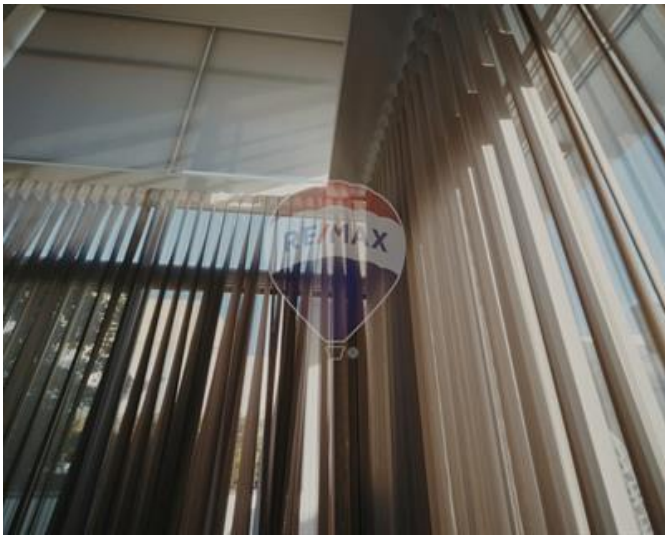
## Rooms

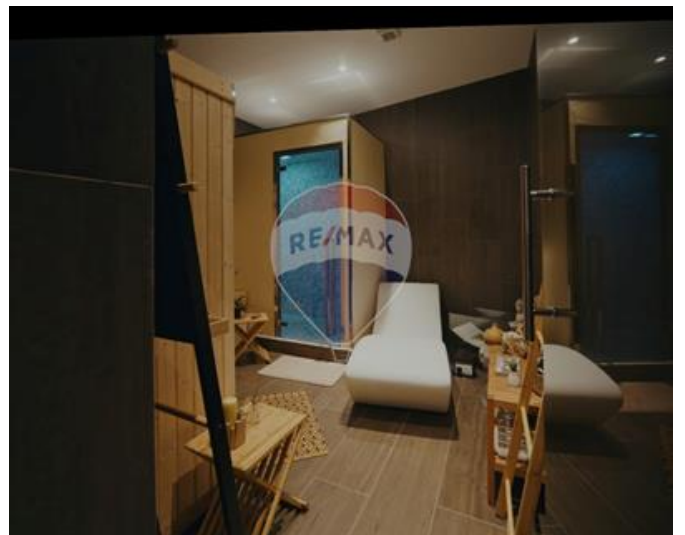
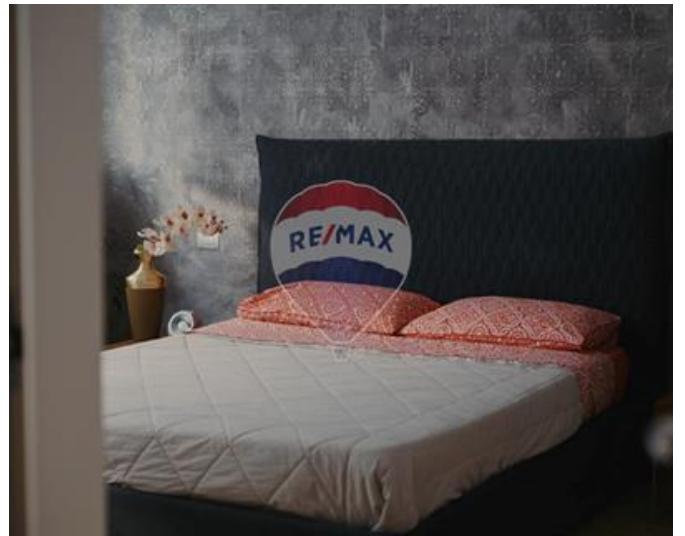
- ✓ Kitchen : 5.5 x 4.5 m (247.5 m<sup>2</sup>)
- ✓ Hall : 5 x 2 m (10 m<sup>2</sup>)
- ✓ Sitting : 6.5 x 5.5 m (35.75 m<sup>2</sup>)
- ✓ Dining : 6 x 4 m (24 m<sup>2</sup>)
- ✓ Guest Toilet : 2.15 x 2.3 m (4.94 m<sup>2</sup>)

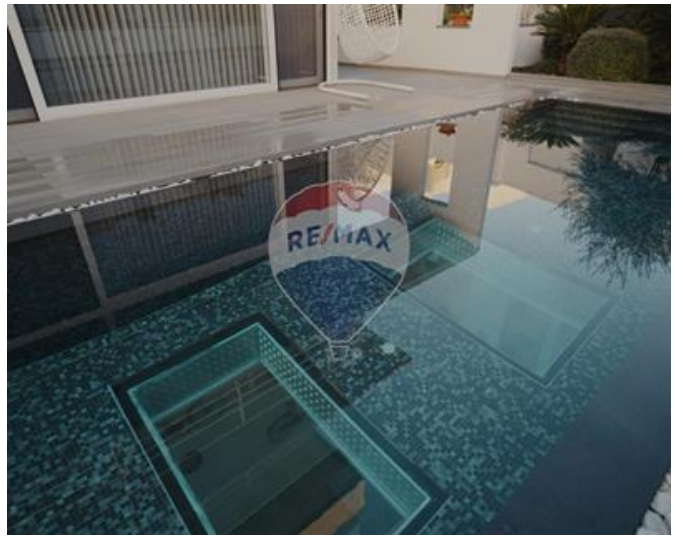
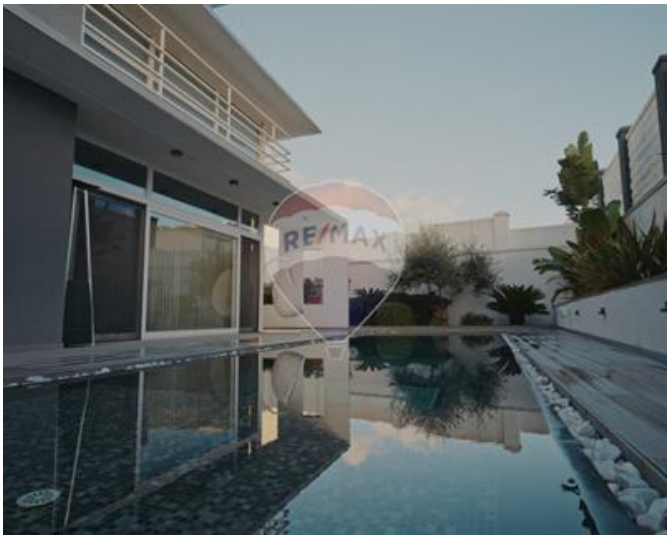
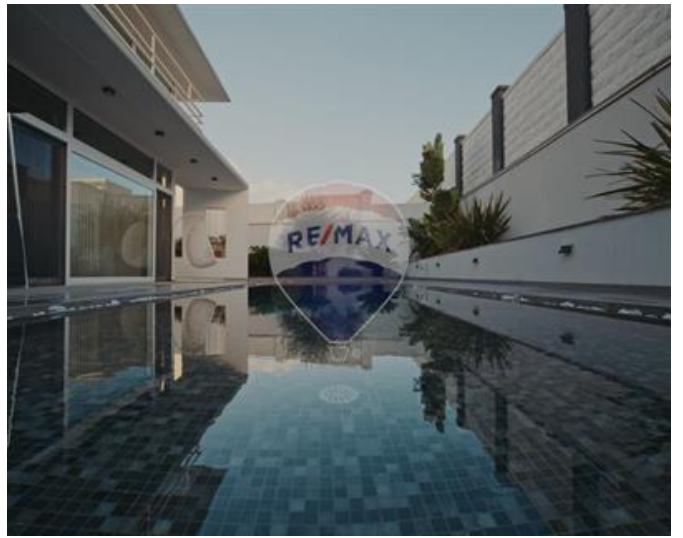
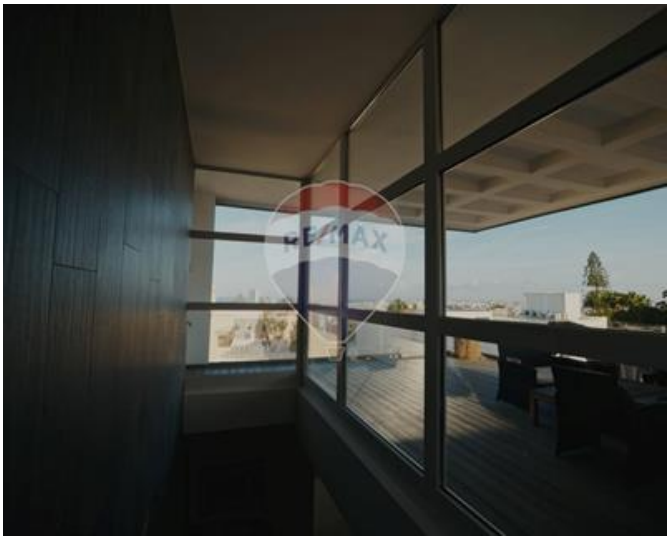
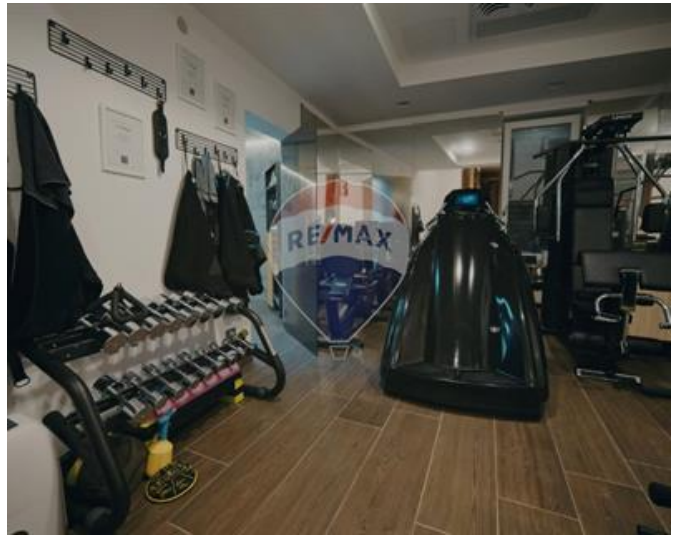
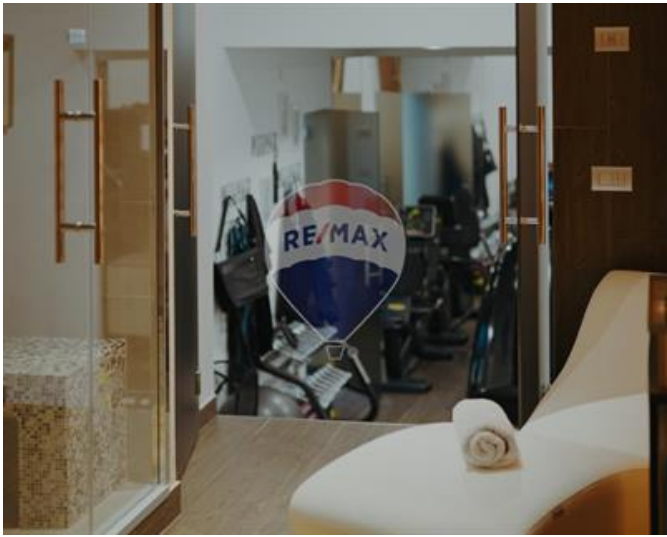
- ✓ Open Space : 2.4 x 2.3 m (5.52 m<sup>2</sup>)
- ✓ Double Bedroom : 4 x 4.25 m (17 m<sup>2</sup>)
- ✓ Bathroom Ensuite : 3 x 2 m (6 m<sup>2</sup>)
- ✓ Double Bedroom : 6.5 x 3.7 m (24.05 m<sup>2</sup>)
- ✓ Bathroom Ensuite : 4 x 2 m (8 m<sup>2</sup>)
- ✓ Walk In Wardrobe : 5 x 4 m (20 m<sup>2</sup>)
- ✓ Double Bedroom : 4 x 4.25 m (17 m<sup>2</sup>)
- ✓ Bathroom Ensuite : 3 x 2 m (6 m<sup>2</sup>)
- ✓ Double Bedroom : 6.5 x 3.7 m (24.05 m<sup>2</sup>)
- ✓ Bathroom Ensuite : 4 x 2 m (8 m<sup>2</sup>)
- ✓ Double Bedroom : 4 x 4.25 m (17 m<sup>2</sup>)
- ✓ Bathroom Ensuite : 3 x 2 m (6 m<sup>2</sup>)
- ✓ Double Bedroom : 4 x 4.25 m (17 m<sup>2</sup>)
- ✓ Bathroom Ensuite : 3 x 2 m (6 m<sup>2</sup>)

# Gallery













**Anna Cirrincione**

RE/MAX Luxe - Sliema

M: 99962506

E: [acirrincione@remax.com.mt](mailto:acirrincione@remax.com.mt)

T: 27992796

**RE/MAX Luxe - Sliema**

58, Tigne Seafront, Sliema, Malta