

# Apartment in Attard



**Attard, Central**



**€680,000**

Reference No: 240231047-180

 Total Rooms: **8**

 Floor Area (m<sup>2</sup>) : **153**

 Bathrooms: **2**

 Bedrooms: **3**

# Apartment - For Sale - Attard

ATTARD - APARTMENT A luxurious newly built 2nd-floor apartment situated in the heart of Malta, finished to high standards and offered fully furnished and fully equipped. The property comprises an open-plan kitchen, living and dining area with Bosch appliances, two large double bedrooms (one with en-suite and the other with a walk-in wardrobe), a main bathroom, a spacious office which can be converted into a third bedroom, a washroom/box room, two balconies, and an internal yard with skylight. Served with a lift and sold freehold, the apartment features air-conditioning throughout, double-glazed apertures with insect screens, ambient lighting, rain showers, a fireplace, enclosed balcony, multiple TVs including a 75-inch QLED, and data points throughout. Ready to move into. For more information contact your preferred Remax consultant.

## Features

- ✓ Lift
- ✓ En Suite
- ✓ Electricity Utility
- ✓ Balcony
- ✓ Ceramic Floor
- ✓ Entrance Hall
- ✓ Passenger Lift

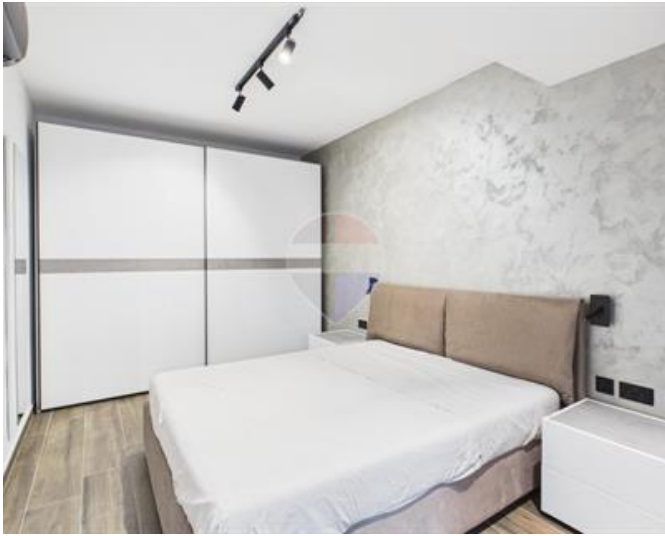
## Rooms

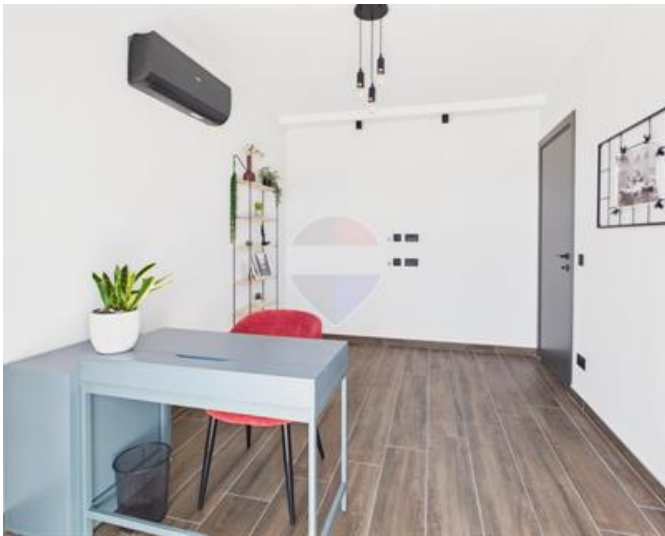
- ✓ Kitchen/Living/Dining : 11.09 x 3.7 m (41.03 m<sup>2</sup>)
- ✓ Open Space : 1.25 x 5 m (6.25 m<sup>2</sup>)
- ✓ Hallway : 1.2 x 7 m (8.4 m<sup>2</sup>)
- ✓ Double Bedroom : 4.1 x 2.85 m (11.68 m<sup>2</sup>)
- ✓ Bathroom Ensuite : 3 x 1.2 m (3.6 m<sup>2</sup>)
- ✓ Double Bedroom : 4.1 x 2.85 m (11.68 m<sup>2</sup>)
- ✓ Double Bedroom : 3.25 x 4.1 m (13.32 m<sup>2</sup>)
- ✓ Bathroom : 2 x 2.2 m (4.4 m<sup>2</sup>)
- ✓ Walk In Wardrobe : 1.82 x 2.7 m (4.91 m<sup>2</sup>)
- ✓ Box Room : 2 x 1.8 m (3.6 m<sup>2</sup>)
- ✓ Open Space : 1.25 x 2.84 m (3.55 m<sup>2</sup>)

✓ Open Space : 3 x 1.7 m (5.1 m<sup>2</sup>)

# Gallery









**Anna Cirrincione**

RE/MAX Luxe - Sliema

M: 99962506

E: [acirrincione@remax.com.mt](mailto:acirrincione@remax.com.mt)

T: 27992796

**RE/MAX Luxe - Sliema**

58, Tigne Seafront, Sliema, Malta