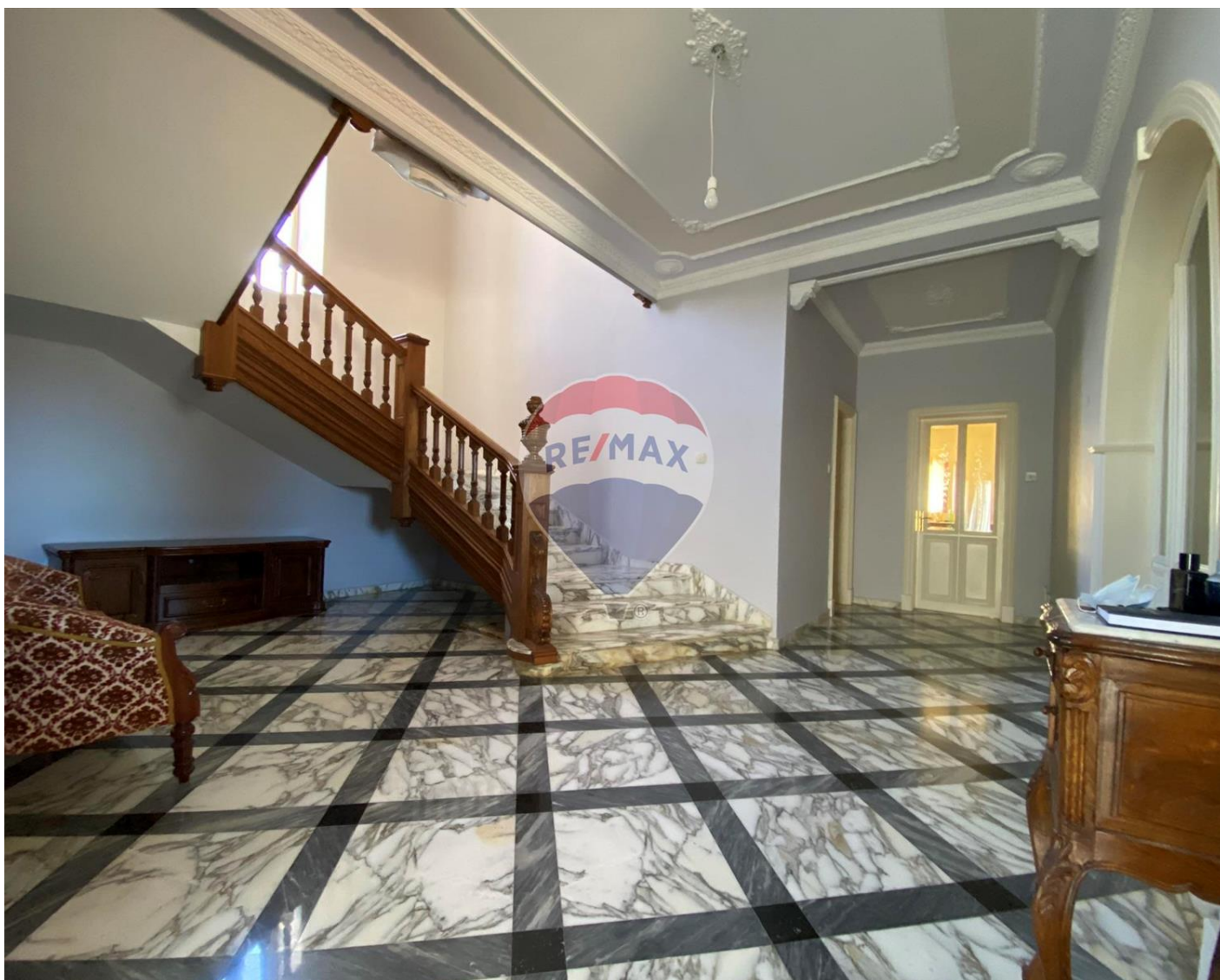


Villa Detached in Rabat



Rabat, North



€2,950,000

Reference No: 240171032-557

 Total Rooms: **11**

 Floor Area (m²) : **760**

 Bathrooms: **3**

 Bedrooms: **4**

Villa Detached - For Sale - Rabat

Rabat – Commanding surrounding country views – A Corner Palatial Villa in the peaceful and quite location of Tal- Virtu, yet minutes away from all amenities. Fully Detached and set on circa 760sqm of land. Selling Tale Quale. Impeccably finished into detail few decades ago hence obtaining its class and majestic feel. Unique architectural design and a very practical layout with privacy all around. The front garden is connected directly to a large outdoor pool deck area (10m by 4.5m swimming pool) and surrounding garden. On entering the House one finds an entrance hall imposing a marble stairway. Spacious, squarish rooms enjoying plenty of daylight all day long. All connected to terraces with views. Separate kitchen, living room, sitting room and an office. First floor are four double bedrooms. Main with shower ensuit and a bathroom. On roof level is a wash room and a large outdoor roof terrace that would be amazing to keep it as a roof garden for entertainment. Views from here are second to none - Surrounding ODZ views. Three car street level garage. A property for the true connoisseur of fine living.

Features

- ✓ Marble Floor
- ✓ Electricity Utility
- ✓ Terrace
- ✓ Well
- ✓ Deck
- ✓ Roof Terrace
- ✓ Front Patio
- ✓ Water Utility
- ✓ Pool
- ✓ Air Space
- ✓ Balcony
- ✓ Back Yard
- ✓ Garden
- ✓ Pool Deck

Rooms

- ✓ Hall : 10 x 3.5 m (35 m2)
- ✓ Kitchen : 6 x 7 m (42 m2)
- ✓ Living : 7 x 6 m (42 m2)
- ✓ Sitting : 6 x 5 m (30 m2)
- ✓ Office / Study : 4 x 3 m (12 m2)
- ✓ Double Bedroom : 5 x 5 m (25 m2)

- ✓ Double Bedroom : 5 x 5 m (25 m²)
- ✓ Double Bedroom : 4 x 5 m (20 m²)
- ✓ Double Bedroom : 4 x 5 m (20 m²)
- ✓ Shower Ensuite : 3 x 3 m (9 m²)
- ✓ Bathroom : 3 x 4 m (12 m²)
- ✓ Guest Toilet : 3 x 2 m (6 m²)
- ✓ Open Space : 25 x 5 m (125 m²)
- ✓ Open Space : 20 x 5 m (100 m²)
- ✓ Open Space : 3 x 20 m (60 m²)

Gallery







Anna Cirrincione

RE/MAX Luxe - Sliema

M: 99962506

E: acirrincione@remax.com.mt

T: 27992796

RE/MAX Luxe - Sliema

58, Tigne Seafront, Sliema, Malta