

Apartment in Sliema




Sliema, Sliema and St Julians Surroundings



€7,000

Reference No: 240531003-672

 Total Rooms: 11

 Floor Area (m²) : 0

 Bathrooms: 3

 Bedrooms: 3

Apartment - For Rent - Sliema

TIGNE POINT - Located in the heart of this much sought after commercial centre, yet forming part of a quiet, prestigious development, is this designer finished apartment. It enjoys stunning views of the Valletta bastions and Manuel Island, as well as the entrance to the Grand Harbour. This property offers spacious accommodation and plenty of natural light. Layout is in the form of an entrance hall, a large living/dining, a separate kitchen which leads onto a sizable front terrace, three double bedrooms (main with a walk-in wardrobe and en-suite), a main bathroom, a guest toilet and a laundry room/drying area. Finished to the highest of standards, all amenities are included such as LCD TV, intelligent lighting, electric blinds, cable and internet connections, air-conditioning throughout, dishwasher, washing machine as well as an underlying lock up garage. This property also enjoys the use of communal pool. One of a kind! Viewings are highly recommended!

Features

- ✓ Walk in Wardrobe
- ✓ Terrace
- ✓ Deck
- ✓ Satellite / TV/ Cable

Rooms

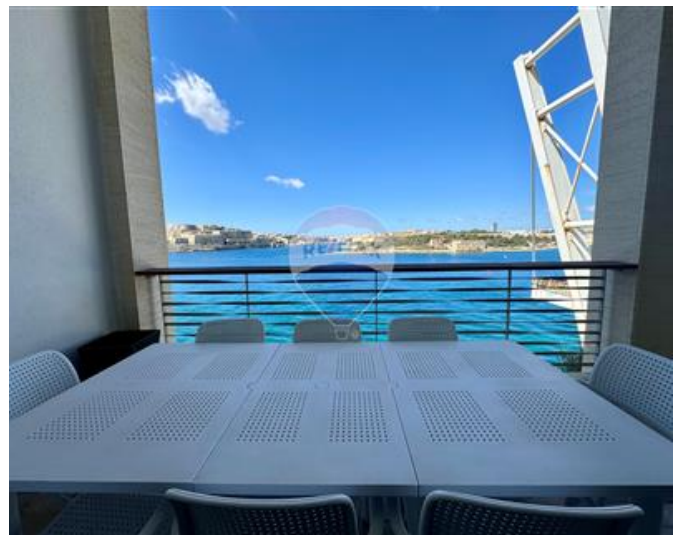
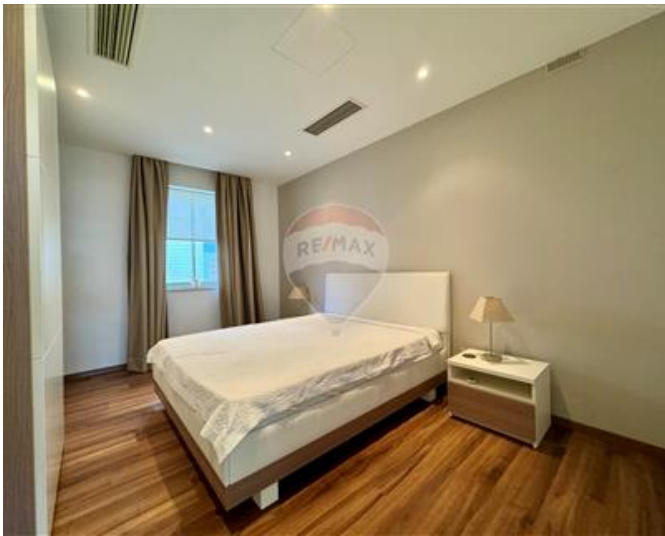
- ✓ Living/Dining : 0 x 0 m (0 m2)
- ✓ Kitchen : 0 x 0 m (0 m2)
- ✓ Double Bedroom : 0 x 0 m (0 m2)
- ✓ Walk In Wardrobe : 0 x 0 m (0 m2)
- ✓ Bathroom Ensuite : 0 x 0 m (0 m2)
- ✓ Double Bedroom : 0 x 0 m (0 m2)
- ✓ Double Bedroom : 0 x 0 m (0 m2)
- ✓ Bathroom : 0 x 0 m (0 m2)
- ✓ Laundry : 0 x 0 m (0 m2)
- ✓ Guest Toilet : 0 x 0 m (0 m2)
- ✓ Office / Study : 0 x 0 m (0 m2)

Gallery













Malcolm Caruana

RE/MAX Finest - Sliema

M: 79328343

E: malcolm@remax.com.mt

T: 22471331

RE/MAX Finest - Sliema

RE/MAX Finest, Achille Ferris Street, University Roundabout,, Msida, Malta