

# Townhouse in Sliema



**Sliema, Sliema and St Julians Surroundings**



**€4,500**

Reference No: 240531003-55

 Total Rooms: **6**

 Floor Area (m<sup>2</sup>) : **0**

 Bathrooms: **2**

 Bedrooms: **3**

# Townhouse - For Rent - Sliema

SLIEMA - A centrally located colonial townhouse with a beautiful front garden, situated within walking distance from amenities and the waterfront. Property comprises of an entrance hall, a kitchen/dining area, a living room, a back yard, three double bedrooms, two bathrooms and a private roof. A lovely family home. This is a Pet friendly property.

## Features

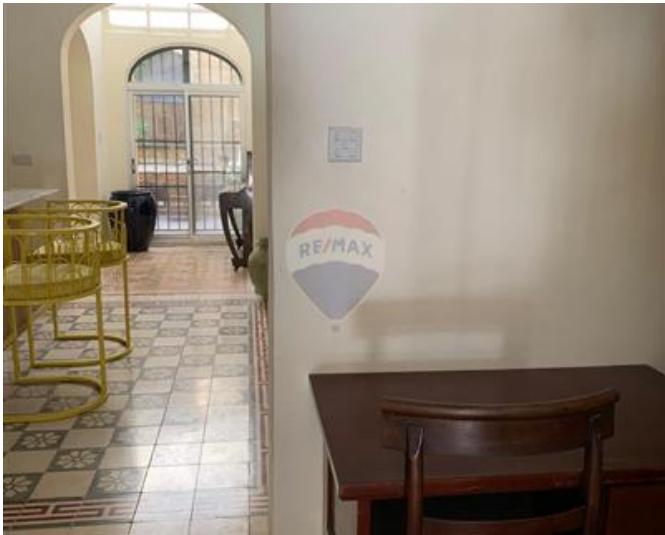
- ✓ Kitchen/Dinette
- ✓ En Suite
- ✓ Skirting
- ✓ Roof Terrace
- ✓ Ceramic Floor
- ✓ A/C
- ✓ Back Yard

## Rooms

- ✓ Kitchen/Living/Dining : 0 x 0 m (0 m2)
- ✓ Double Bedroom : 0 x 0 m (0 m2)
- ✓ Double Bedroom : 0 x 0 m (0 m2)
- ✓ Double Bedroom : 0 x 0 m (0 m2)
- ✓ Bathroom : 0 x 0 m (0 m2)
- ✓ Bathroom : 0 x 0 m (0 m2)

# Gallery











**Malcolm Caruana**

RE/MAX Finest - Sliema

M: 79328343

E: malcolm@remax.com.mt

T: 79475593

**RE/MAX Finest - Sliema**

RE/MAX Finest, 143 Tower Road, Sliema, Malta