

Apartment in Sliema



Sliema, Sliema and St Julians Surroundings



€7,000

Reference No: 240531003-301

 Total Rooms: **4**

 Floor Area (m²): **160**

 Bathrooms: **2**

 Bedrooms: **2**

Apartment - For Rent - Sliema

TIGNE POINT - Luxury apartment on the 7th floor, located directly at the water's edge, enjoying an abundance of natural light and commanding exceptional open sea views from living room as well as both bedrooms. Accommodation is spread on 160SQM, including a 20SQM external terrace. This apartment is in the form of a welcoming entrance hall, an open plan living/dining/kitchen area leading to a large terrace, guest toilet, utility room, 2 double bedrooms (main with walk-in wardrobe and shower en-suite) and a guest bathroom. Residents may also make use of communal swimming pool, enjoying spectacular views of the Valletta bastions. Contact your agent today for a viewing.

Features

- ✓ Kitchen/Dinette
- ✓ En Suite
- ✓ Soffit Ceilings
- ✓ Towel Warmers
- ✓ Intelligent Lighting
- ✓ Double Glazed
- ✓ Video Hall Porter
- ✓ Walk in Wardrobe
- ✓ Gypsum Plastering
- ✓ Skirting
- ✓ Passenger Lift
- ✓ Balcony

Rooms

- ✓ Double Bedroom : 0 x 0 m (0 m2)
- ✓ Double Bedroom : 0 x 0 m (0 m2)
- ✓ Shower Ensuite : 0 x 0 m (0 m2)
- ✓ Shower : 0 x 0 m (0 m2)

Gallery



ARTIST IMPRESSION

ARTIST IMPRESSION

ARTIST IMPRESSION

ARTIST IMPRESSION



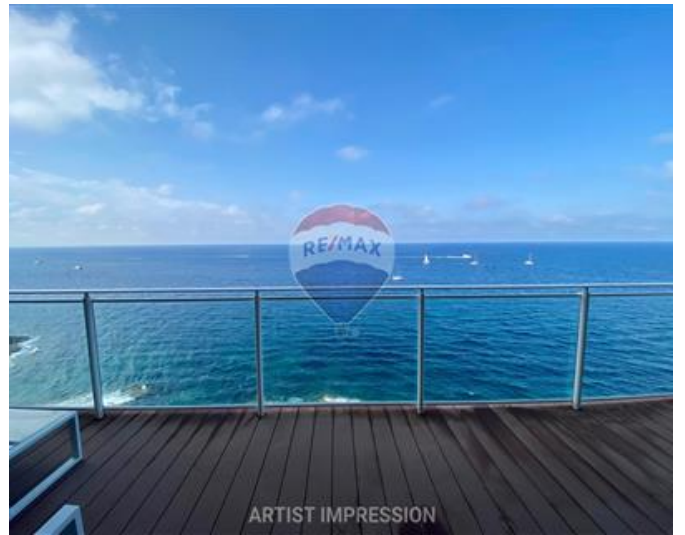
ARTIST IMPRESSION



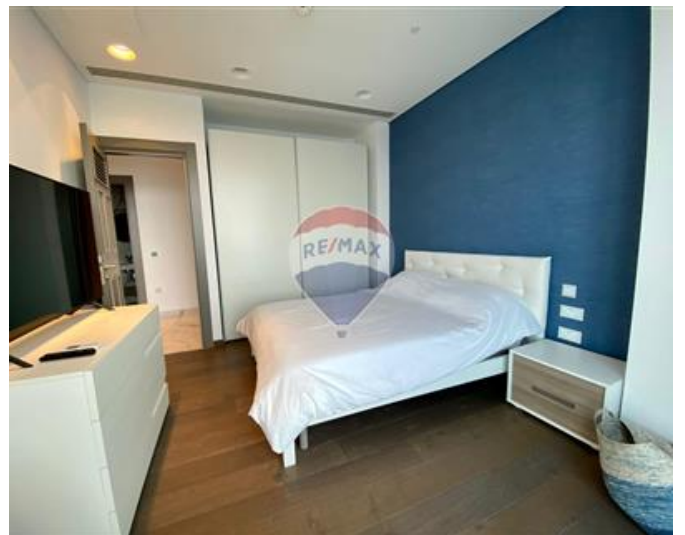
ARTIST IMPRESSION



ARTIST IMPRESSION



ARTIST IMPRESSION









Malcolm Caruana

RE/MAX Finest - Sliema

M: 79328343

E: malcolm@remax.com.mt

T: 79475593

RE/MAX Finest - Sliema

RE/MAX Finest, 143 Tower Road, Sliema, Malta