

# Penthouse Duplex in Sliema



**Sliema, Sliema and St Julians Surroundings**



**€4,300**

Reference No: 240531003-163

 Total Rooms: **7**

 Floor Area (m<sup>2</sup>) : **180**

 Bathrooms: **4**

 Bedrooms: **3**

# Penthouse Duplex - For Rent - Sliema

SLIEMA – A brand-new, seafront duplex penthouse offering luxurious living in a prime location. This exquisite property features three double bedrooms, each with its own en-suite shower, with one bedroom also enjoying a stunning front-facing sea-view balcony. The top floor boasts a spacious open-plan area, perfect for entertaining, comprising a fully equipped kitchen, living, and dining space. Additional conveniences include a guest toilet with a laundry area and a generously sized front terrace complete with outdoor furniture, ideal for relaxing and enjoying the views. This exceptional property is a must-see. Contact your agent today!

## Features

- ✓ Kitchen/Dinette
- ✓ Walk in Wardrobe
- ✓ Soffit Ceilings
- ✓ A/C
- ✓ Intelligent Lighting
- ✓ Double Glazed
- ✓ En Suite
- ✓ Water Utility
- ✓ Gypsum Plastering
- ✓ Skirting
- ✓ Passenger Lift

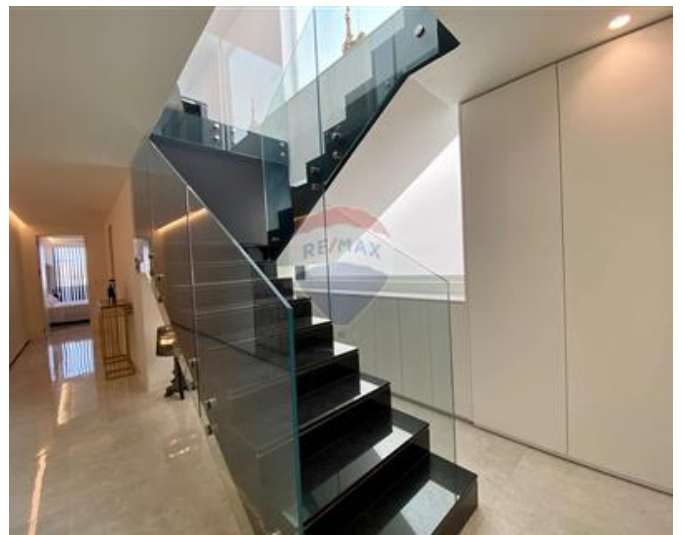
## Rooms

- ✓ Double Bedroom : 0 x 0 m (0 m2)
- ✓ Double Bedroom : 0 x 0 m (0 m2)
- ✓ Double Bedroom : 0 x 0 m (0 m2)
- ✓ Bathroom Ensuite : 0 x 0 m (0 m2)
- ✓ Bathroom Ensuite : 0 x 0 m (0 m2)
- ✓ Bathroom Ensuite : 0 x 0 m (0 m2)
- ✓ Guest Toilet : 0 x 0 m (0 m2)

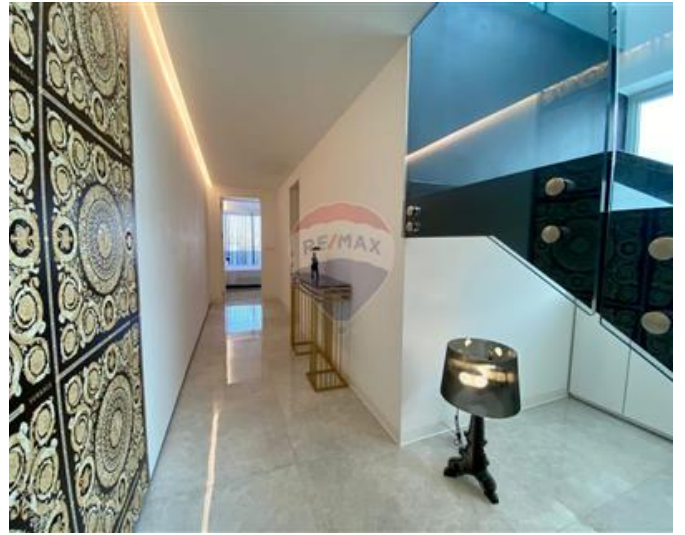
# Gallery

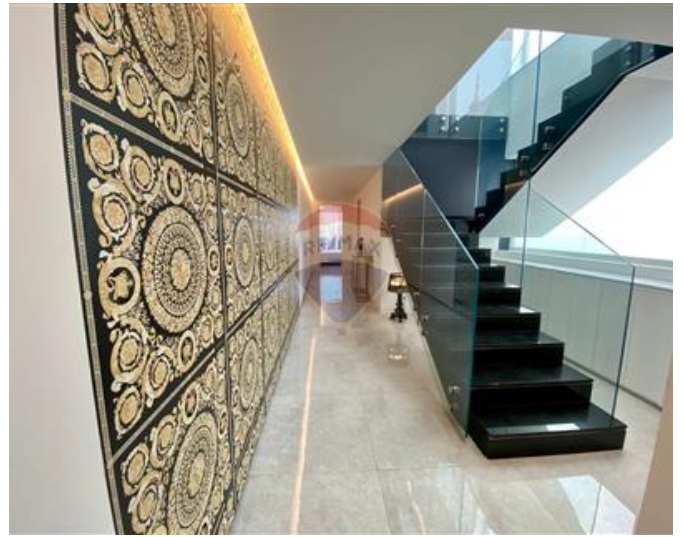
















**Malcolm Caruana**

RE/MAX Finest - Sliema

M: 79328343

E: malcolm@remax.com.mt

T: 79475593

**RE/MAX Finest - Sliema**

RE/MAX Finest, 143 Tower Road, Sliema, Malta