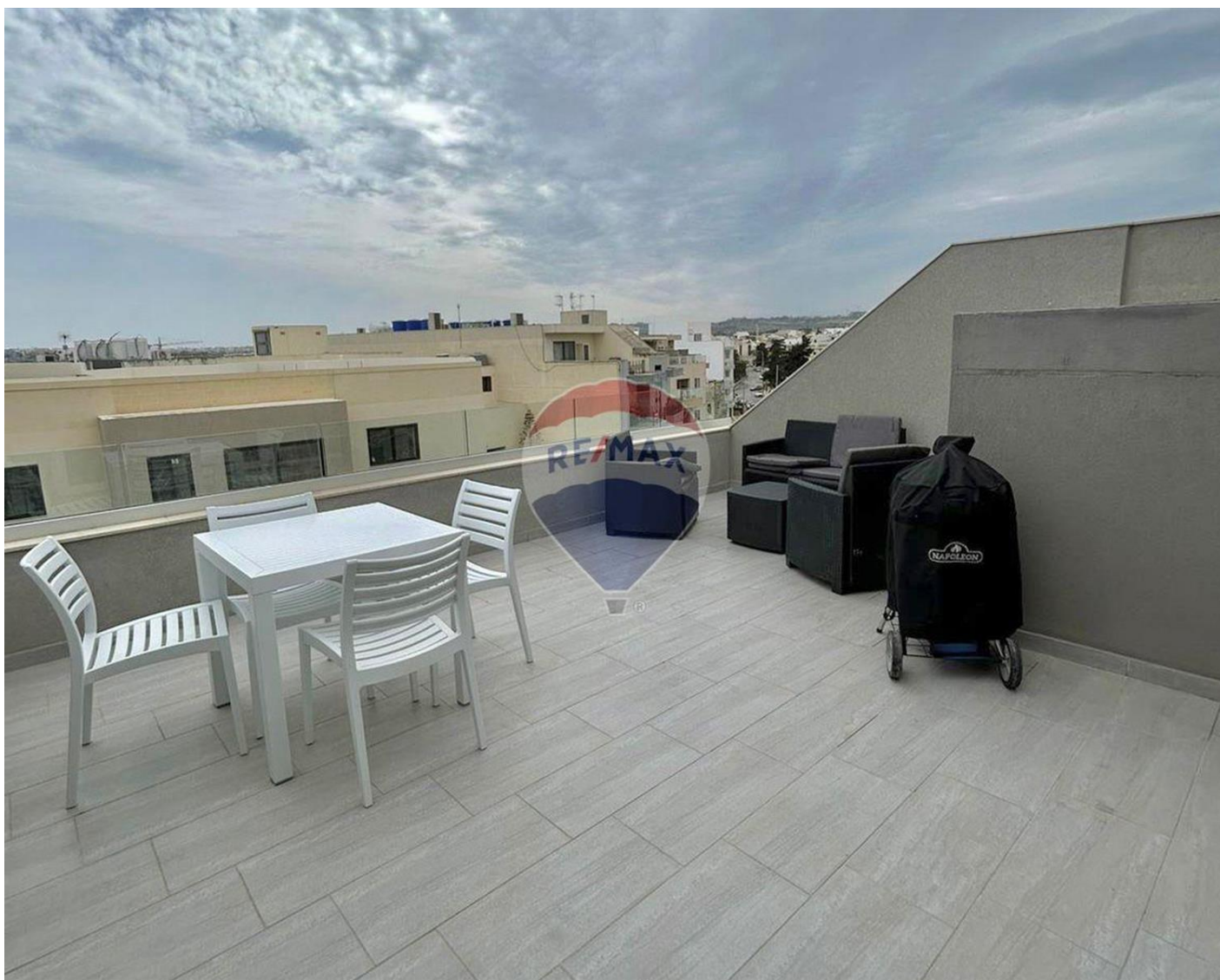


# Penthouse in Attard



**Attard, Central**



**€1,450**

Reference No: 240531001-700

 Total Rooms: **5**

 Floor Area (m<sup>2</sup>): **0**

 Bathrooms: **2**

 Bedrooms: **2**

# Penthouse - For Rent - Attard

ATTARD - Penthouse located within walking distance to all bus routes and amenities, enjoying a large terrace with views to the lovely Mdina. Internal layout is in the form of an open plan kitchen/living/dining area, two double bedrooms (Main with an-suite) and a guest bathroom. Property is being offered highly furnished and equipped, including air-conditioning and washing facilities.

## Features

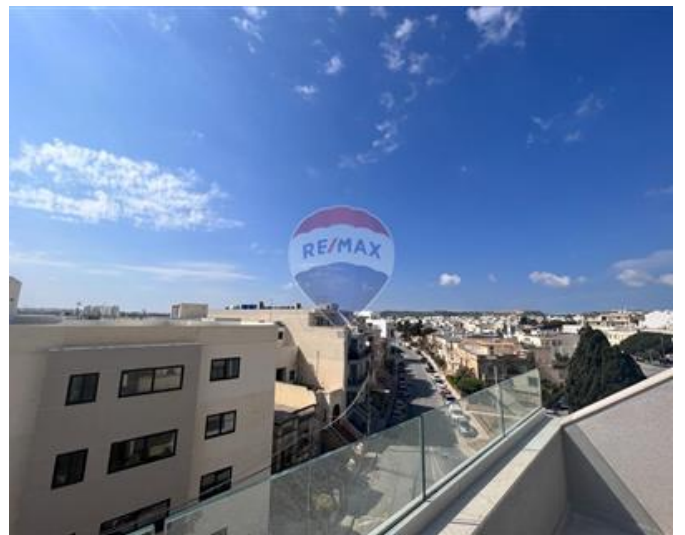
- ✓ Lift
- ✓ Water Utility
- ✓ Double Glazed
- ✓ Balcony
- ✓ En Suite
- ✓ A/C
- ✓ Terrace

## Rooms

- ✓ Kitchen/Living/Dining : 0 x 0 m (0 m2)
- ✓ Double Bedroom : 0 x 0 m (0 m2)
- ✓ Double Bedroom : 0 x 0 m (0 m2)
- ✓ Guest Toilet : 0 x 0 m (0 m2)
- ✓ Bathroom : 0 x 0 m (0 m2)

# Gallery







**RE/MAX Finest**

RE/MAX Finest - Sliema

M: 79475593

E: [fin@remax.com.mt](mailto:fin@remax.com.mt)

T: 79475593

**RE/MAX Finest - Sliema**

RE/MAX Finest, 143 Tower Road, Sliema, Malta