

# Penthouse in Swieqi



Swieqi, Sliema and St Julians Surroundings



€1,650

Reference No: 240531001-585

 Total Rooms: 6

 Floor Area (m<sup>2</sup>) : 0

 Bathrooms: 2

 Bedrooms: 3

# Penthouse - For Rent - Swieqi

Swieqi - Brand new elegant penthouse situated in a quiet area, yet close to all amenities. The property layout comprises a modern, stunning bright open plan kitchen/living/dining area, which leads onto a spacious terrace enjoying open views and Jacuzzi. Three double bedrooms (main with en-suite) and a guest bathroom, all the bedrooms have a balcony enjoying plenty of natural light. The Property is fully air-conditioned and fully equipped to the highest standards, with an oven, microwave, differentiated lamps and dishwasher. Viewing is a must.

## Features

- ✓ Lift
- ✓ Water Utility
- ✓ Service Lift
- ✓ Balcony
- ✓ En Suite
- ✓ A/C
- ✓ Terrace

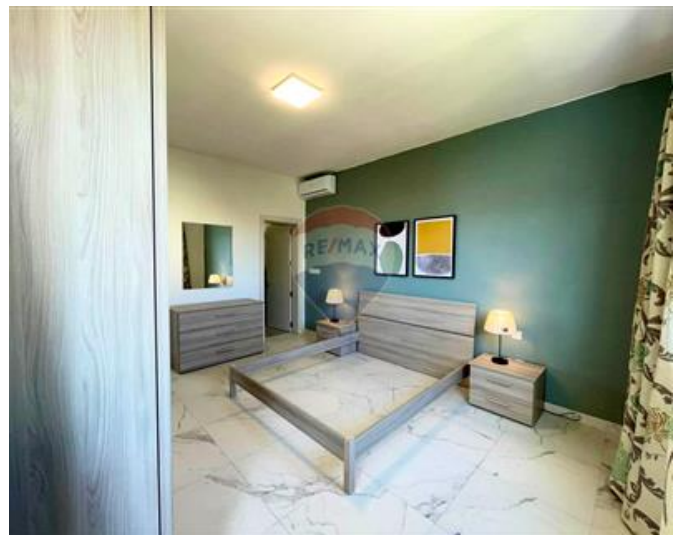
## Rooms

- ✓ Kitchen/Living/Dining : 0 x 0 m (0 m2)
- ✓ Double Bedroom : 0 x 0 m (0 m2)
- ✓ Double Bedroom : 0 x 0 m (0 m2)
- ✓ Double Bedroom : 0 x 0 m (0 m2)
- ✓ Bathroom : 0 x 0 m (0 m2)
- ✓ Bathroom Ensuite : 0 x 0 m (0 m2)

# Gallery













**RE/MAX Finest**

RE/MAX Finest - Sliema

M: 79475593

E: [fin@remax.com.mt](mailto:fin@remax.com.mt)

T: 79475593

**RE/MAX Finest - Sliema**

RE/MAX Finest, 143 Tower Road, Sliema, Malta