

Townhouse in Sliema



Sliema, Sliema and St Julians Surroundings



€1,800

Reference No: 240521001-33

 Total Rooms: 7

 Floor Area (m²) : 0

 Bathrooms: 2

 Bedrooms: 3

Townhouse - For Rent - Sliema

SLIEMA - Located in a much sought after area of Sliema, just off Tower road is this newly renovated TOWNHOUSE. Offering unique accommodation, this property is bright and spacious and comprises of an entrance hall, a living/dining area which leads onto a sizable back garden, which is ideal for entertaining; a separate kitchen and a guest toilet. Upstairs one will find two double bedrooms and a guest bathroom. On the top floor one finds the third bedroom and a roof terrace. Viewings are a must for one to appreciate!

Features

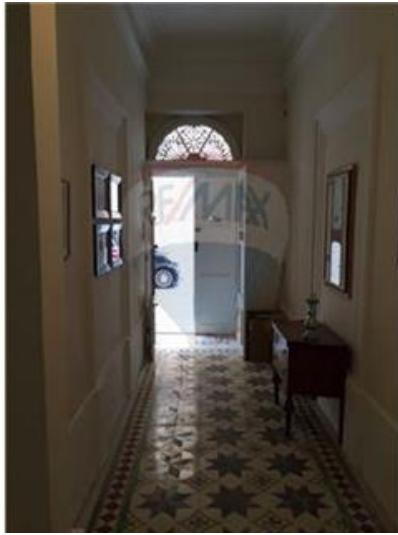
- ✓ Balcony
- ✓ Roof Terrace

Rooms

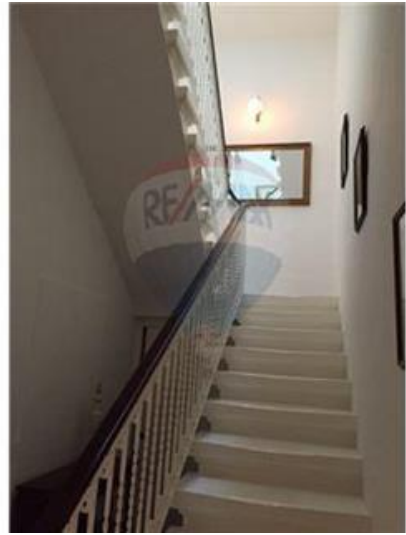
- ✓ Living/Dining : 0 x 0 m (0 m2)
- ✓ Double Bedroom : 0 x 0 m (0 m2)
- ✓ Bathroom : 0 x 0 m (0 m2)
- ✓ Kitchen : 0 x 0 m (0 m2)
- ✓ Double Bedroom : 0 x 0 m (0 m2)
- ✓ Single Bedroom : 0 x 0 m (0 m2)
- ✓ Guest Toilet : 0 x 0 m (0 m2)

Gallery













RE/MAX Commercial Partners

RE/MAX Commercial Partners - Msida

M: 99467221

E: commpartners@remax.com.mt

T: 99467221

RE/MAX Commercial Partners - Msida

Realco Building, Floor 3, Triq il-Punent, Msida, Malta