

Penthouse in Swieqi



Swieqi, Sliema and St Julians Surroundings



€1,500

Reference No: 240521001-225

 Total Rooms: **5**

 Floor Area (m²): **90**

 Bathrooms: **2**

 Bedrooms: **2**

Penthouse - For Rent - Swieqi

This brand-new penthouse on the fourth story is located in Swieqi, a municipality that is in high demand. The master bedroom with an en-suite shower room and a TV, a twin bedroom, and a guest bathroom are all included in the 90 square meters of space. The open concept kitchen, living, and dining area opens onto a 10-square-meter terrace with distant sea views and outdoor furniture. Both dorms open onto a balcony at the back. This home has an intercom, double glazing, bug screens, and air conditioning throughout. Great value for the money.

Features

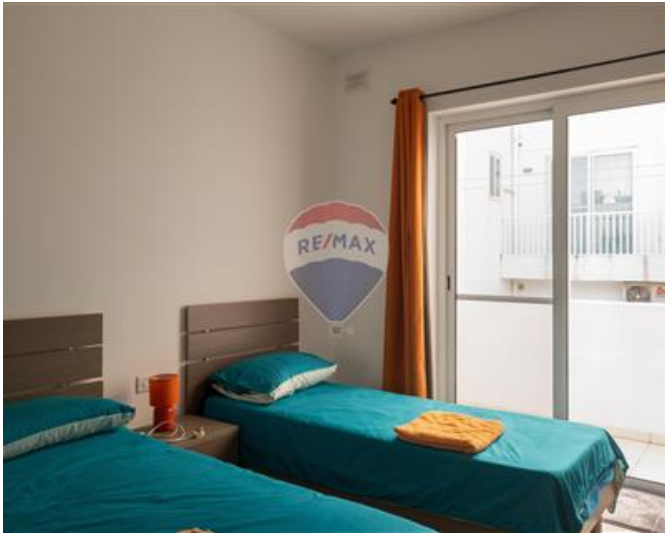
- ✓ Lift
- ✓ Kitchen/Dinette
- ✓ Video Hall Porter
- ✓ Water Utility
- ✓ A/C
- ✓ Terrace
- ✓ Natural Gas
- ✓ Ceramic Floor
- ✓ En Suite
- ✓ Electricity Utility
- ✓ Double Glazed
- ✓ Balcony

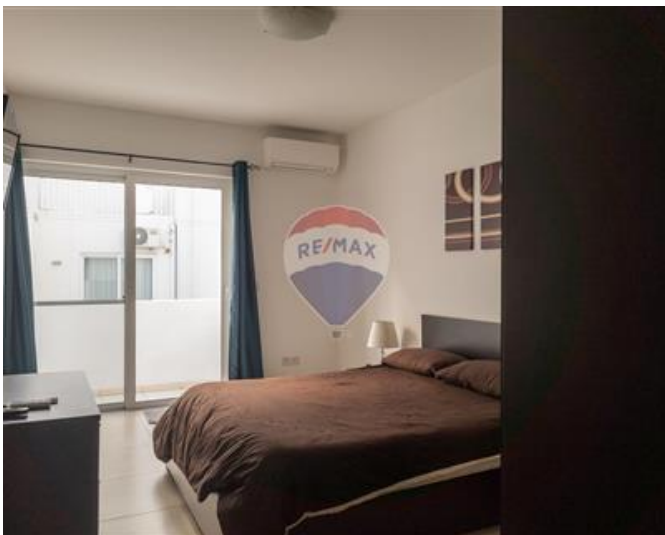
Rooms

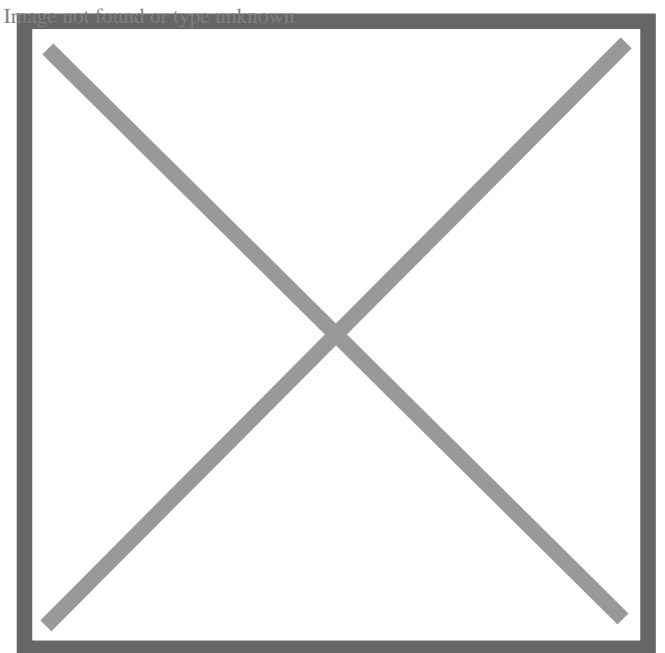
- ✓ Kitchen/Living/Dining : 0 x 0 m (0 m2)
- ✓ Double Bedroom : 0 x 0 m (0 m2)
- ✓ Bathroom : 0 x 0 m (0 m2)
- ✓ Single Bedroom : 0 x 0 m (0 m2)
- ✓ Guest Toilet : 0 x 0 m (0 m2)

Gallery













RE/MAX Commercial Partners

RE/MAX Commercial Partners - Msida

M: 99467221

E: commpartners@remax.com.mt

T: 99467221

RE/MAX Commercial Partners - Msida

Realco Building, Floor 3, Triq il-Punent, Msida, Malta