

# Shop in Sliema




## Sliema, Sliema and St Julians Surroundings



**€215,000**

Reference No: 240511038-4

 Total Rooms: **0**

 Floor Area (m<sup>2</sup>): **35**

 Bathrooms: **0**

 Bedrooms: **0**

# Shop - For Sale - Sliema

Located in a highly sought-after area of Sliema, this 35 square meter space is ideal for a shop or office, falling under Class 4B use. Offered in shell form, the property provides flexibility to design and finish the space to your needs, with an optional finishing package available at an additional cost. Its central location places it just moments away from key amenities, shops, and restaurants, making it an excellent opportunity for a small business looking to establish itself in one of Malta's most vibrant commercial zones

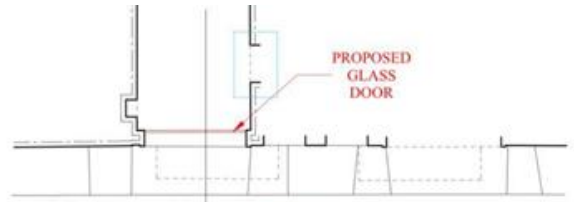
## Features

## Rooms

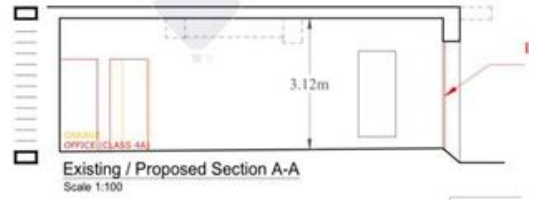
- ✓ Open Space : 5 x 7 m (35 m<sup>2</sup>)

# Gallery





Existing / Proposed Ground Floor  
Scale 1:100



Existing / Proposed Section A-A  
Scale 1:100



**Stefanie Weber**

RE/MAX Elite - Sliema

M: 99644691

E: stefanie@remax.com.mt

T: 21344204

**RE/MAX Elite - Sliema**

241, Tower Road, Sliema, Malta