

Penthouse in Gzira



Gzira, Sliema and St Julians Surroundings



€900

Reference No: 240511019-38

 Total Rooms: **4**

 Floor Area (m²): **0**

 Bathrooms: **2**

 Bedrooms: **2**

Penthouse - For Rent - Gzira

Bright and airy two double bedroom penthouse enjoying country views from it's front south facing terrace. Property layout is an open plan kitchen/ living, main bathroom and en suite shower and back balcony.

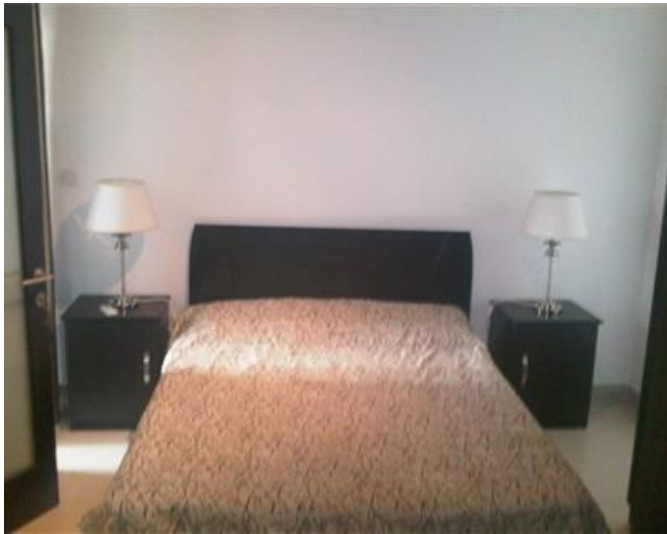
Features

- ✓ Terrace

Rooms

- ✓ Double Bedroom : 0 x 0 m (0 m2)
- ✓ Double Bedroom : 0 x 0 m (0 m2)
- ✓ Bathroom : 0 x 0 m (0 m2)
- ✓ Bathroom : 0 x 0 m (0 m2)

Gallery









Paola Leticia Sosa
RE/MAX Elite - Sliema

M: 99052911
E: psosa@remax.com.mt
T: 21344204

RE/MAX Elite - Sliema
241, Tower Road, Sliema, Malta