

Apartment in Paola



Paola, South



€375,000

Reference No: 240511015-19

 Total Rooms: 7

 Floor Area (m²) : 107

 Bathrooms: 2

 Bedrooms: 3

Apartment - For Sale - Paola

Paola - APARTMENT situated on the 2nd floor, served by a lift in a smart block close to all amenities. The layout comprises a spacious open plan kitchen, living, and dining area, a bathroom, 3 bedrooms (main with en-suite) and a back balcony. For a viewing or more information, kindly get in touch with your preferred RE/MAX property consultant

Features

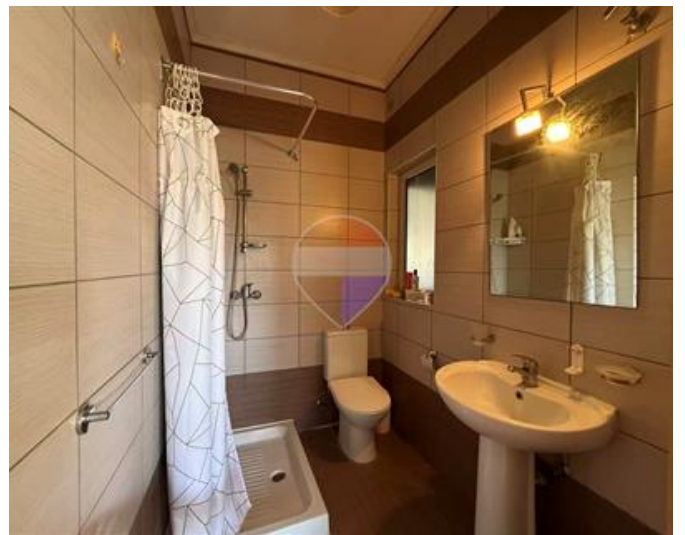
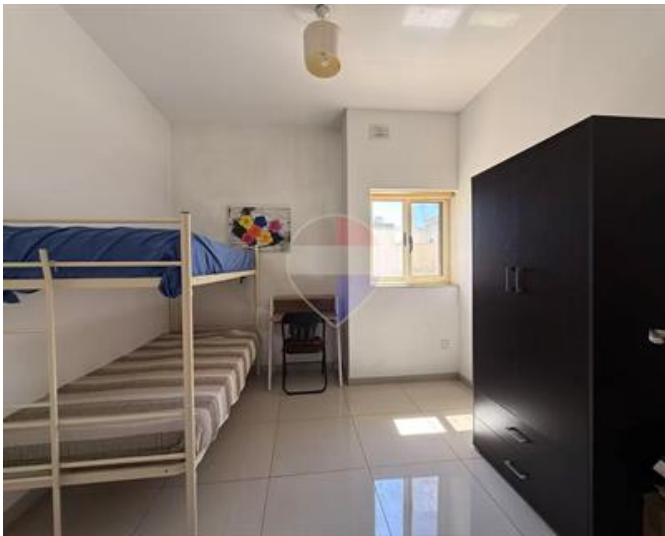
- ✓ Lift
- ✓ Ceramic Floor
- ✓ Soffit Ceilings
- ✓ Skirting
- ✓ Double Glazed
- ✓ Kitchen/Dinette
- ✓ En Suite
- ✓ A/C
- ✓ Passenger Lift
- ✓ Balcony

Rooms

- ✓ Living : 6.4 x 3.3 m (21.12 m²)
- ✓ Kitchen : 2.67 x 3.4 m (9.08 m²)
- ✓ Bathroom : 2.1 x 3.2 m (6.72 m²)
- ✓ Double Bedroom : 4.2 x 3.3 m (13.86 m²)
- ✓ Double Bedroom : 3.9 x 3.6 m (14.04 m²)
- ✓ Double Bedroom : 4.45 x 4.4 m (19.58 m²)
- ✓ Shower Ensuite : 2.1 x 1.2 m (2.52 m²)

Gallery









Zhu Qiu

RE/MAX Elite - Sliema

M: 99258879

E: zhu@remax.com.mt

T: 22471300

RE/MAX Elite - Sliema

241, Tower Road, Sliema, Malta