

Apartment in Sliema



Sliema, Sliema and St Julians Surroundings



€3,500

Reference No: 240511013-297

 Total Rooms: **7**

 Floor Area (m²) : **0**

 Bathrooms: **2**

 Bedrooms: **2**

Apartment - For Rent - Sliema

TIGNE POINT: Spacious corner APARTMENT, situated in the most prestigious complex and central part of SLIEMA. This apartment comprises of an entrance hall, large lounge area leading on to a good size terrace ideal for entertaining, dining room leading onto a balcony, kitchen/breakfast and a pantry. Also 2 double bedrooms both with balconies and one of which has an ensuite both with shower and bath, main bathroom, laundry room and an optional car space. This property is being offered modernly furnished and fully equipped. GOOD VALUE FOR MONEY

Features

- ✓ Lift
- ✓ Kitchen/Dinette
- ✓ En Suite
- ✓ Towel Warmers
- ✓ Skirting
- ✓ Double Glazed
- ✓ Automatic door
- ✓ Ceramic Floor
- ✓ Soffit Ceilings
- ✓ A/C
- ✓ Passenger Lift
- ✓ Terrace

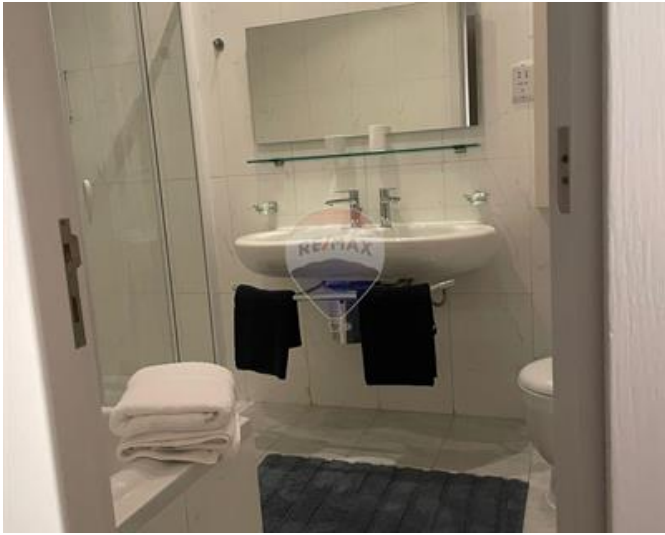
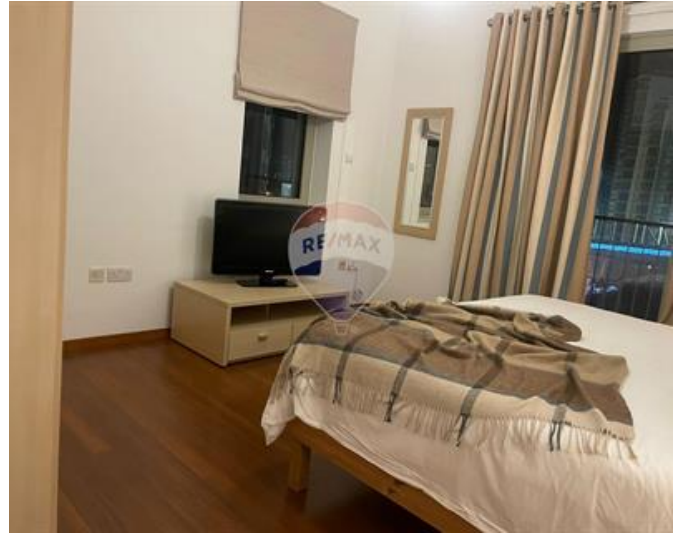
Rooms

- ✓ Kitchen/Living/Dining : 0 x 0 m (0 m2)
- ✓ Double Bedroom : 0 x 0 m (0 m2)
- ✓ Double Bedroom : 0 x 0 m (0 m2)
- ✓ Bathroom : 0 x 0 m (0 m2)
- ✓ Shower Ensuite : 0 x 0 m (0 m2)
- ✓ Laundry : 0 x 0 m (0 m2)
- ✓ Kitchen Pantry : 0 x 0 m (0 m2)

Gallery









Lorraine Bonnici
RE/MAX Elite - Sliema

M: 99236121
E: lorraine@remax.com.mt
T: 21344204

RE/MAX Elite - Sliema
241, Tower Road, Sliema, Malta