

Apartment in Sliema



Sliema, Sliema and St Julians Surroundings



€2,000

Reference No: 240511013-29

 Total Rooms: **5**

 Floor Area (m²) : **0**

 Bathrooms: **2**

 Bedrooms: **1**

Apartment - For Rent - Sliema

TIGNE POINT - Forming part of an up market development, in the heart of this much sought after area, minutes away from the shops and cafes, is this bright and spacious apartment.

Accommodation comprises of an entrance hall, an open plan kitchen/living/dining which leads onto a sizable front terrace overlooking a courtyard; one double bedroom, an en-suite shower room, a laundry room and a guest toilet. All amenities are included, as well as an underlying car space and the use of a communal swimming pool. Not to be missed!

Features

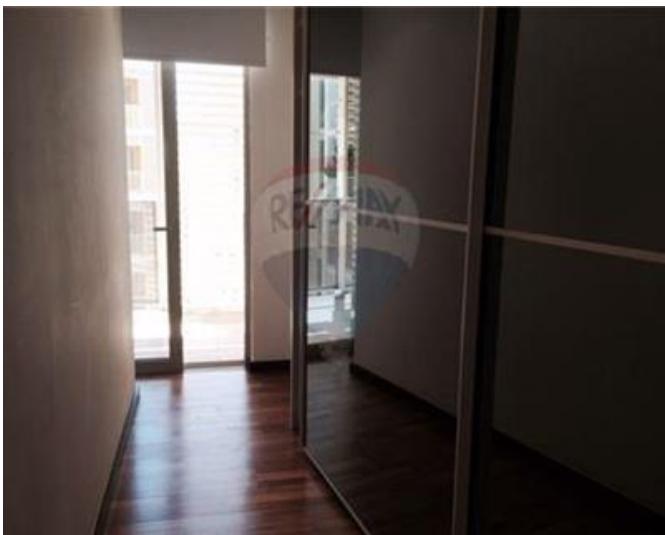
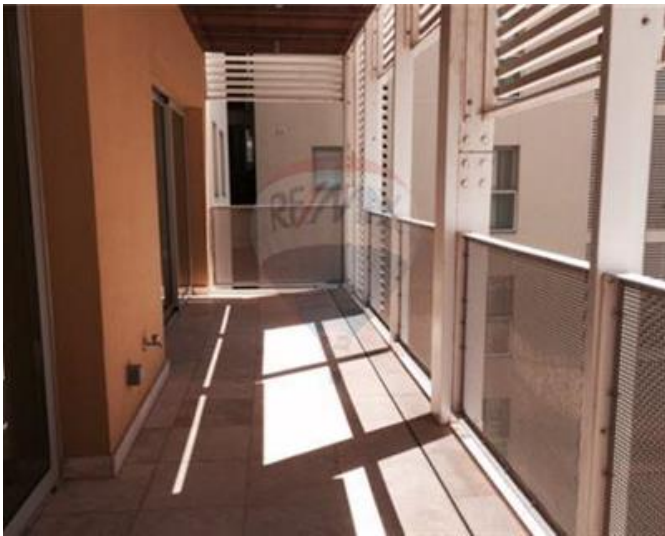
- ✓ Pool
- ✓ Terrace

Rooms

- ✓ Double Bedroom : 0 x 0 m (0 m2)
- ✓ Kitchen/Living/Dining : 0 x 0 m (0 m2)
- ✓ Shower Ensuite : 0 x 0 m (0 m2)
- ✓ Laundry : 0 x 0 m (0 m2)
- ✓ Guest Toilet : 0 x 0 m (0 m2)

Gallery









Lorraine Bonnici

RE/MAX Elite - Sliema

M: 99236121

E: lorraine@remax.com.mt

T: 21344204

RE/MAX Elite - Sliema

241, Tower Road, Sliema, Malta