

# Apartment in Sliema



**Sliema, Sliema and St Julians Surroundings**



**€1,650**

Reference No: 240511013-208

 Total Rooms: **6**

 Floor Area (m<sup>2</sup>) : **0**

 Bathrooms: **3**

 Bedrooms: **2**

# Apartment - For Rent - Sliema

SLIEMA - A bright and spacious apartment, measuring around 85SqM, situated on the fourth floor of a brand new block, just off the Sliema ferries, and within walking distance to shopping malls, bus and ferry services, restaurants, cafes and other amenities. Layout is in the form of a kitchen/living/dining, two double bedrooms (main with an en-suite shower), and a guest shower room. Complimenting this property is a spacious front balcony overlooking the street, and lovely views of the Sliema Creek from the master bedroom and the living area. It is being offered fully furnished and equipped with all necessary appliances, fully air-conditioned and thermally insulated. Not to be missed!

## Features

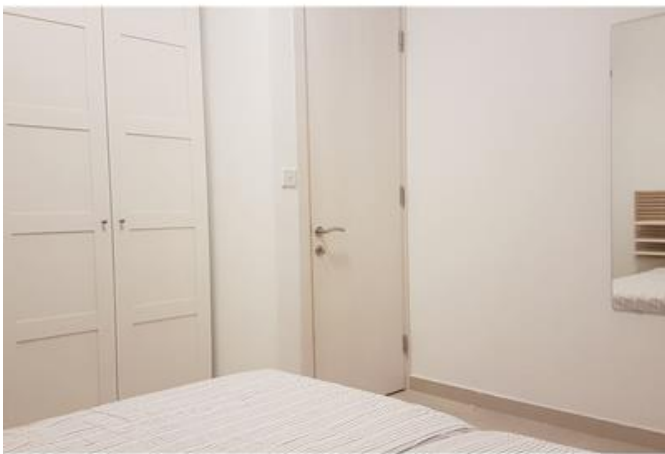
- ✓ En Suite
- ✓ Balcony
- ✓ Pool

## Rooms

- ✓ Double Bedroom : 0 x 0 m (0 m2)
- ✓ Kitchen/Living/Dining : 0 x 0 m (0 m2)
- ✓ Double Bedroom : 0 x 0 m (0 m2)
- ✓ Bathroom : 0 x 0 m (0 m2)
- ✓ Bathroom : 0 x 0 m (0 m2)
- ✓ Bathroom : 0 x 0 m (0 m2)

# Gallery







**Lorraine Bonnici**

RE/MAX Elite - Sliema

M: 99236121

E: [lorraine@remax.com.mt](mailto:lorraine@remax.com.mt)

T: 21344204

**RE/MAX Elite - Sliema**

241, Tower Road, Sliema, Malta