

Penthouse in Sliema



Sliema, Sliema and St Julians Surroundings



€7,500

Reference No: 240511012-193

 Total Rooms: **8**

 Floor Area (m²) : **0**

 Bathrooms: **4**

 Bedrooms: **3**

Penthouse - For Rent - Sliema

PENTHOUSE - SLIEMA 3 bedroom luxury PENTHOUSE enjoying stunning sea views and plenty of natural daylight. Comprises a very large and bright living dining kitchen with a huge wrap around sea view terrace. Three bedrooms and each bedroom has its own ensuite. Plus a guest bathroom and laundry. There is also a rooftop pool and a car garage included. Internal area 176.8sqm , terrace 106.1sqm (excluding roof)

Features

- ✓ Lift
- ✓ Ceramic Floor
- ✓ Entrance Hall
- ✓ Towel Warmers
- ✓ Skirting
- ✓ Service Lift
- ✓ Pool
- ✓ Roof Terrace
- ✓ Kitchen/Dinette
- ✓ En Suite
- ✓ Soffit Ceilings
- ✓ A/C
- ✓ Passenger Lift
- ✓ Double Glazed
- ✓ Balcony

Rooms

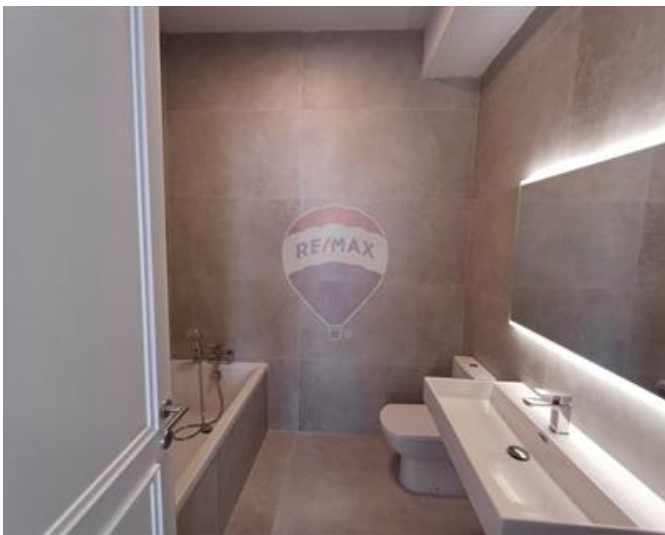
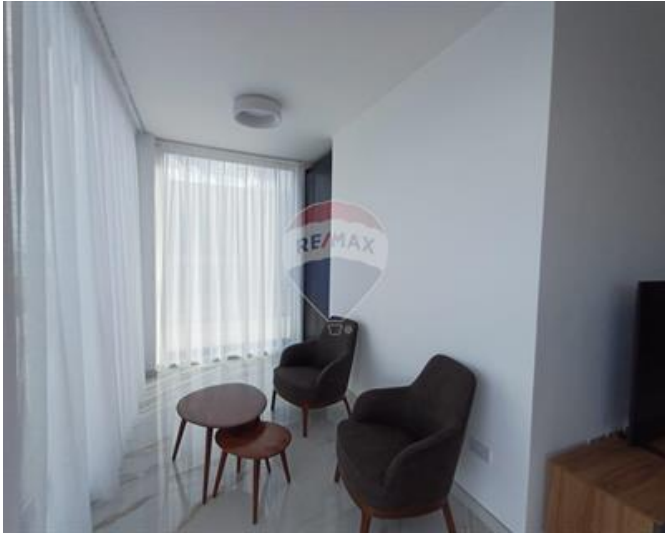
- ✓ Kitchen/Living/Dining : 0 x 0 m (0 m2)
- ✓ Double Bedroom : 0 x 0 m (0 m2)
- ✓ Shower Ensuite : 0 x 0 m (0 m2)
- ✓ Double Bedroom : 0 x 0 m (0 m2)
- ✓ Shower Ensuite : 0 x 0 m (0 m2)
- ✓ Double Bedroom : 0 x 0 m (0 m2)
- ✓ Shower Ensuite : 0 x 0 m (0 m2)
- ✓ Bathroom : 0 x 0 m (0 m2)

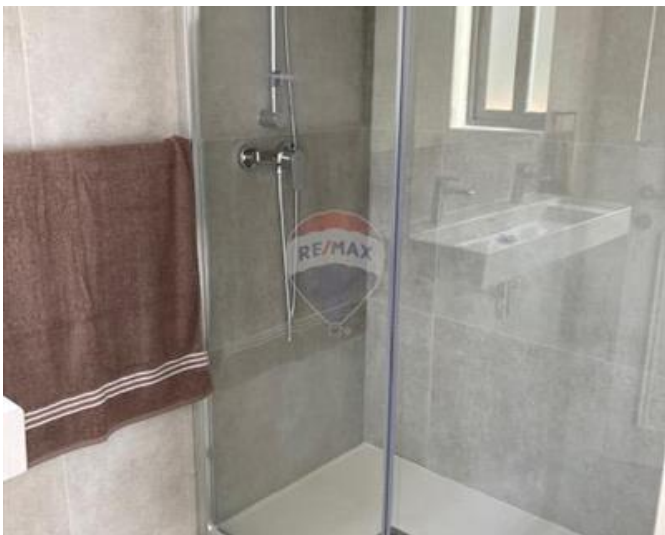
Gallery















Wendy Jane Sanger

RE/MAX Elite - Sliema

M: 77473602

E: wendys@remax.com.mt

T: 21344204

RE/MAX Elite - Sliema

241, Tower Road, Sliema, Malta