

Villa Semi-detached in Kappara



Kappara, Sliema and St Julians Surroundings



€2,650

Reference No: 240511009-86

 Total Rooms: **10**

 Floor Area (m²) : **0**

 Bathrooms: **3**

 Bedrooms: **3**

Villa Semi-detached - For Rent - Kappara

KAPPARA - Newly refurbished corner semi-detached villa. Accommodation consists of an entrance hall, a living area which includes a 50inch LED TV, an air-conditioned kitchen/dining with a breakfast area, gas hob, electric oven, dishwasher, etc; a guest toilet, two double bedrooms (main with an en-suite), a single bedroom with bunk beds, a guest bathroom, a storage room, a washroom with a washing machine, use of roof, and front and back yards. Property also includes a one car garage, and a large car port. Well worth viewing!

Features

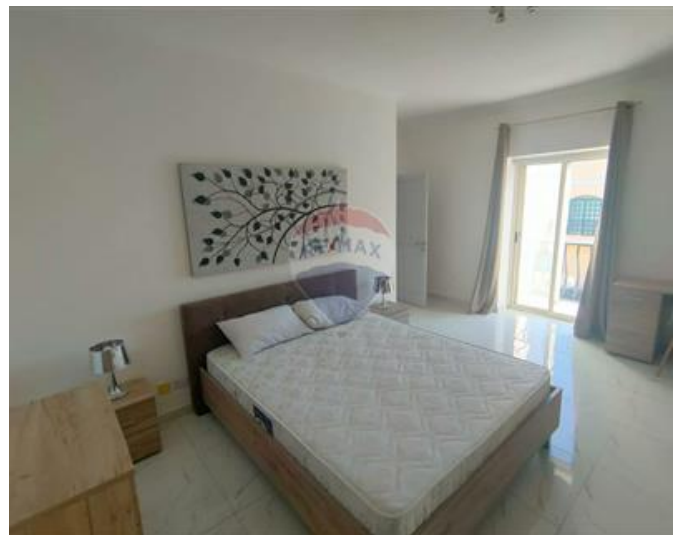
- ✓ Kitchen/Dinette
- ✓ A/C
- ✓ Back Yard
- ✓ En Suite
- ✓ Yard
- ✓ Roof Terrace

Rooms

- ✓ Double Bedroom : 0 x 0 m (0 m2)
- ✓ Double Bedroom : 0 x 0 m (0 m2)
- ✓ Bathroom : 0 x 0 m (0 m2)
- ✓ Bathroom Ensuite : 0 x 0 m (0 m2)
- ✓ Living : 0 x 0 m (0 m2)
- ✓ Box Room : 0 x 0 m (0 m2)
- ✓ Laundry : 0 x 0 m (0 m2)
- ✓ Single Bedroom : 0 x 0 m (0 m2)
- ✓ Kitchen/Dining : 0 x 0 m (0 m2)
- ✓ Guest Toilet : 0 x 0 m (0 m2)

Gallery









Marina Vella Rapa
RE/MAX Elite - Sliema

M: 79735135

E: mvellarapa@remax.com.mt

T: 21344024

RE/MAX Elite - Sliema

241, Tower Road, Sliema, Malta