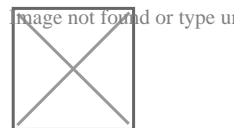


Penthouse in San Pawl tat Targa





San Pawl tat Targa, Central



€2,200

Reference No: 240511009-816

 Total Rooms: **5**

 Floor Area (m²) : **0**

 Bathrooms: **2**

 Bedrooms: **2**

Penthouse - For Rent - San Pawl tat Targa

San Pawl Ta' Targa – Modern 2-Bedroom Penthouse with Country Views. Located in a quiet and desirable area, this modern 2-bedroom, 1-bathroom Penthouse offers a stylish and comfortable living space. The open layout is filled with natural light and designed with contemporary finishes throughout. Enjoy peaceful country views, making this property ideal for those seeking a tranquil yet well-connected home.

Features

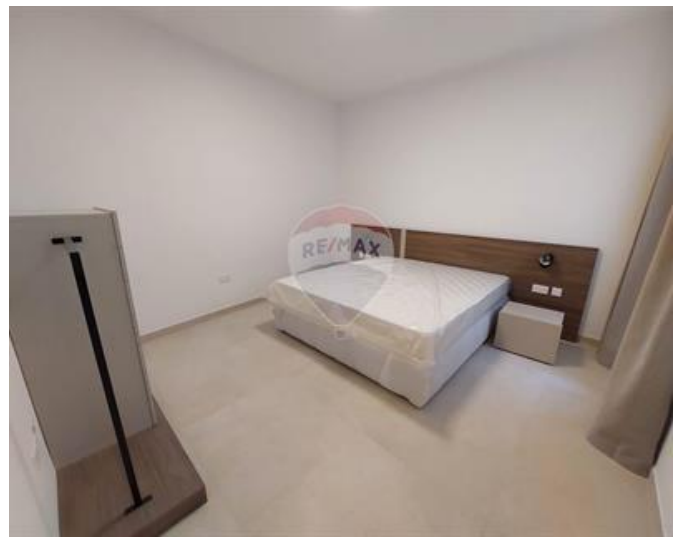
- ✓ Kitchen/Dinette
- ✓ Soffit Ceilings
- ✓ Skirting
- ✓ Back Yard
- ✓ Ceramic Floor
- ✓ A/C
- ✓ Double Glazed

Rooms

- ✓ Kitchen/Living/Dining : 0 x 0 m (0 m2)
- ✓ Double Bedroom : 0 x 0 m (0 m2)
- ✓ Double Bedroom : 0 x 0 m (0 m2)
- ✓ Bathroom : 0 x 0 m (0 m2)
- ✓ Bathroom Ensuite : 0 x 0 m (0 m2)

Gallery











Marina Vella Rapa
RE/MAX Elite - Sliema

M: 79735135
E: mvellarapa@remax.com.mt
T: 21344024

RE/MAX Elite - Sliema
241, Tower Road, Sliema, Malta