

# Apartment in San Pawl tat Targa



**San Pawl tat Targa, Central**



**€1,900**

Reference No: 240511009-805

 Total Rooms: **6**

 Floor Area (m<sup>2</sup>): **0**

 Bathrooms: **2**

 Bedrooms: **3**

# Apartment - For Rent - San Pawl tat Targa

San Pawl Ta' Targa – Modern 3-Bedroom Apartment with Country Views. Set in a sought-after residential area, this modern 3-bedroom, 2-bathroom apartment offers a spacious and comfortable layout. The property includes a master bedroom with en-suite, two additional well-sized bedrooms, and a bright open-plan kitchen, living, and dining area. Enjoy serene country views, making this an ideal home for those looking for a peaceful setting with modern finishes and convenience.

## Features

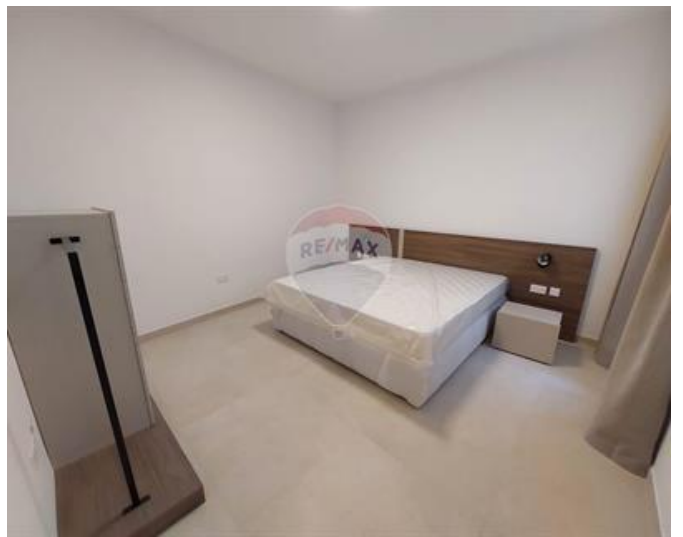
- ✓ Kitchen/Dinette
- ✓ Soffit Ceilings
- ✓ Skirting
- ✓ Back Yard
- ✓ Ceramic Floor
- ✓ A/C
- ✓ Double Glazed

## Rooms

- ✓ Kitchen/Living/Dining : 0 x 0 m (0 m2)
- ✓ Double Bedroom : 0 x 0 m (0 m2)
- ✓ Double Bedroom : 0 x 0 m (0 m2)
- ✓ Bathroom : 0 x 0 m (0 m2)
- ✓ Double Bedroom : 0 x 0 m (0 m2)
- ✓ Shower Ensuite : 0 x 0 m (0 m2)

# Gallery











**Marina Vella Rapa**

RE/MAX Elite - Sliema

M: 79735135

E: [mvellarapa@remax.com.mt](mailto:mvellarapa@remax.com.mt)

T: 21344024

**RE/MAX Elite - Sliema**

241, Tower Road, Sliema, Malta