

Apartment in Sliema



Sliema, Sliema and St Julians Surroundings



€3,000

Reference No: 240511009-690

 Total Rooms: 6

 Floor Area (m²) : 0

 Bathrooms: 2

 Bedrooms: 3

Apartment - For Rent - Sliema

Sliema - beautiful double fronted apartment , enjoying Direct sea views of Valletta , Manuel Island and Sliema coast line . This property comprises of the kitchen/dining/living area enjoying sea views, three spacious bedrooms and two bathrooms one of which is en suite . All rooms are fully air conditioned / heated with brand new units . The property is situated right on the promenade, close to shops, restaurants, cafes, tigne point shopping mall and other amenities.

Features

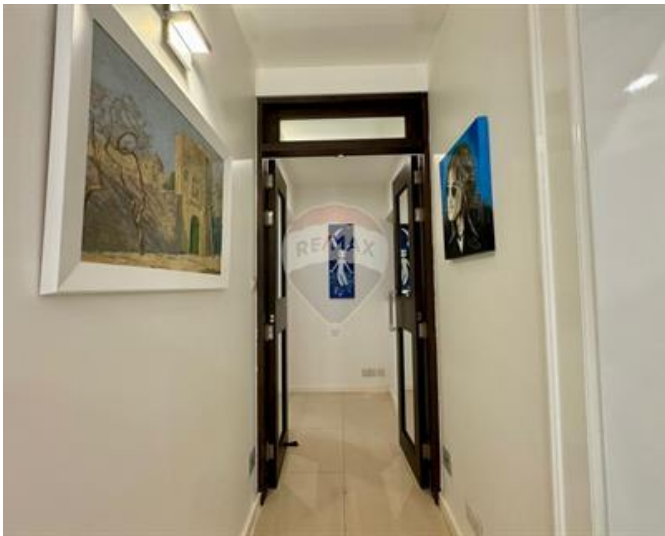
- ✓ Lift
- ✓ Ceramic Floor
- ✓ Soffit Ceilings
- ✓ Skirting
- ✓ Service Lift
- ✓ Balcony
- ✓ Kitchen/Dinette
- ✓ En Suite
- ✓ A/C
- ✓ Passenger Lift
- ✓ Double Glazed

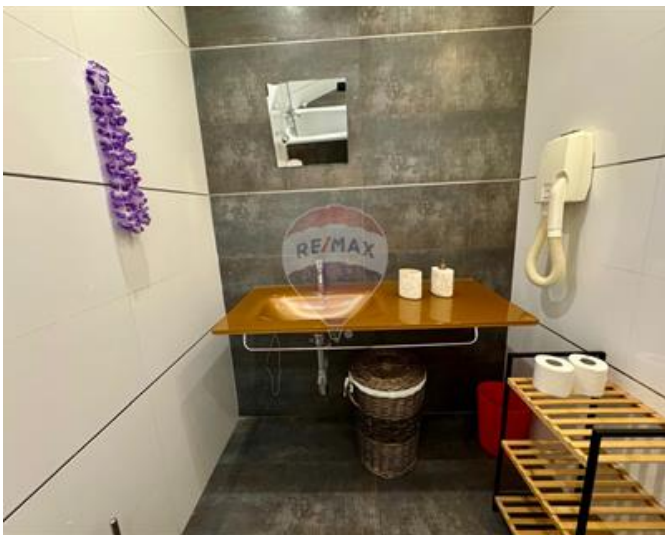
Rooms

- ✓ Kitchen/Living/Dining : 0 x 0 m (0 m2)
- ✓ Double Bedroom : 0 x 0 m (0 m2)
- ✓ Double Bedroom : 0 x 0 m (0 m2)
- ✓ Double Bedroom : 0 x 0 m (0 m2)
- ✓ Bathroom : 0 x 0 m (0 m2)
- ✓ Shower Ensuite : 0 x 0 m (0 m2)

Gallery











Marina Vella Rapa

RE/MAX Elite - Sliema

M: 79735135

E: mvellarapa@remax.com.mt

T: 21344024

RE/MAX Elite - Sliema

241, Tower Road, Sliema, Malta