

Penthouse in Sliema



Sliema, Sliema and St Julians Surroundings



€11,500

Reference No: 240511009-522

 Total Rooms: **8**

 Floor Area (m²): **0**

 Bathrooms: **4**

 Bedrooms: **3**

Penthouse - For Rent - Sliema

Sliema - Stunning penthouse newly listed, boasting breathtaking sea views from a vast terrace overlooking St Julians Bay. This exceptional property features a spacious open plan living/dining area, a fully equipped kitchen with high-end SMEG appliances, three double bedrooms including a lavish master with en-suite bathroom (featuring a double back bath and shower for 2), and a guest toilet. The external space offers an expansive balcony with outdoor furniture, a Jacuzzi for 4/5 people, and a built-in barbeque, perfect for entertaining. Additional luxuries include parquet flooring, a surround sound system, and modern gadgets like a reverse osmosis drinking water system. Situated on the promenade, residents will be moments away from shops, restaurants, and the beach. Don't miss this opportunity to own a unique property in a prime location, designed to the highest standards."

Features

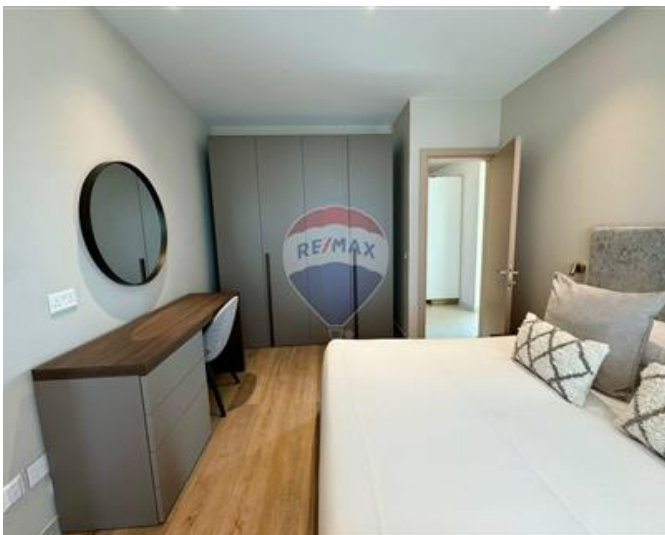
- ✓ Lift
- ✓ En Suite
- ✓ A/C
- ✓ Terrace
- ✓ Kitchen/Dinette
- ✓ Soffit Ceilings
- ✓ Skirting

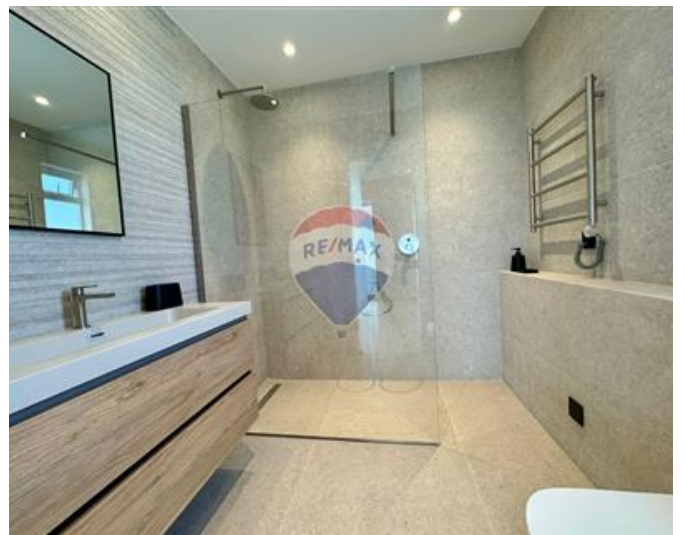
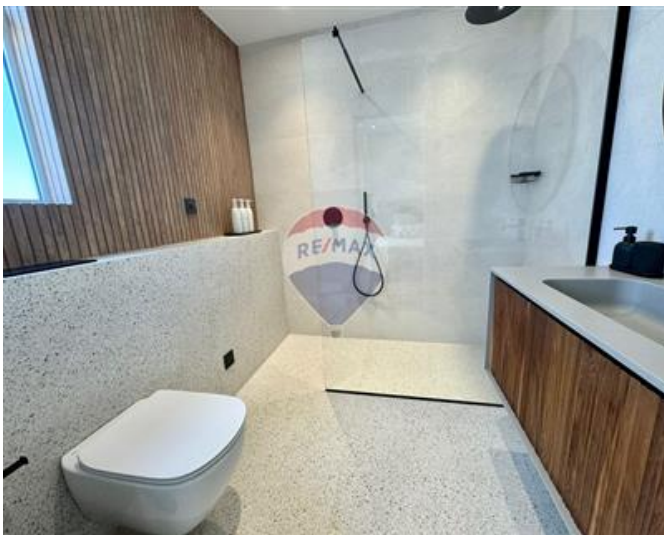
Rooms

- ✓ Kitchen/Living/Dining : 0 x 0 m (0 m2)
- ✓ Double Bedroom : 0 x 0 m (0 m2)
- ✓ Double Bedroom : 0 x 0 m (0 m2)
- ✓ Double Bedroom : 0 x 0 m (0 m2)
- ✓ Bathroom : 0 x 0 m (0 m2)
- ✓ Shower Ensuite : 0 x 0 m (0 m2)
- ✓ Shower Ensuite : 0 x 0 m (0 m2)
- ✓ Shower Ensuite : 0 x 0 m (0 m2)

Gallery











Marina Vella Rapa

RE/MAX Elite - Sliema

M: 79735135

E: mvellarapa@remax.com.mt

T: 21344024

RE/MAX Elite - Sliema

241, Tower Road, Sliema, Malta