

Townhouse in Sliema



Sliema, Sliema and St Julians Surroundings



€2,500

Reference No: 240511009-31

 Total Rooms: **9**

 Floor Area (m²): **0**

 Bathrooms: **3**

 Bedrooms: **4**

Townhouse - For Rent - Sliema

SLIEMA - Located in the center and close to many amenities, is this recently renovated corner Townhouse, enjoying an elegant and modern style, yet retaining its authentic character, making it a beautiful family home. Layout at ground floor level is in the form of a large open plan kitchen / dining / living area and a guest toilet room. On the first floor one finds two very spacious bedrooms, all equipped with air-conditioning and enjoying high ceilings and a large bathroom. On the second floor the third double bedroom is situated as well as bathroom and an additional kitchen / dining leading on to a spacious terrace perfect for entertaining outdoors. On the top floor the fourth bedroom is situated which enjoys a beautiful terrace with a distant sea view. Property is being offered fully furnished and fully equipped with all amenities. This charming townhouse is complemented with an interconnected garage. Must be seen to be appreciated!

Features

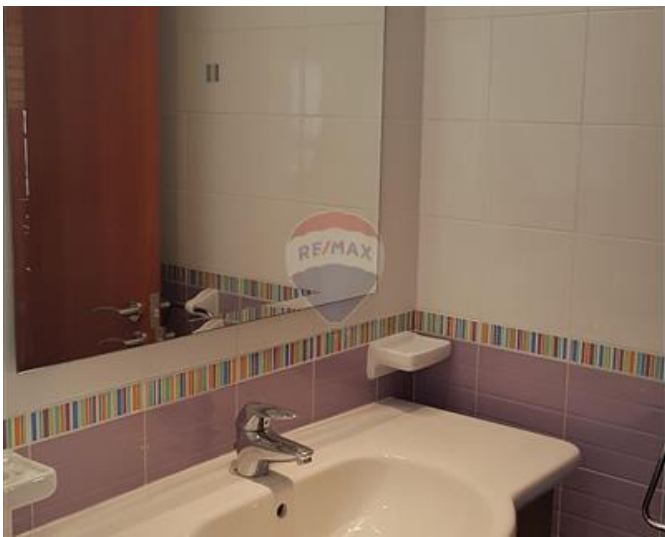
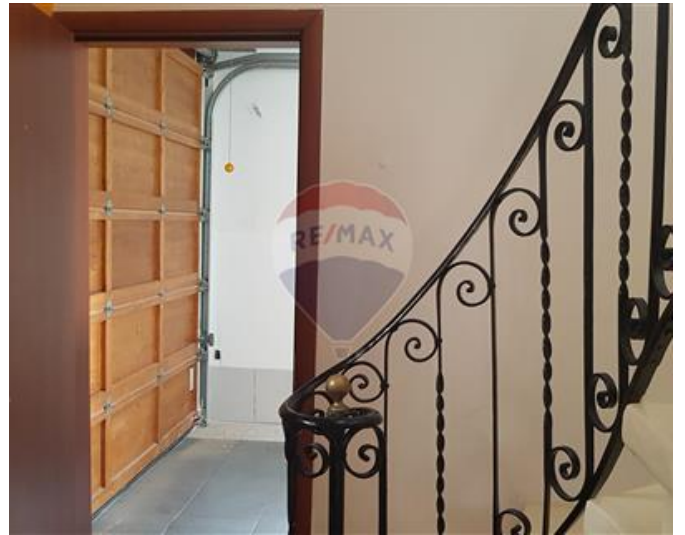
- ✓ En Suite
- ✓ A/C
- ✓ Entrance Hall
- ✓ Terrace

Rooms

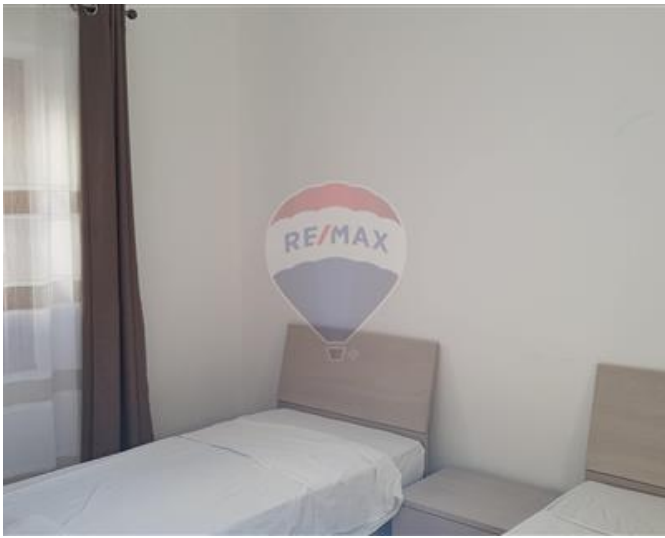
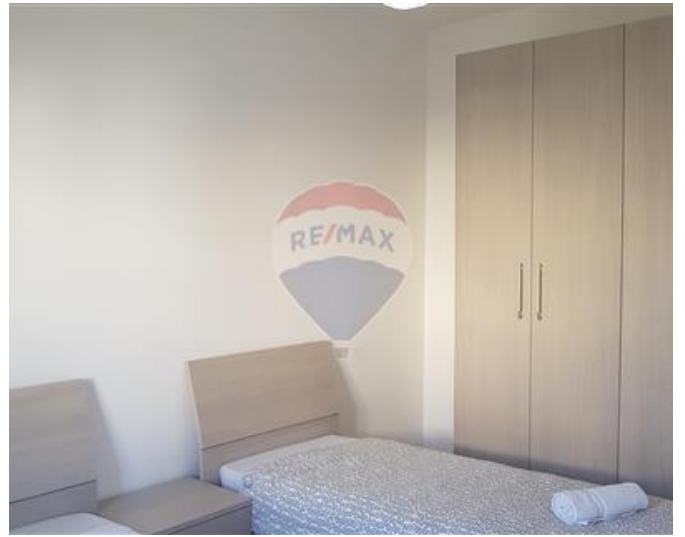
- ✓ Kitchen/Living/Dining : 0 x 0 m (0 m2)
- ✓ Double Bedroom : 0 x 0 m (0 m2)
- ✓ Double Bedroom : 0 x 0 m (0 m2)
- ✓ Double Bedroom : 0 x 0 m (0 m2)
- ✓ Double Bedroom : 0 x 0 m (0 m2)
- ✓ Kitchen/Dining : 0 x 0 m (0 m2)
- ✓ Bathroom : 0 x 0 m (0 m2)
- ✓ Shower : 0 x 0 m (0 m2)
- ✓ Shower : 0 x 0 m (0 m2)

Gallery















Marina Vella Rapa
RE/MAX Elite - Sliema

M: 79735135
E: mvellarapa@remax.com.mt
T: 21344024

RE/MAX Elite - Sliema
241, Tower Road, Sliema, Malta