

Townhouse in Sliema



Sliema, Sliema and St Julians Surroundings



€4,500

Reference No: 240511009-135

 Total Rooms: **9**

 Floor Area (m²): **0**

 Bathrooms: **4**

 Bedrooms: **3**

Townhouse - For Rent - Sliema

TIGNE POINT - A luxurious townhouse, situated in the heart of this prestigious complex, close to all amenities. Layout at ground floor level is in the form of a kitchen/living/dining, which leads onto a terrace, ideal for entertaining; and a guest toilet room. On the first floor, one finds three double bedrooms all with an en-suite, and the main enjoying a walk-in wardrobe. Complimenting this property is a roof terrace. Property is being offered fully furnished, equipped and ready to move into. A car space is also included. Not to be missed!

Features

- ✓ Kitchen/Dinette
- ✓ En Suite
- ✓ Entrance Hall
- ✓ A/C
- ✓ Wi-Fi
- ✓ Terrace
- ✓ Ceramic Floor
- ✓ Walk in Wardrobe
- ✓ Gypsum Plastering
- ✓ Skirting
- ✓ Double Glazed
- ✓ Roof Terrace

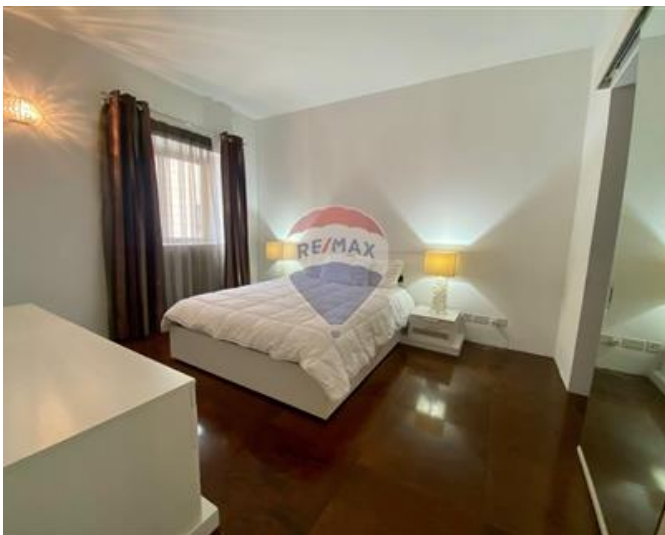
Rooms

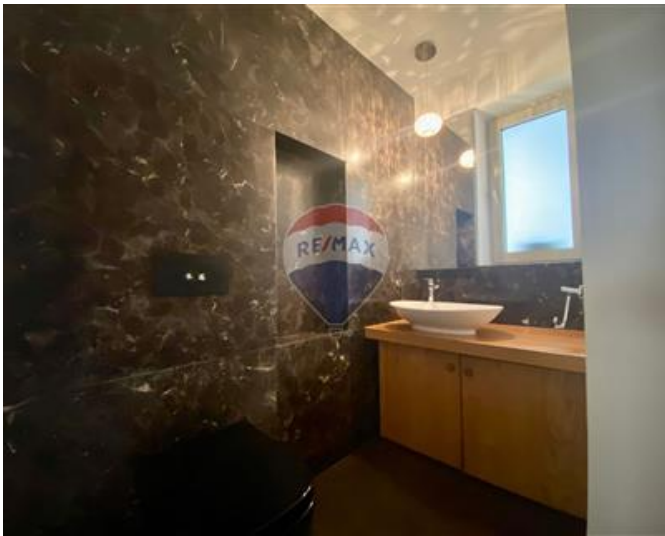
- ✓ Kitchen/Living/Dining : 0 x 0 m (0 m2)
- ✓ Guest Toilet : 0 x 0 m (0 m2)
- ✓ Double Bedroom : 0 x 0 m (0 m2)
- ✓ Bathroom Ensuite : 0 x 0 m (0 m2)
- ✓ Walk In Wardrobe : 0 x 0 m (0 m2)
- ✓ Double Bedroom : 0 x 0 m (0 m2)
- ✓ Bathroom Ensuite : 0 x 0 m (0 m2)
- ✓ Double Bedroom : 0 x 0 m (0 m2)
- ✓ Shower Ensuite : 0 x 0 m (0 m2)

Gallery











Marina Vella Rapa
RE/MAX Elite - Sliema

M: 79735135
E: mvellarapa@remax.com.mt
T: 21344024

RE/MAX Elite - Sliema
241, Tower Road, Sliema, Malta