

# Penthouse in Swieqi



Swieqi, Sliema and St Julians Surroundings



€1,700

Reference No: 240511004-99

 Total Rooms: 5

 Floor Area (m<sup>2</sup>) : 0

 Bathrooms: 2

 Bedrooms: 2

# Penthouse - For Rent - Swieqi

SWIEQI - Brand new PENTHOUSE situated in a quiet area, yet close to all amenities. The property comprises a modern, stunning bright open plan kitchen/living/dining area, which leads onto a spacious terrace enjoying open views . Two double bedrooms (main with en-suite) and a guest bathroom, all the bedrooms have a balcony enjoying plenty of natural light. The Property is fully furnished, equipped and air-conditioned throughout. MUST BE SEEN

## Features

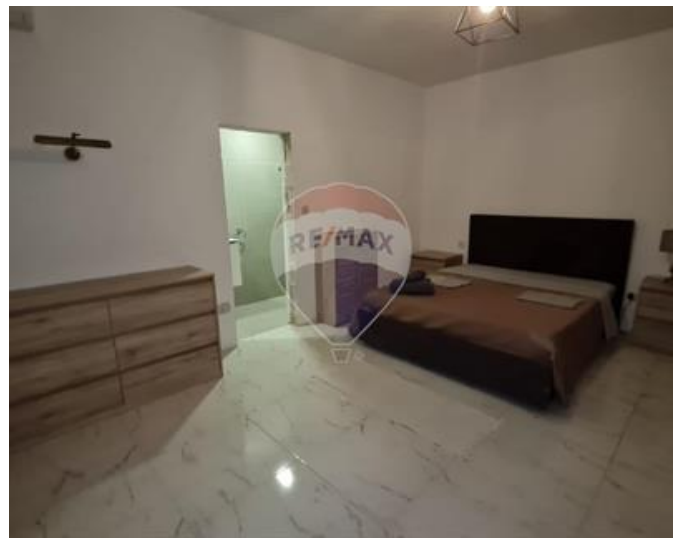
- ✓ Lift
- ✓ Ceramic Floor
- ✓ Soffit Ceilings
- ✓ Skirting
- ✓ Double Glazed
- ✓ Kitchen/Dinette
- ✓ En Suite
- ✓ A/C
- ✓ Passenger Lift
- ✓ Terrace

## Rooms

- ✓ Kitchen/Living/Dining : 0 x 0 m (0 m2)
- ✓ Double Bedroom : 0 x 0 m (0 m2)
- ✓ Double Bedroom : 0 x 0 m (0 m2)
- ✓ Shower Ensuite : 0 x 0 m (0 m2)
- ✓ Bathroom : 0 x 0 m (0 m2)

# Gallery







**Luana Borg**

RE/MAX Elite - Sliema

M: 79212068

E: [luanab@remax.com.mt](mailto:luanab@remax.com.mt)

T: 21344204

**RE/MAX Elite - Sliema**

241, Tower Road, Sliema, Malta