

Apartment in Swieqi



Swieqi, Sliema and St Julians Surroundings



€2,700

Reference No: 240511004-250

 Total Rooms: **7**

 Floor Area (m²) : **0**

 Bathrooms: **2**

 Bedrooms: **3**

Apartment - For Rent - Swieqi

SWIEQI - Tastefully finished and furnished apartment, located in a quiet residential area, overlooking a valley. Offering a spacious layout and enjoying plenty of natural light, this property comprises of an open plan kitchen / living / dining area, leading onto a sizeable front terrace, which is ideal for entertaining and where one can enjoy lovely open views. Three double bedrooms, two bathrooms (one en suite) and storage / laundry room. This property would make a lovely home, viewings are highly recommended. Optional underlying car space.

Features

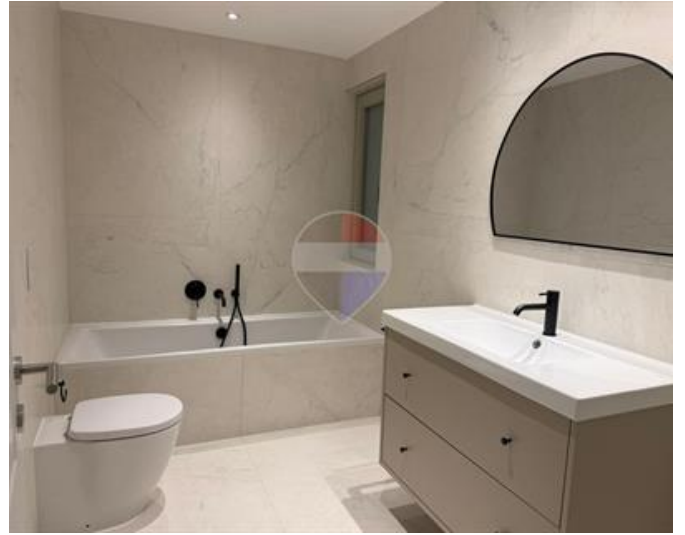
- ✓ Lift
- ✓ Ceramic Floor
- ✓ Soffit Ceilings
- ✓ Skirting
- ✓ Terrace
- ✓ Kitchen/Dinette
- ✓ En Suite
- ✓ A/C
- ✓ Double Glazed

Rooms

- ✓ Kitchen/Living/Dining : 0 x 0 m (0 m2)
- ✓ Double Bedroom : 0 x 0 m (0 m2)
- ✓ Double Bedroom : 0 x 0 m (0 m2)
- ✓ Double Bedroom : 0 x 0 m (0 m2)
- ✓ Bathroom : 0 x 0 m (0 m2)
- ✓ Shower Ensuite : 0 x 0 m (0 m2)
- ✓ Laundry : 0 x 0 m (0 m2)

Gallery







Luana Borg

RE/MAX Elite - Sliema

M: 79212068

E: luanab@remax.com.mt

T: 21344204

RE/MAX Elite - Sliema

241, Tower Road, Sliema, Malta