

# Townhouse in Sliema



**Sliema, Sliema and St Julians Surroundings**



**€2,500**

Reference No: 240511004-248

 Total Rooms: **9**

 Floor Area (m<sup>2</sup>) : **0**

 Bathrooms: **3**

 Bedrooms: **2**

# Townhouse - For Rent - Sliema

Sliema - Newly refurbished and full of character, this charming townhouse is ideally located close to all amenities and just a short walk from the Sliema seafront. Beautifully blending modern comforts with original Maltese features, the property is bright, spacious, and thoughtfully designed throughout. The ground floor welcomes you into a cosy living room leading onto a fully equipped open-plan kitchen and dining area, together with a bathroom with shower and ample storage space. The home further opens onto a lovely front terrace and private garden with citrus trees, creating the perfect setting for outdoor lunches, BBQs, or relaxing evenings. Upstairs, the property features two double bedrooms, both with en-suite facilities, connected by an original staircase and enhanced by a skylight that fills the home with natural light. One bedroom enjoys a terrace overlooking the garden, while the other features a traditional Maltese balcony, adding further charm and authenticity to this peaceful home, ideal for comfortable everyday living.

## Features

- ✓ Kitchen/Dinette
- ✓ En Suite
- ✓ Soffit Ceilings
- ✓ Skirting
- ✓ Double Glazed
- ✓ Garden
- ✓ Ceramic Floor
- ✓ Entrance Hall
- ✓ A/C
- ✓ Intelligent Lighting
- ✓ Terrace

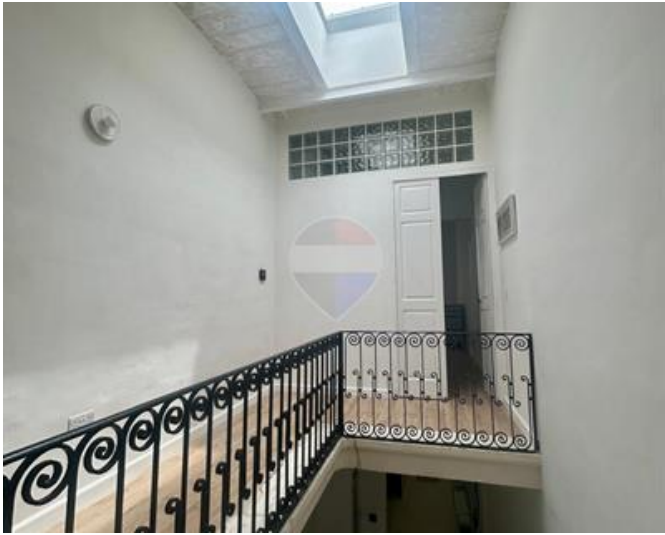
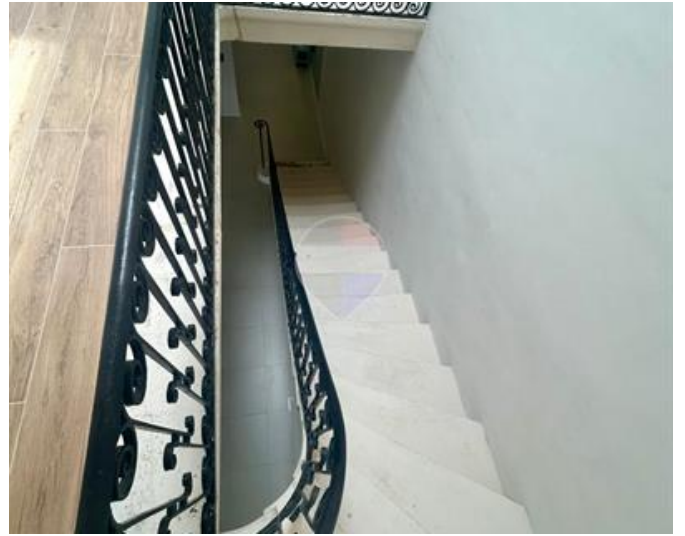
## Rooms

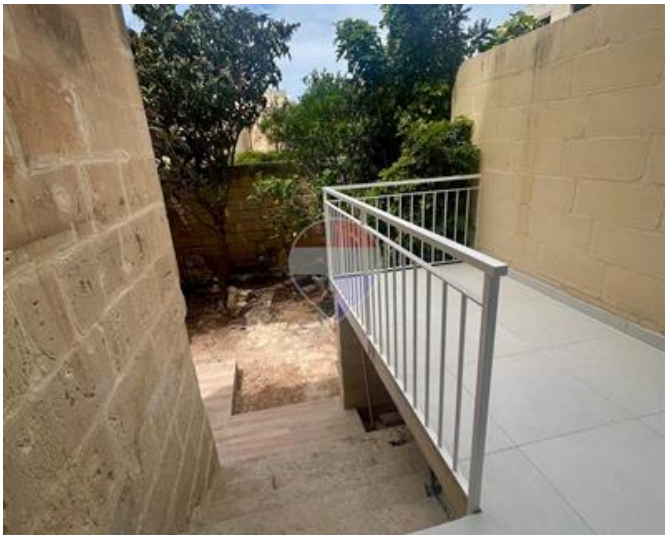
- ✓ Kitchen : 0 x 0 m (0 m2)
- ✓ Living/Dining : 0 x 0 m (0 m2)
- ✓ Shower : 0 x 0 m (0 m2)
- ✓ Laundry : 0 x 0 m (0 m2)
- ✓ Workshop : 0 x 0 m (0 m2)
- ✓ Double Bedroom : 0 x 0 m (0 m2)
- ✓ Shower Ensuite : 0 x 0 m (0 m2)
- ✓ Double Bedroom : 0 x 0 m (0 m2)

✓ Shower Ensuite : 0 x 0 m (0 m2)

# Gallery













**Luana Borg**

RE/MAX Elite - Sliema

M: 79212068

E: [luanab@remax.com.mt](mailto:luanab@remax.com.mt)

T: 21344204

**RE/MAX Elite - Sliema**

241, Tower Road, Sliema, Malta