

# Apartment in Sliema



**Sliema, Sliema and St Julians Surroundings**



**€11,000**

Reference No: 240511004-211

 Total Rooms: 7

 Floor Area (m<sup>2</sup>) : 0

 Bathrooms: 2

 Bedrooms: 2

# Apartment - For Rent - Sliema

Sliema - This exceptional, brand-new seafront apartment is located in one of the most sought-after areas of Sliema, set within a prestigious luxury complex offering exclusive amenities including a swimming pool, gym, and communal facilities. The apartment enjoys unobstructed panoramic views of Valletta, Manoel Island, and the Marsamxett Harbour and is finished to premium standards throughout. It comprises two spacious bedrooms with ensuite bathrooms, a large seafront terrace, and a third versatile room ideal as an additional bedroom or study. Additional features include a separate bar/lounge area, laundry and utility room, and an internal terrace, combining elegance with practicality. Fully furnished and ready to move into. Parking available on request.

## Features

- ✓ Lift
- ✓ Ceramic Floor
- ✓ Entrance Hall
- ✓ Skirting
- ✓ Double Glazed
- ✓ Kitchen/Dinette
- ✓ En Suite
- ✓ Soffit Ceilings
- ✓ Passenger Lift
- ✓ Terrace

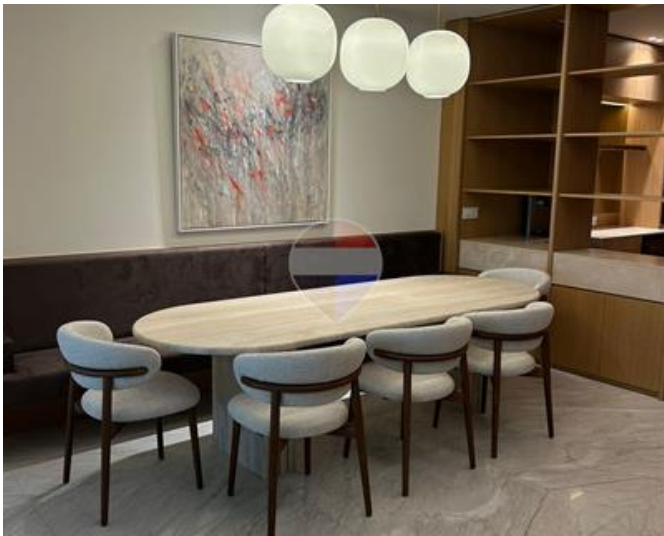
## Rooms

- ✓ Kitchen/Living/Dining : 0 x 0 m (0 m2)
- ✓ Double Bedroom : 0 x 0 m (0 m2)
- ✓ Bathroom Ensuite : 0 x 0 m (0 m2)
- ✓ Double Bedroom : 0 x 0 m (0 m2)
- ✓ Bathroom Ensuite : 0 x 0 m (0 m2)
- ✓ Laundry : 0 x 0 m (0 m2)
- ✓ Office / Study : 0 x 0 m (0 m2)

# Gallery









**Luana Borg**

RE/MAX Elite - Sliema

M: 79212068

E: [luanab@remax.com.mt](mailto:luanab@remax.com.mt)

T: 21344204

**RE/MAX Elite - Sliema**

241, Tower Road, Sliema, Malta