

Villa Detached in Swieqi



Swieqi, Sliema and St Julians Surroundings



€21,950

Reference No: 240511004-205

 Total Rooms: **25**

 Floor Area (m²) : **4000**

 Bathrooms: **7**

 Bedrooms: **8**

Villa Detached - For Rent - Swieqi

Victoria Gardens - This impressive fully detached residence, comprising two interconnecting villas, is located within the prestigious Victoria Gardens community and offers an exceptional level of space, luxury, and privacy. The property features eight generously sized bedrooms and eight elegant bathrooms, complemented by two fully equipped main kitchens and two additional kitchenettes on the first floor, providing added convenience and flexibility for family living or staff use. Designed for both comfort and entertaining, the home offers two expansive living areas, a large garage, and seamless flow between indoor and outdoor spaces. Set on an expansive plot, the villa is surrounded by lush landscaped gardens, enhanced by a tranquil ornamental pond and a large private swimming pool, creating a serene and exclusive environment. With approximately 2,500 sqm of internal living space on a 1,500 sqm plot, this unique property presents a rare opportunity for large families or corporate tenants seeking a prestigious, private residence in one of Victoria Gardens' most desirable locations.

Features

- ✓ Kitchen/Dinette
- ✓ En Suite
- ✓ Entrance Hall
- ✓ Soffit Ceilings
- ✓ Towel Warmers
- ✓ Skirting
- ✓ Server Room
- ✓ Reverse Osmosis
- ✓ Terrace
- ✓ Court Yard
- ✓ Deck
- ✓ Roof Terrace
- ✓ Front Patio
- ✓ Solar Panels
- ✓ Waste Room
- ✓ CCTV
- ✓ Ceramic Floor
- ✓ Walk in Wardrobe
- ✓ Water Utility
- ✓ Gypsum Plastering
- ✓ A/C
- ✓ Fire Safety
- ✓ Double Glazed
- ✓ Pool
- ✓ Yard
- ✓ Balcony
- ✓ Back Yard
- ✓ Garden
- ✓ Video Intercom
- ✓ Solar Water Heating
- ✓ Loading Bay
- ✓ Alarm System

- ✓ Generators

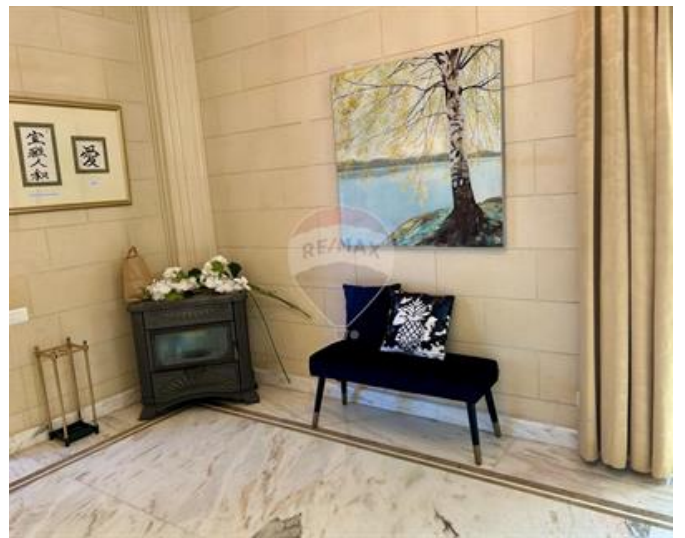
Rooms

- ✓ Kitchen : 0 x 0 m (0 m2)
- ✓ Double Bedroom : 0 x 0 m (0 m2)
- ✓ Double Bedroom : 0 x 0 m (0 m2)
- ✓ Double Bedroom : 0 x 0 m (0 m2)
- ✓ Double Bedroom : 0 x 0 m (0 m2)
- ✓ Double Bedroom : 0 x 0 m (0 m2)
- ✓ Double Bedroom : 0 x 0 m (0 m2)
- ✓ Double Bedroom : 0 x 0 m (0 m2)
- ✓ Double Bedroom : 0 x 0 m (0 m2)
- ✓ Shower Ensuite : 0 x 0 m (0 m2)
- ✓ Shower Ensuite : 0 x 0 m (0 m2)
- ✓ Shower Ensuite : 0 x 0 m (0 m2)
- ✓ Shower Ensuite : 0 x 0 m (0 m2)
- ✓ Shower Ensuite : 0 x 0 m (0 m2)
- ✓ Shower Ensuite : 0 x 0 m (0 m2)
- ✓ Bathroom : 0 x 0 m (0 m2)
- ✓ Kitchen : 0 x 0 m (0 m2)
- ✓ Kitchen : 0 x 0 m (0 m2)
- ✓ Kitchen : 0 x 0 m (0 m2)
- ✓ Living/Dining : 0 x 0 m (0 m2)
- ✓ Living/Dining : 0 x 0 m (0 m2)
- ✓ Walk In Wardrobe : 0 x 0 m (0 m2)
- ✓ Walk In Wardrobe : 0 x 0 m (0 m2)
- ✓ Laundry : 0 x 0 m (0 m2)
- ✓ Laundry : 0 x 0 m (0 m2)

Gallery















Luana Borg

RE/MAX Elite - Sliema

M: 79212068

E: luanab@remax.com.mt

T: 21344204

RE/MAX Elite - Sliema

241, Tower Road, Sliema, Malta