

Penthouse Duplex in Naxxar



Naxxar, Central



€2,650

Reference No: 240511004-104

 Total Rooms: **7**

 Floor Area (m²) : **0**

 Bathrooms: **3**

 Bedrooms: **3**

Penthouse Duplex - For Rent - Naxxar

San Pawl Tat Targa - A modern and bright Duplex Penthouse situated in this sought after, quiet villa area yet close to all amenities. The top floor consists of an open plan kitchen, living, dining leading on to 2 terraces on either side having country views and also distant sea views. Kitchen is fully equipped having an American fridge/freezer and 2 ovens and a wine cooler for added practicality. A guest toilet and utility room are also found on this floor and also a gas burning fireplace and a large plasma TV in the living area. A wooden staircase leads to the lower level where one finds the main bedroom having an en-suite, walk-in wardrobe, large plasma TV and a balcony, another 2 double bedrooms are found on this level together with a soundproof study / office and a main bathroom. This property also comes with solar panels and both floors can be accessed by a lift. A unique property which needs to be viewed to be appreciated.

Features

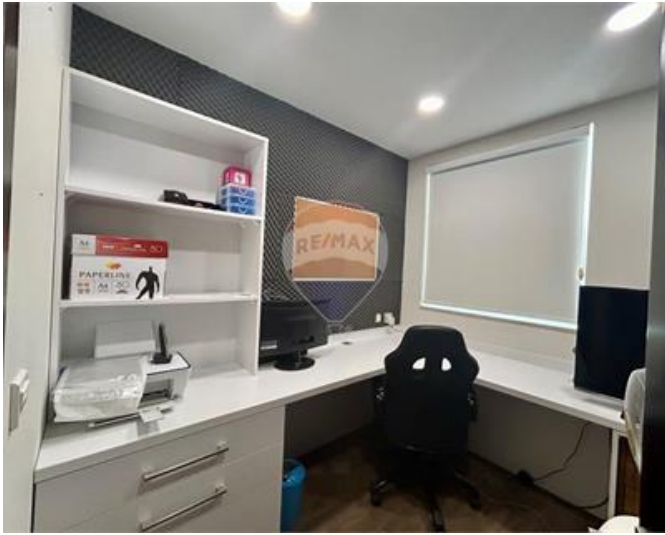
- ✓ Lift
- ✓ Ceramic Floor
- ✓ Walk in Wardrobe
- ✓ A/C
- ✓ Passenger Lift
- ✓ Double Glazed
- ✓ Kitchen/Dinette
- ✓ En Suite
- ✓ Soffit Ceilings
- ✓ Skirting
- ✓ Service Lift
- ✓ Terrace

Rooms

- ✓ Kitchen/Living/Dining : 0 x 0 m (0 m2)
- ✓ Double Bedroom : 0 x 0 m (0 m2)
- ✓ Double Bedroom : 0 x 0 m (0 m2)
- ✓ Double Bedroom : 0 x 0 m (0 m2)
- ✓ Bathroom : 0 x 0 m (0 m2)
- ✓ Bathroom : 0 x 0 m (0 m2)
- ✓ Shower Ensuite : 0 x 0 m (0 m2)

Gallery







Luana Borg

RE/MAX Elite - Sliema

M: 79212068

E: luanab@remax.com.mt

T: 21344204

RE/MAX Elite - Sliema

241, Tower Road, Sliema, Malta