

# Apartment in Sliema



**Sliema, Sliema and St Julians Surroundings**



**€2,300**

Reference No: 240511001-7482

 Total Rooms: **9**

 Floor Area (m<sup>2</sup>): **0**

 Bathrooms: **2**

 Bedrooms: **4**

# Apartment - For Rent - Sliema

SLIEMA-Spacious, bright and modern APARTMENT. Comprising an open plan kitchen/dining and living area complete with two air conditioners for comfort. A small balcony overlooking the central courtyard which can be accessed from the kitchen and two large double-glazed doors leading out to the front terrace, flooding the space with natural light. The terrace allows you to enjoy views of the sea and Manoel Island Yacht Yard — perfect for outdoor relaxation or dining. Four bedrooms, the master with en-suite and leading onto a balcony which connects with the second double bedroom, a third bedroom with two single beds leading to a small balcony overlooking the central courtyard. and one single bedroom or study room, laundry room, guest bathroom and 2 internal balconies. This property is being offered fully furnished and equipped, air conditioning throughout, dishwasher, washing machine, tumble dryer, vacuum cleaner and everything you need for a comfortable living home. It's located just 15 minutes away from ferries and shopping centres and it's only a 5-minute walk from bus stop with direct routes to and from Valletta, offering easy access to the city. This apartment provides both comfort and style, perfect for families or professionals looking for a spacious, well-located home with modern amenities and stunning views. Don't miss it!

## Features

- ✓ Lift
- ✓ Ceramic Floor
- ✓ Entrance Hall
- ✓ A/C
- ✓ Service Lift
- ✓ Balcony
- ✓ Kitchen/Dinette
- ✓ En Suite
- ✓ Soffit Ceilings
- ✓ Passenger Lift
- ✓ Double Glazed

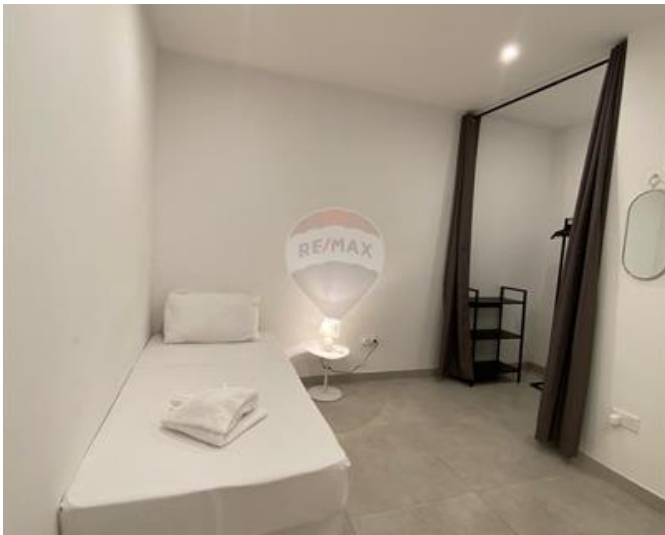
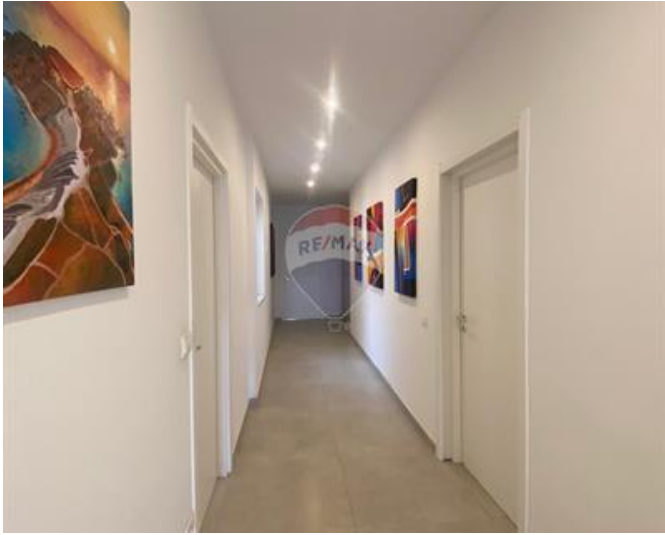
## Rooms

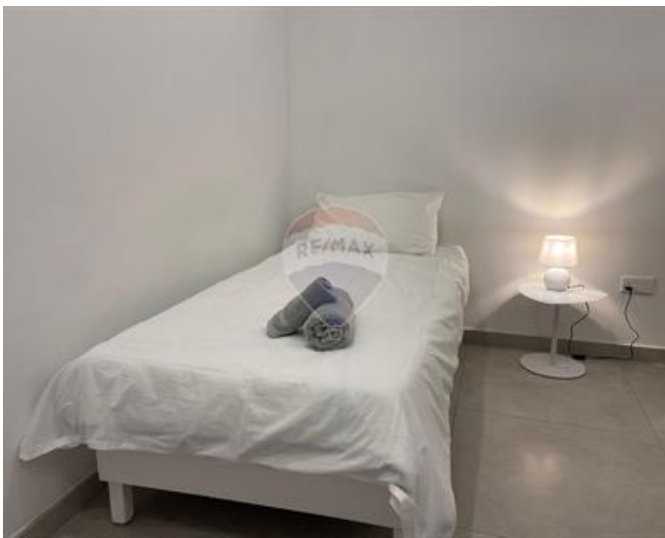
- ✓ Kitchen/Living/Dining : 0 x 0 m (0 m2)
- ✓ Double Bedroom : 0 x 0 m (0 m2)
- ✓ Double Bedroom : 0 x 0 m (0 m2)
- ✓ Twin Bedroom : 0 x 0 m (0 m2)
- ✓ Single Bedroom : 0 x 0 m (0 m2)
- ✓ Bathroom : 0 x 0 m (0 m2)

- ✓ Shower Ensuite : 0 x 0 m (0 m2)
- ✓ Office / Study : 0 x 0 m (0 m2)
- ✓ Laundry : 0 x 0 m (0 m2)

# Gallery











**RE/MAX Elite - Sliema**

RE/MAX Elite - Sliema

M: 21344204

E: [elt@remax.com.mt](mailto:elt@remax.com.mt)

T: 21344204

**RE/MAX Elite - Sliema**

241, Tower Road, Sliema, Malta