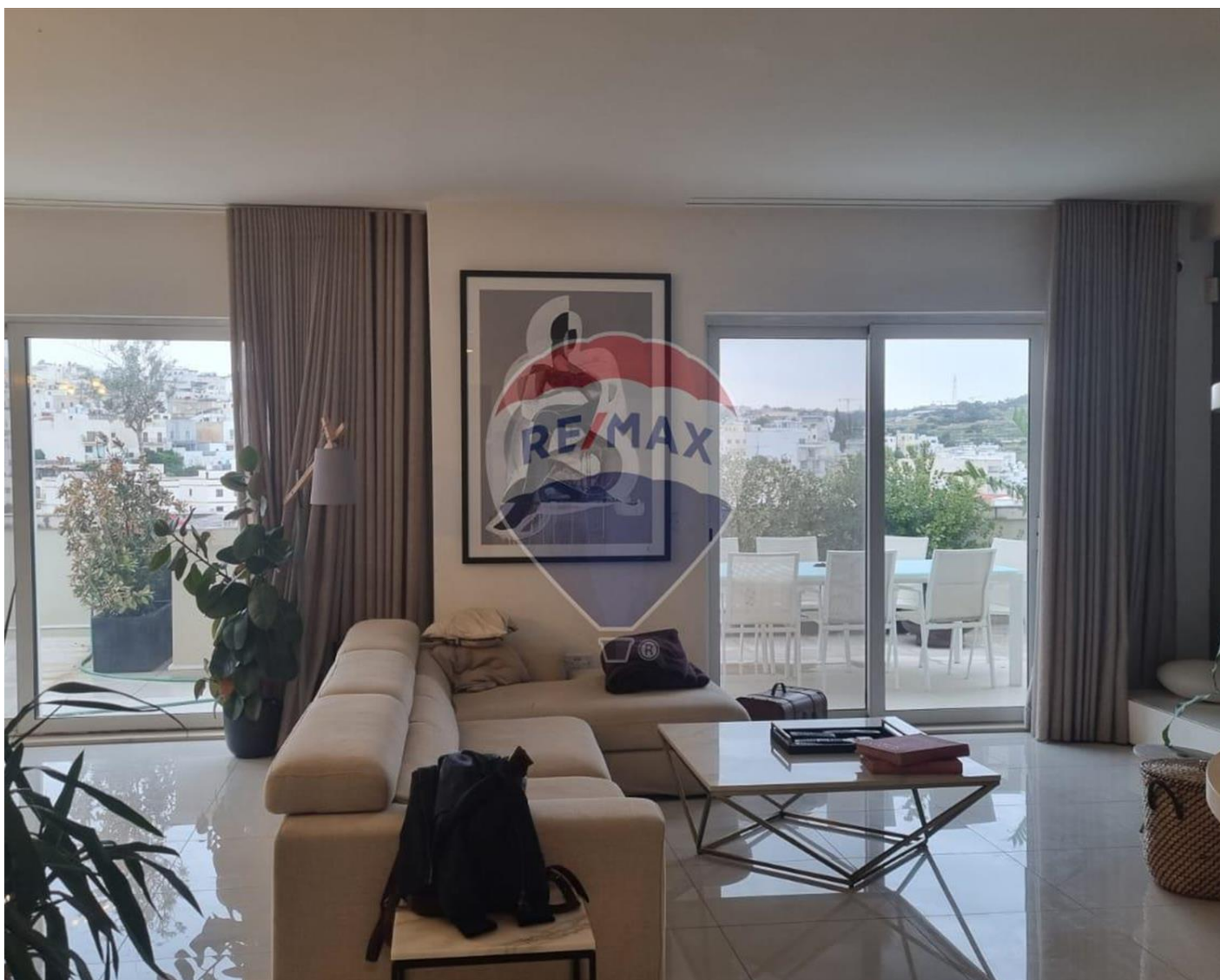


Penthouse in Swieqi



Swieqi, Sliema and St Julians Surroundings



€2,000

Reference No: 240511001-7114

 Total Rooms: 5

 Floor Area (m²) : 0

 Bathrooms: 2

 Bedrooms: 2

Penthouse - For Rent - Swieqi

SWIEQI - Modern, highly finished Penthouse located in a quiet residential area close to amenities and public transport. Property comprises of an open plan (fully equipped) kitchen / living / dining area leading onto a spacious terrace perfect for entertaining and enjoying the outside view. 2 double bedrooms, 2 bathrooms (main bedroom with en-suite). The apartment is offered fully equipped with air-conditioning throughout, dishwasher, washing machine, fireplace and much more. Garage is included and pet friendly. MUST BE SEEN

Features

- ✓ Lift
- ✓ En Suite
- ✓ A/C
- ✓ Service Lift
- ✓ Balcony
- ✓ Kitchen/Dinette
- ✓ Soffit Ceilings
- ✓ Skirting
- ✓ Terrace

Rooms

- ✓ Kitchen/Living/Dining : 0 x 0 m (0 m2)
- ✓ Double Bedroom : 0 x 0 m (0 m2)
- ✓ Double Bedroom : 0 x 0 m (0 m2)
- ✓ Bathroom : 0 x 0 m (0 m2)
- ✓ Shower Ensuite : 0 x 0 m (0 m2)

Gallery





RE/MAX Elite - Sliema

RE/MAX Elite - Sliema

M: 21344204

E: elt@remax.com.mt

T: 21344204

RE/MAX Elite - Sliema

241, Tower Road, Sliema, Malta