

# Apartment in Sliema



**Sliema, Sliema and St Julians Surroundings**



**€2,500**

Reference No: 240511001-6746

 Total Rooms: **7**

 Floor Area (m<sup>2</sup>) : **178**

 Bathrooms: **3**

 Bedrooms: **3**

# Apartment - For Rent - Sliema

SLIEMA - A spacious modern 178sqm apartment, in a prime area in Sliema, walking distance to Tigne Point and Sliema Seafront. Part of a well maintained residential block with underlying car spaces. This lovely home offers a very spacious living/dining room leading onto a terrace, separate large fully equipped kitchen, hall way, 3 double bedrooms, a guest bathroom, 2 shower en-suites and a back balcony. Includes an underlying car space.

## Features

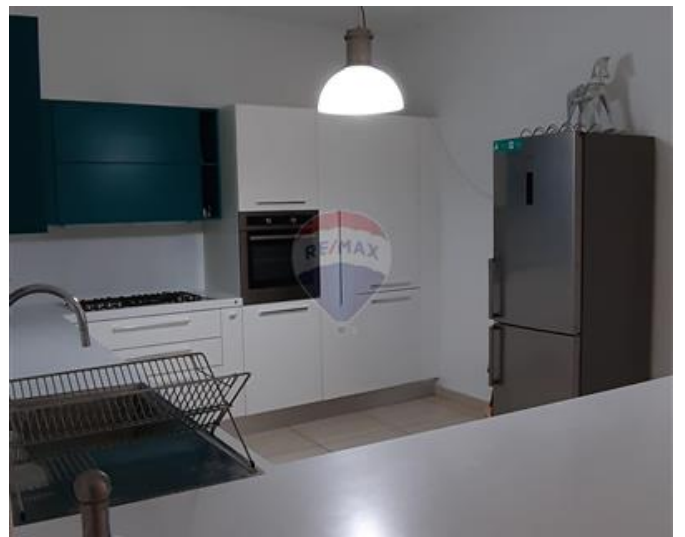
- ✓ Lift
- ✓ Ceramic Floor
- ✓ Soffit Ceilings
- ✓ Skirting
- ✓ Balcony
- ✓ Kitchen/Dinette
- ✓ En Suite
- ✓ A/C
- ✓ Terrace

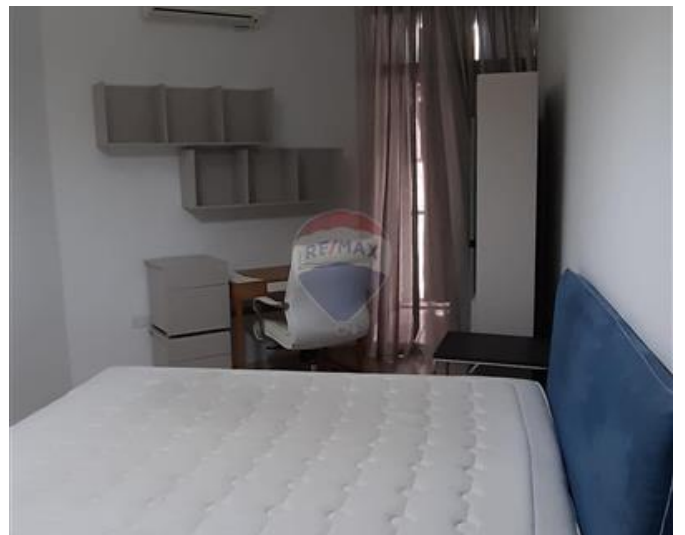
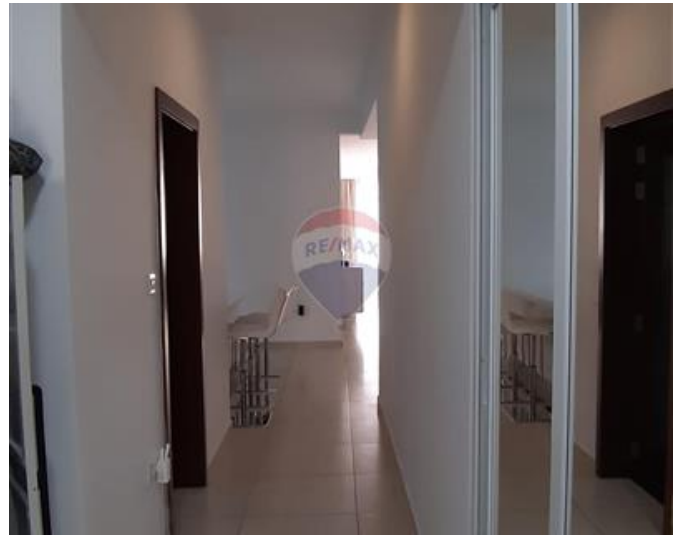
## Rooms

- ✓ Kitchen/Living/Dining : 0 x 0 m (0 m2)
- ✓ Double Bedroom : 0 x 0 m (0 m2)
- ✓ Double Bedroom : 0 x 0 m (0 m2)
- ✓ Double Bedroom : 0 x 0 m (0 m2)
- ✓ Bathroom : 0 x 0 m (0 m2)
- ✓ Shower Ensuite : 0 x 0 m (0 m2)
- ✓ Shower Ensuite : 0 x 0 m (0 m2)

# Gallery













**RE/MAX Elite - Sliema**

RE/MAX Elite - Sliema

M: 21344204

E: [elt@remax.com.mt](mailto:elt@remax.com.mt)

T: 21344204

**RE/MAX Elite - Sliema**

241, Tower Road, Sliema, Malta