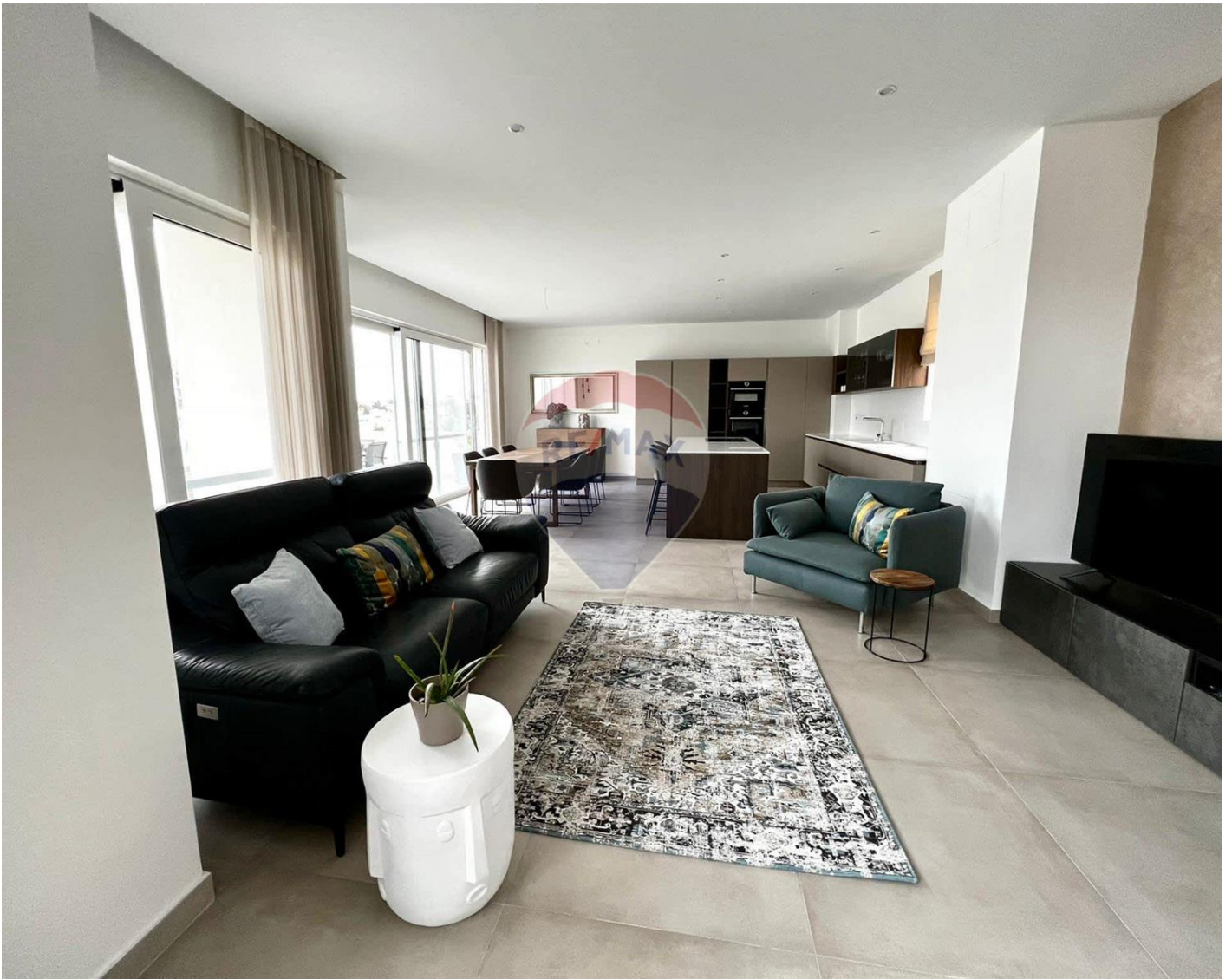


Penthouse Duplex in St Julian's



St Julian's, Sliema and St Julians Surroundings



€4,300

Reference No: 240511001-6742

 Total Rooms: **9**

 Floor Area (m²) : **0**

 Bathrooms: **5**

 Bedrooms: **3**

Penthouse Duplex - For Rent - St Julian's

ST JULIAN'S - This stunning brand new, designer finished semi-detached duplex penthouse, forming part of a highly finished complex, situated close to all amenities and to the seafront. Layout is in the form of a kitchen/living/dining leading onto a 100sqm terrace with views, three double bedrooms (all with en-suite) and a guest bathroom. The master bedroom is situated on the top floor enjoying a massive terrace with spectacular views. Property is fully furnished and equipped, A 2 car interconnecting lockup garage is included in the price. A truly one of a kind. Viewings are highly recommended.

Features

- ✓ Lift
- ✓ Ceramic Floor
- ✓ Walk in Wardrobe
- ✓ Water Utility
- ✓ Soffit Ceilings
- ✓ A/C
- ✓ Wi-Fi
- ✓ Service Lift
- ✓ Terrace
- ✓ Roof Terrace
- ✓ Kitchen/Dinette
- ✓ En Suite
- ✓ Entrance Hall
- ✓ Electricity Utility
- ✓ Gypsum Plastering
- ✓ Skirting
- ✓ Passenger Lift
- ✓ Double Glazed
- ✓ Back Yard

Rooms

- ✓ Kitchen/Living/Dining : 0 x 0 m (0 m2)
- ✓ Double Bedroom : 0 x 0 m (0 m2)
- ✓ Single Bedroom : 0 x 0 m (0 m2)
- ✓ Single Bedroom : 0 x 0 m (0 m2)
- ✓ Bathroom : 0 x 0 m (0 m2)

- ✓ Bathroom Ensuite : 0 x 0 m (0 m2)
- ✓ Shower : 0 x 0 m (0 m2)
- ✓ Shower Ensuite : 0 x 0 m (0 m2)
- ✓ Shower Ensuite : 0 x 0 m (0 m2)

Gallery







RE/MAX Elite - Sliema

RE/MAX Elite - Sliema

M: 21344204

E: elt@remax.com.mt

T: 21344204

RE/MAX Elite - Sliema

241, Tower Road, Sliema, Malta