

# Apartment in Swieqi



**Swieqi, Sliema and St Julians Surroundings**



**€1,400**

Reference No: 240511001-6731

 Total Rooms: **6**

 Floor Area (m<sup>2</sup>) : **0**

 Bathrooms: **2**

 Bedrooms: **3**

# Apartment - For Rent - Swieqi

SWIEQI- A modernly finished and furnished apartment, situated in a much sought-after residential area. Spacious accommodation comprises of a kitchen/living/dining area, 2 double bedrooms (main with an en-suite bathroom), a 2 beds single bedroom, and a guest bathroom. Property includes a lift, an intercom, a flat screen Plasma TV, a washing machine, and air-conditioning. Well worth viewing.

## Features

- ✓ Lift
- ✓ Ceramic Floor
- ✓ Entrance Hall
- ✓ Electricity Utility
- ✓ Gypsum Plastering
- ✓ Skirting
- ✓ Satellite / TV/ Cable
- ✓ Kitchen/Dinette
- ✓ En Suite
- ✓ Water Utility
- ✓ Soffit Ceilings
- ✓ A/C
- ✓ Balcony

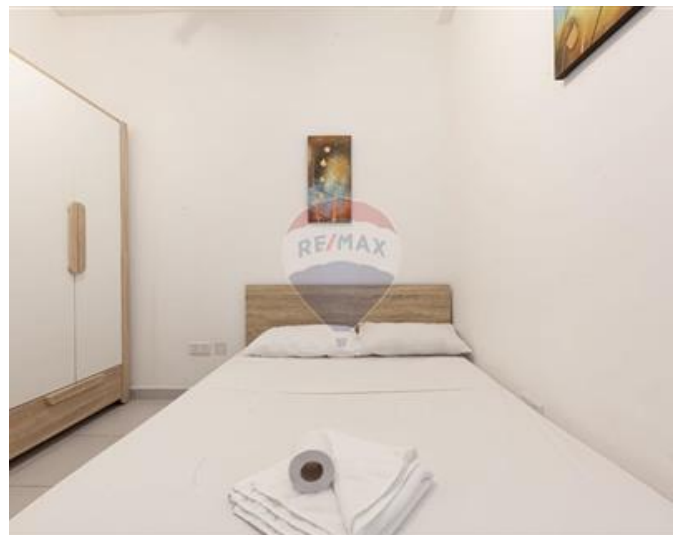
## Rooms

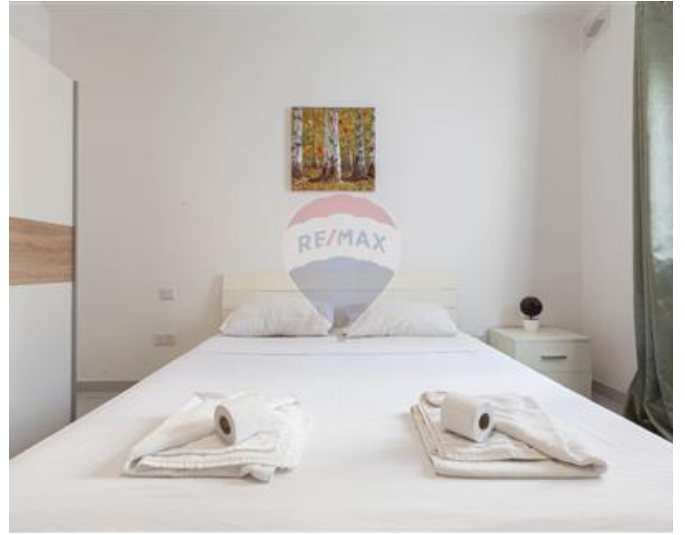
- ✓ Kitchen/Living/Dining : 0 x 0 m (0 m2)
- ✓ Double Bedroom : 0 x 0 m (0 m2)
- ✓ Double Bedroom : 0 x 0 m (0 m2)
- ✓ Single Bedroom : 0 x 0 m (0 m2)
- ✓ Bathroom : 0 x 0 m (0 m2)
- ✓ Bathroom Ensuite : 0 x 0 m (0 m2)

# Gallery













**RE/MAX Elite - Sliema**

RE/MAX Elite - Sliema

M: 21344204

E: [elt@remax.com.mt](mailto:elt@remax.com.mt)

T: 21344204

**RE/MAX Elite - Sliema**

241, Tower Road, Sliema, Malta