

Penthouse in Swieqi



Swieqi, Sliema and St Julians Surroundings



€2,200

Reference No: 240511001-6504

 Total Rooms: **6**

 Floor Area (m²): **130**

 Bathrooms: **2**

 Bedrooms: **2**

Penthouse - For Rent - Swieqi

SWIEQI - A highly finished and furnished penthouse, forming part of an up-market development, located in the quiet residential area of this town, yet within easy walking distance to all amenities, as well as the popular Spinola Bay in St Julian's. Offering a square and spacious layout and enjoying plenty of natural light throughout, this property is tastefully decorated, comprising of an open plan living/dining and a fully equipped kitchen, leading onto a sizeable front terrace, lovely for al fresco dining; two double bedrooms (main with an en-suite shower), a guest bathroom, a laundry/storage room and a back terrace. To further compliment this property is the use of a communal swimming pool and a gym. An optional two car lock-up garage is available. An ideal solution for those looking to rent a home away from home. Viewings are highly recommended.

Features

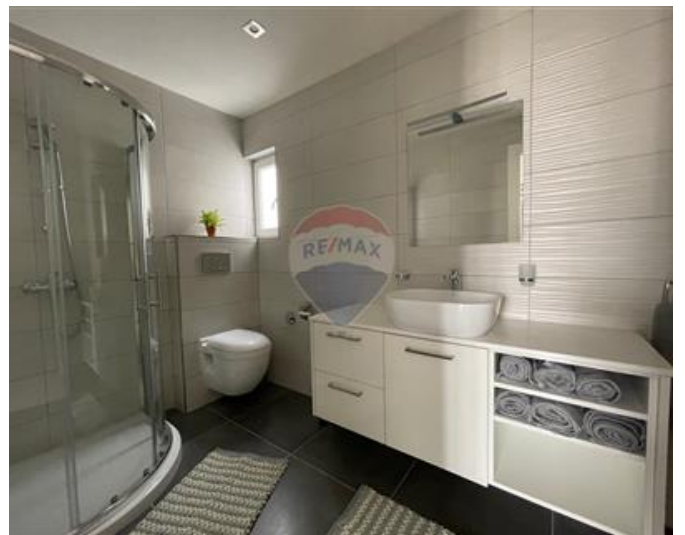
- ✓ Lift
- ✓ Video Hall Porter
- ✓ Soffit Ceilings
- ✓ 3 Phase Electricity
- ✓ Skirting
- ✓ Pool
- ✓ Balcony
- ✓ Communal Pool
- ✓ Ceramic Floor
- ✓ En Suite
- ✓ Gypsum Plastering
- ✓ A/C
- ✓ Double Glazed
- ✓ Terrace
- ✓ Pool Deck

Rooms

- ✓ Kitchen/Living/Dining : 0 x 0 m (0 m2)
- ✓ Double Bedroom : 0 x 0 m (0 m2)
- ✓ Double Bedroom : 0 x 0 m (0 m2)
- ✓ Shower Ensuite : 0 x 0 m (0 m2)
- ✓ Bathroom : 0 x 0 m (0 m2)
- ✓ Laundry : 0 x 0 m (0 m2)

Gallery









RE/MAX Elite - Sliema

RE/MAX Elite - Sliema

M: 21344204

E: elt@remax.com.mt

T: 21344204

RE/MAX Elite - Sliema

241, Tower Road, Sliema, Malta