

# Apartment in Sliema



## Sliema, Sliema and St Julians Surroundings



**€3,500**

Reference No: 240511001-6475

 Total Rooms: 7

 Floor Area (m<sup>2</sup>) : 130

 Bathrooms: 2

 Bedrooms: 2

# Apartment - For Rent - Sliema

Sliema – Pleasant and homely seafront Apartment located in a sought after area. Layout is in the form of a wide, parqueted entrance hall, study, open plan living and dining area leading out to a good size balcony enjoying spectacular views of Spinola and Balluta bay, fully equipped kitchen, two double bedrooms (both with en-suite) and laundry room. Beach clubs, promenade, restaurants and shops are walking distance to this apartment, however an interconnecting two car garage space is also available exclusively for the tenants of this apartment.

## Features

- ✓ Lift
- ✓ En Suite
- ✓ Entrance Hall
- ✓ Marble Floor
- ✓ Passenger Lift
- ✓ Balcony
- ✓ Kitchen/Dinette
- ✓ Walk in Wardrobe
- ✓ Parquet Floor
- ✓ A/C
- ✓ Double Glazed

## Rooms

- ✓ Double Bedroom : 0 x 0 m (0 m2)
- ✓ Double Bedroom : 0 x 0 m (0 m2)
- ✓ Kitchen : 0 x 0 m (0 m2)
- ✓ Living/Dining : 0 x 0 m (0 m2)
- ✓ Hall : 0 x 0 m (0 m2)
- ✓ Bathroom Ensuite : 0 x 0 m (0 m2)
- ✓ Bathroom Ensuite : 0 x 0 m (0 m2)
- ✓ Box Room : 0 x 0 m (0 m2)

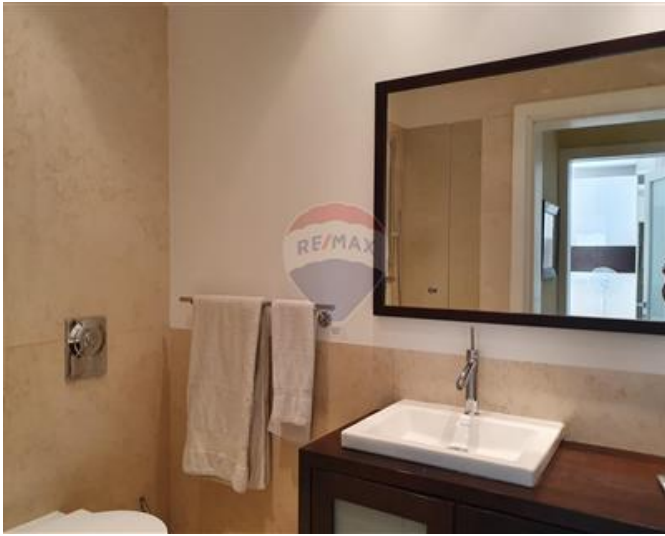
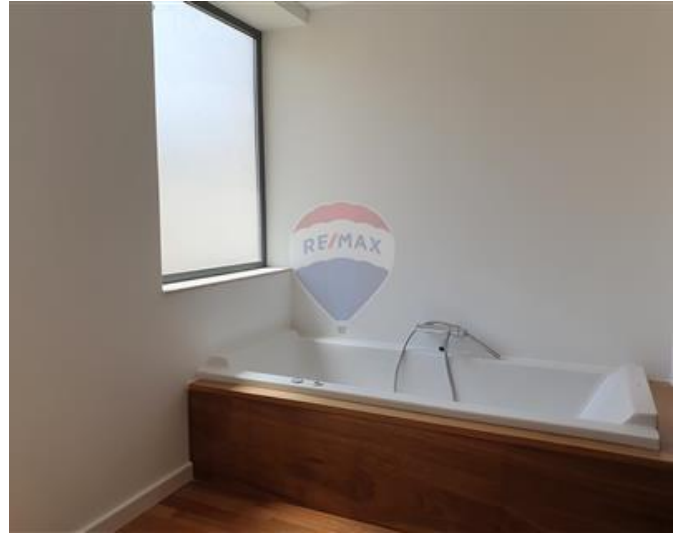
# Gallery













**RE/MAX Elite - Sliema**

RE/MAX Elite - Sliema

M: 21344204

E: [elt@remax.com.mt](mailto:elt@remax.com.mt)

T: 21344204

**RE/MAX Elite - Sliema**

241, Tower Road, Sliema, Malta