

Apartment in Swieqi



Swieqi, Sliema and St Julians Surroundings



€1,400

Reference No: 240511001-6439

 Total Rooms: 4

 Floor Area (m²) : 0

 Bathrooms: 1

 Bedrooms: 3

Apartment - For Rent - Swieqi

Bright & spacious APARTMENT facing the Swieqi Valley, centrally located & just 5mins walk to Julian's Promenade. The property consists of a welcoming hall, leading to a spacious open plan kitchen, living & dining room with a front balcony facing valley views, 3 double bedrooms, main guest bathroom (bath tub) & a laundry/storage room. Fully equipped, fully furnished & having an AC unit in 1 of the bedrooms. Apartment is not served with a lift though it's on the first floor (approx. 20 steps).

Features

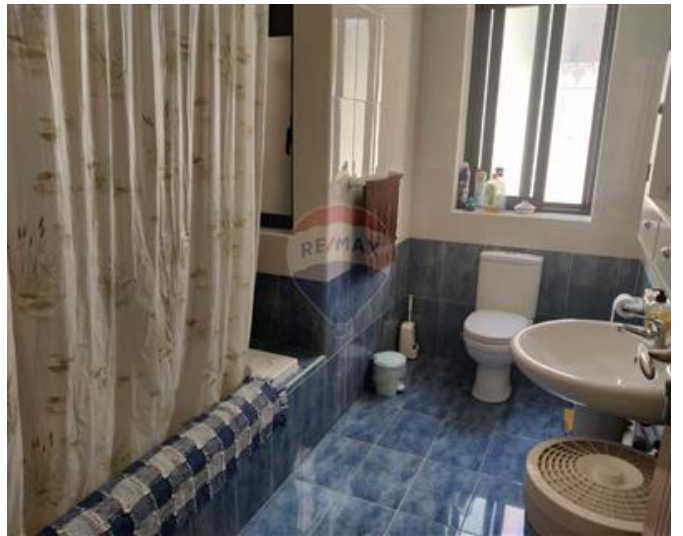
- ✓ Lift
- ✓ Ceramic Floor
- ✓ Entrance Hall
- ✓ Electricity Utility
- ✓ Skirting
- ✓ Balcony
- ✓ Kitchen/Dinette
- ✓ Walk in Wardrobe
- ✓ Water Utility
- ✓ A/C
- ✓ Passenger Lift

Rooms

- ✓ Double Bedroom : 0 x 0 m (0 m2)
- ✓ Double Bedroom : 0 x 0 m (0 m2)
- ✓ Double Bedroom : 0 x 0 m (0 m2)
- ✓ Bathroom : 0 x 0 m (0 m2)

Gallery









RE/MAX Elite - Sliema

RE/MAX Elite - Sliema

M: 21344204

E: elt@remax.com.mt

T: 21344204

RE/MAX Elite - Sliema

241, Tower Road, Sliema, Malta