

Penthouse in St Julian's



St Julian's, Sliema and St Julians Surroundings



€1,400

Reference No: 240511001-5720

 Total Rooms: **5**

 Floor Area (m²) : **103**

 Bathrooms: **2**

 Bedrooms: **2**

Penthouse - For Rent - St Julian's

ST JULIAN'S – A modern penthouse with exquisite interior design, situated in a quiet area, yet close to all amenities and to Balluta Bay. Layout is in the form a large open plan kitchen/living/dining which leads onto a beautiful terrace with unobstructed open views; two double bedrooms (main with an en-suite shower), and a guest shower room. Property is being offered fully equipped with high standard devices, kitchen utensils and an advanced air-conditioning system. Small pets are accepted. Not to be missed!

Features

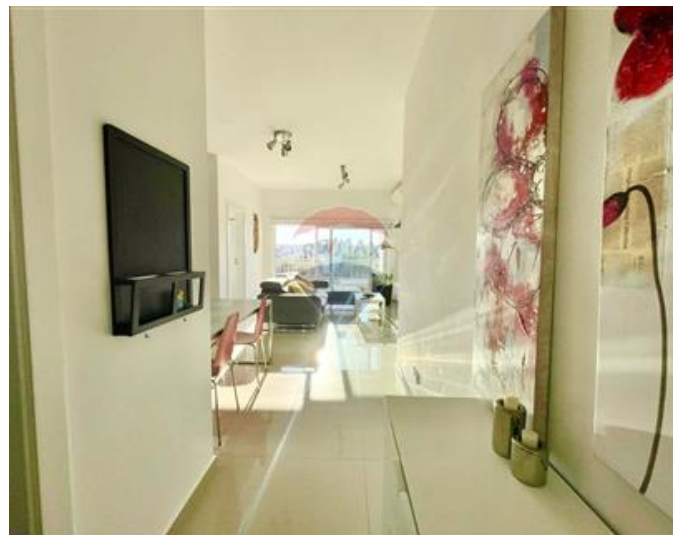
- ✓ Lift
- ✓ Video Hall Porter
- ✓ Entrance Hall
- ✓ A/C
- ✓ Wi-Fi
- ✓ Terrace
- ✓ Ceramic Floor
- ✓ En Suite
- ✓ Gypsum Plastering
- ✓ Skirting
- ✓ Double Glazed

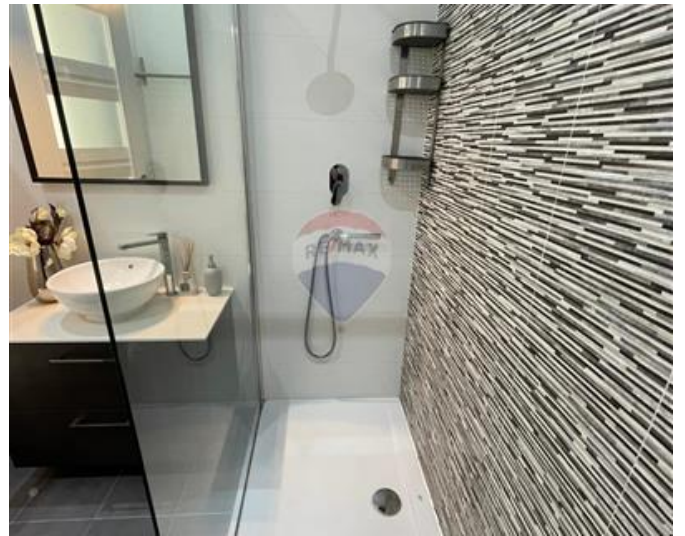
Rooms

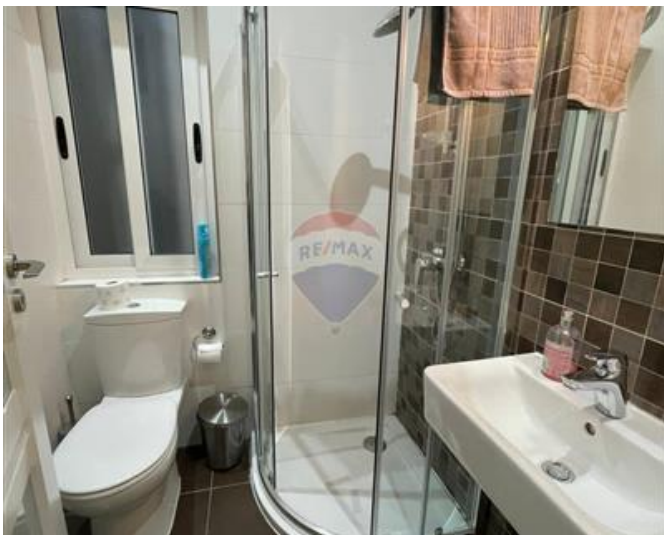
- ✓ Kitchen/Living/Dining : 0 x 0 m (0 m2)
- ✓ Double Bedroom : 0 x 0 m (0 m2)
- ✓ Shower Ensuite : 0 x 0 m (0 m2)
- ✓ Double Bedroom : 0 x 0 m (0 m2)
- ✓ Shower : 0 x 0 m (0 m2)

Gallery











RE/MAX Elite - Sliema

RE/MAX Elite - Sliema

M: 21344204

E: elt@remax.com.mt

T: 21344204

RE/MAX Elite - Sliema

241, Tower Road, Sliema, Malta