

# Apartment in St Julian's



## St Julian's, Sliema and St Julians Surroundings



**€7,000**

Reference No: 240511001-5667

 Total Rooms: **7**

 Floor Area (m<sup>2</sup>) : **210**

 Bathrooms: **3**

 Bedrooms: **2**

# Apartment - For Rent - St Julian's

PORTOMASO (LAGUNA) - This luxurious apartment forms part of Malta's prestigious and elite, high-end residential complex, having direct access to the beautifully landscaped sea-water lagoon, overlooking the Yacht Marina and the sea beyond. Finished to an impeccable standard, this apartment is spread over 210SqM, offering a welcoming entrance hall opening up onto an open concept kitchen/living/dining which leads out to a terrace; two double bedrooms (both with en-suite showers and balconies), a guest toilet room and a utility room. Complementary features include built-in high-end appliances, a wine cooler, floor-heating throughout, a private staircase to access the communal pool and a car space. An ideal choice for those seeking a quiet and relaxing environment with the convenience of living by walking distance to a bustling commercial and entertainment center. Viewings are highly recommended.

## Features

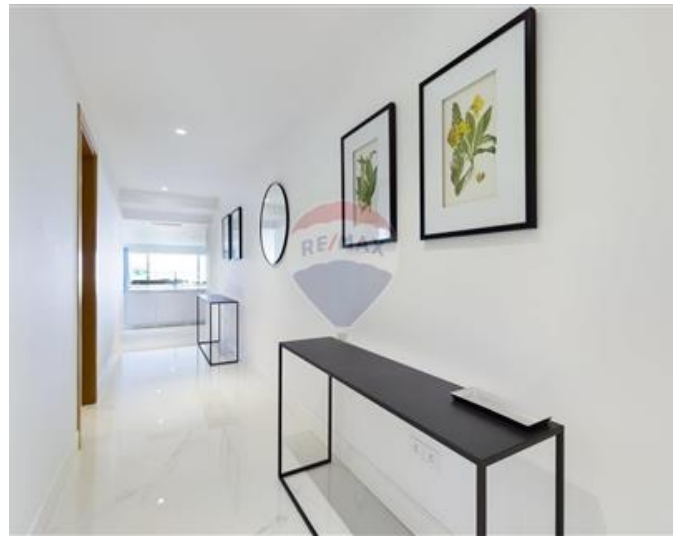
- ✓ Video Hall Porter
- ✓ Entrance Hall
- ✓ A/C
- ✓ Pool
- ✓ Balcony
- ✓ Waste Room
- ✓ En Suite
- ✓ Floor Heating
- ✓ Double Glazed
- ✓ Terrace
- ✓ Video Intercom

## Rooms

- ✓ Kitchen/Living/Dining : 0 x 0 m (0 m2)
- ✓ Double Bedroom : 0 x 0 m (0 m2)
- ✓ Bathroom Ensuite : 0 x 0 m (0 m2)
- ✓ Double Bedroom : 0 x 0 m (0 m2)
- ✓ Bathroom : 0 x 0 m (0 m2)
- ✓ Box Room : 0 x 0 m (0 m2)
- ✓ Guest Toilet : 0 x 0 m (0 m2)

# Gallery









**RE/MAX Elite - Sliema**

RE/MAX Elite - Sliema

M: 21344204

E: [elt@remax.com.mt](mailto:elt@remax.com.mt)

T: 21344204

**RE/MAX Elite - Sliema**

241, Tower Road, Sliema, Malta