

# Townhouse in Sliema




**Sliema, Sliema and St Julians Surroundings**



**€1,800**

Reference No: 240511001-562

 Total Rooms: **9**

 Floor Area (m<sup>2</sup>): **0**

 Bathrooms: **4**

 Bedrooms: **4**

# Townhouse - For Rent - Sliema

SLIEMA - A nicely converted TOWNHOUSE situated just off the Sliema promenade. Property enjoys a spacious floor plan and retains numerous authentic architectural features. Layout is in the form of entrance hall, large living/kitchen/dining area, yard and a wonderful roof terrace with partial sea views. Wide, comfortable staircase leads to 4 double bedrooms set in 3 different floors and all with en-suite and air-conditioning.

## Features

- ✓ En Suite
- ✓ A/C
- ✓ Yard
- ✓ Back Yard
- ✓ Entrance Hall
- ✓ Terrace
- ✓ Balcony
- ✓ Roof Terrace

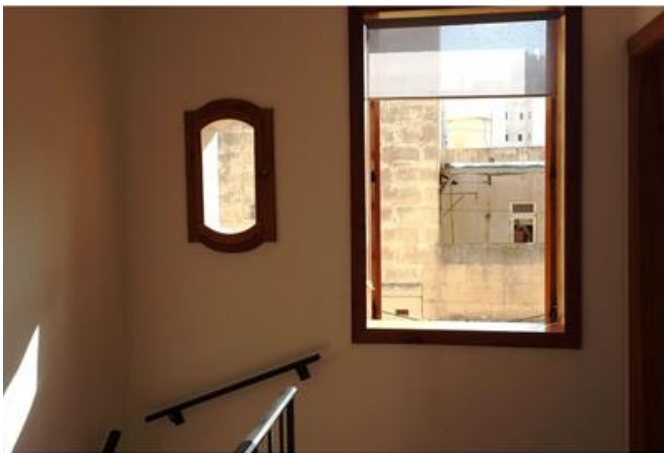
## Rooms

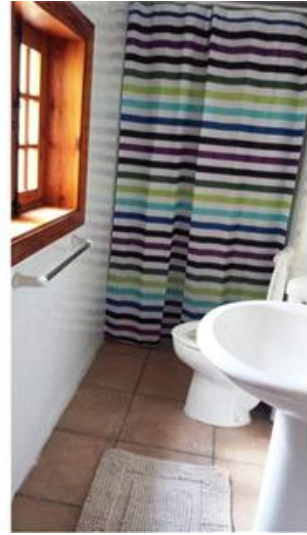
- ✓ Kitchen/Living/Dining : 0 x 0 m (0 m2)
- ✓ Double Bedroom : 0 x 0 m (0 m2)
- ✓ Double Bedroom : 0 x 0 m (0 m2)
- ✓ Double Bedroom : 0 x 0 m (0 m2)
- ✓ Double Bedroom : 0 x 0 m (0 m2)
- ✓ Bathroom Ensuite : 0 x 0 m (0 m2)
- ✓ Bathroom Ensuite : 0 x 0 m (0 m2)
- ✓ Bathroom Ensuite : 0 x 0 m (0 m2)
- ✓ Bathroom Ensuite : 0 x 0 m (0 m2)

# Gallery











**RE/MAX Elite - Sliema**

RE/MAX Elite - Sliema

M: 21344204

E: [elt@remax.com.mt](mailto:elt@remax.com.mt)

T: 21344204

**RE/MAX Elite - Sliema**

241, Tower Road, Sliema, Malta