

# Apartment in Swieqi



**Swieqi, Sliema and St Julians Surroundings**



**€1,900**

Reference No: 240511001-5516

 Total Rooms: **6**

 Floor Area (m<sup>2</sup>) : **0**

 Bathrooms: **2**

 Bedrooms: **3**

# Apartment - For Rent - Swieqi

SWIEQI - Located in a quiet residential area, within easy walking distance to all amenities is this third floor apartment. Enjoying a spacious layout and plenty of natural light, accommodation comprises of an open plan kitchen / living / dining area, three double bedrooms(main with an en-suite) and a guest bathroom. Viewings are recommended.

## Features

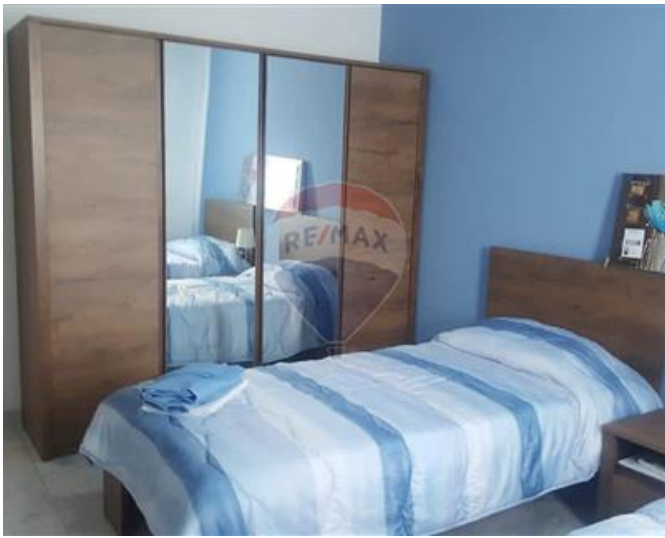
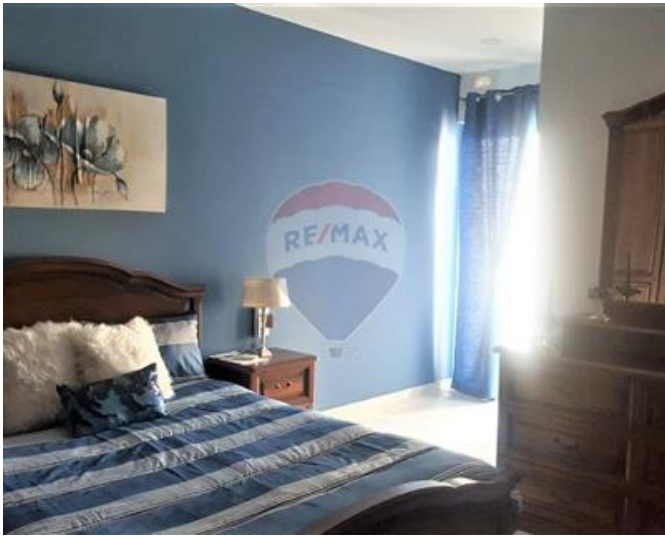
- ✓ Lift
- ✓ Entrance Hall
- ✓ Balcony
- ✓ En Suite
- ✓ A/C

## Rooms

- ✓ Kitchen/Living/Dining : 0 x 0 m (0 m2)
- ✓ Double Bedroom : 0 x 0 m (0 m2)
- ✓ Double Bedroom : 0 x 0 m (0 m2)
- ✓ Double Bedroom : 0 x 0 m (0 m2)
- ✓ Bathroom : 0 x 0 m (0 m2)
- ✓ Bathroom Ensuite : 0 x 0 m (0 m2)

# Gallery







**RE/MAX Elite - Sliema**

RE/MAX Elite - Sliema

M: 21344204

E: [elt@remax.com.mt](mailto:elt@remax.com.mt)

T: 21344204

**RE/MAX Elite - Sliema**

241, Tower Road, Sliema, Malta