

Apartment in Sliema



Sliema, Sliema and St Julians Surroundings



€6,000

Reference No: 240511001-5224

 Total Rooms: **6**

 Floor Area (m²) : **220**

 Bathrooms: **3**

 Bedrooms: **3**

Apartment - For Rent - Sliema

Tigne Point - A stunning, corner apartment located directly at the water's edge, boasting spectacular 180 degree sea views. Accommodation spread on 220 sq m, including a 40 sq m external area. Layout is in the form of a generous open plan living/dining/kitchen area leading to a terrace, a study, three double bedrooms (all with its own balconies), three bathrooms, walk-in wardrobe, utility room and guest toilet. No expense has been spared in finishing and furnishing this apartment: all kitchen appliances, the washing machine and the tumble drier are Miele, all curtain rails are electric, the bathrooms have underfloor heating and heated towel rails and the apartment comes with two car parking spaces on Level -1. This highly finished attractive property is forming part of a newly built development in the heart of this much sought after area, and enjoys all the amenities, including cafes, restaurants, shopping center, supermarkets; buses and ferries, practically on its doorstep. The complex itself is almost fully pedestrianized and offers a quiet and relaxing environment while it also situated in the center. Residents may also make use of communal swimming pool, enjoying spectacular views of the Valletta bastions.

Features

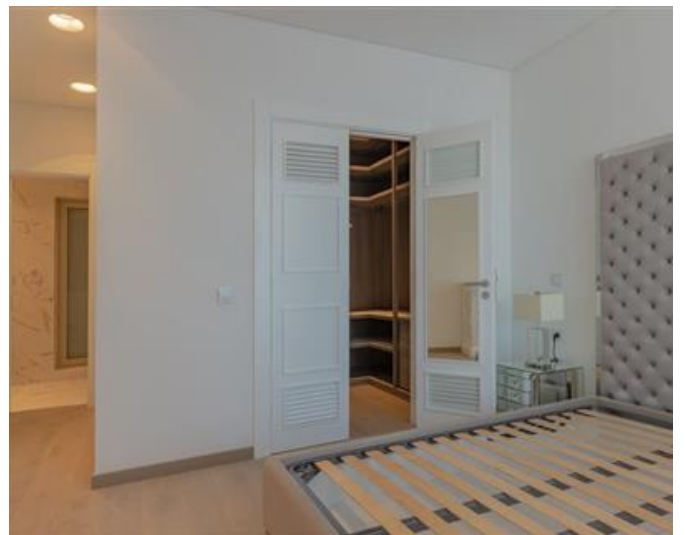
- ✓ Video Hall Porter
- ✓ Parquet Floor
- ✓ Terrace
- ✓ En Suite
- ✓ Pool
- ✓ Balcony

Rooms

- ✓ Double Bedroom : 0 x 0 m (0 m2)
- ✓ Double Bedroom : 0 x 0 m (0 m2)
- ✓ Double Bedroom : 0 x 0 m (0 m2)
- ✓ Bathroom : 0 x 0 m (0 m2)
- ✓ Bathroom : 0 x 0 m (0 m2)
- ✓ Bathroom : 0 x 0 m (0 m2)

Gallery









RE/MAX Elite - Sliema

RE/MAX Elite - Sliema

M: 21344204

E: elt@remax.com.mt

T: 21344204

RE/MAX Elite - Sliema

241, Tower Road, Sliema, Malta