

# Apartment in Sliema




**Sliema, Sliema and St Julians Surroundings**



**€1,250**

Reference No: 240511001-5205

 Total Rooms: **4**

 Floor Area (m<sup>2</sup>) : **75**

 Bathrooms: **1**

 Bedrooms: **2**

# Apartment - For Rent - Sliema

SLIEMA - Luxuriously finished is this sixth floor apartment situated in a residential, safe block just a few minutes away from Balluta bay, public transport and restaurants. Layout comprises of a combined spacious open plan kitchen/living/dining area , one double bedroom leading out to a balcony, a guest bedroom, bathroom and boxroom. Fully air-conditioned and designed to highest of standards including soffit ceilings, spotlights, soft-closing kitchen furniture, bathroom heaters and more facilities. Highly recommended!

## Features

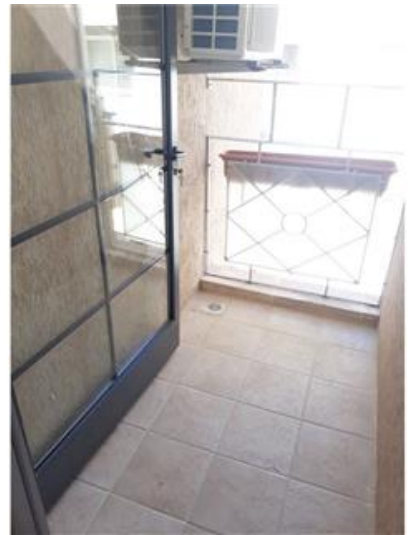
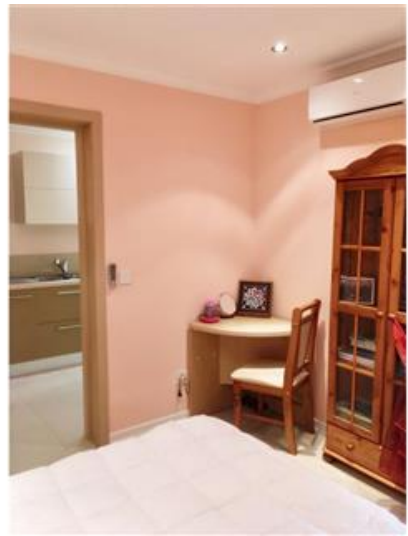
- ✓ Lift
- ✓ Soffit Ceilings
- ✓ Wi-Fi
- ✓ Ceramic Floor
- ✓ A/C
- ✓ Balcony

## Rooms

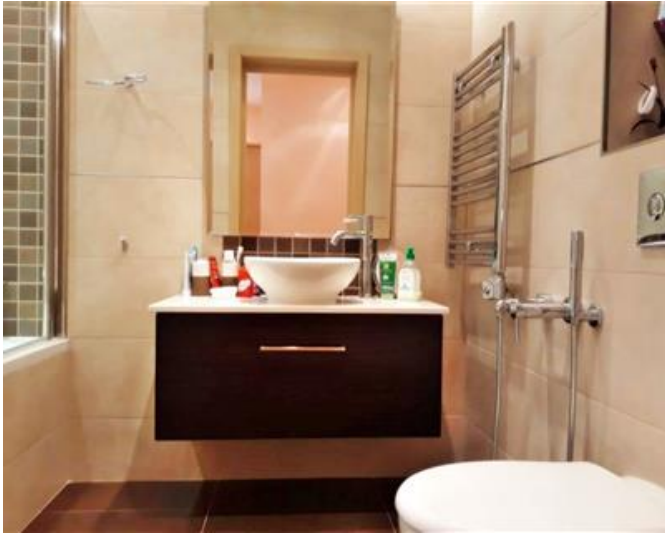
- ✓ Kitchen/Living/Dining : 0 x 0 m (0 m2)
- ✓ Bathroom : 0 x 0 m (0 m2)
- ✓ Double Bedroom : 0 x 0 m (0 m2)
- ✓ Single Bedroom : 0 x 0 m (0 m2)

# Gallery











**RE/MAX Elite - Sliema**

RE/MAX Elite - Sliema

M: 21344204

E: [elt@remax.com.mt](mailto:elt@remax.com.mt)

T: 21344204

**RE/MAX Elite - Sliema**

241, Tower Road, Sliema, Malta