

# Apartment in Sliema



**Sliema, Sliema and St Julians Surroundings**



**€100**

Reference No: 240511001-4776

 Total Rooms: **3**

 Floor Area (m<sup>2</sup>) : **0**

 Bathrooms: **1**

 Bedrooms: **1**

# Apartment - For Rent - Sliema

SLIEMA - A perfectly located, seafront apartment commanding beautiful views, just a step away from shops, beaches and public transport. Very bright accommodation comprises of an entrance hall, open plan kitchen/dining and living leading onto a balcony, double bedroom and a bathroom. Property is served with lift, fully equipped including flat screen television, washing machine combined with tumble dryer, and A/C. Roof terrace is accessible. Not to be missed.

## Features

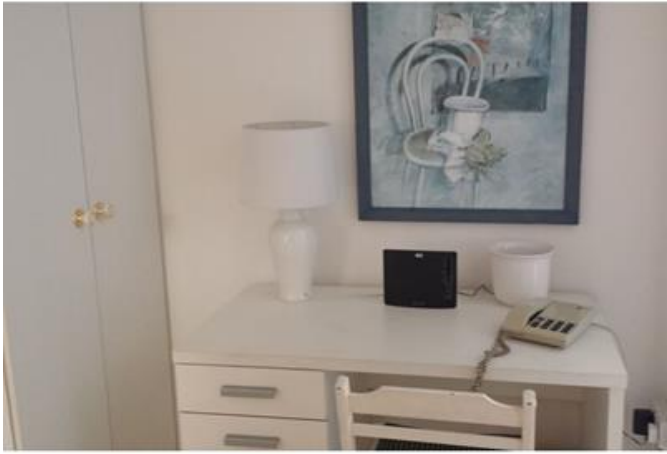
- ✓ Lift
- ✓ Entrance Hall
- ✓ Skirting
- ✓ Ceramic Floor
- ✓ A/C
- ✓ Balcony

## Rooms

- ✓ Double Bedroom : 0 x 0 m (0 m2)
- ✓ Bathroom : 0 x 0 m (0 m2)
- ✓ Kitchen/Living/Dining : 0 x 0 m (0 m2)

# Gallery







**RE/MAX Elite - Sliema**

RE/MAX Elite - Sliema

M: 21344204

E: [elt@remax.com.mt](mailto:elt@remax.com.mt)

T: 21344204

**RE/MAX Elite - Sliema**

241, Tower Road, Sliema, Malta