

Apartment in Sliema



Sliema, Sliema and St Julians Surroundings



€4,000

Reference No: 240511001-4708

 Total Rooms: **9**

 Floor Area (m²): **240**

 Bathrooms: **3**

 Bedrooms: **4**

Apartment - For Rent - Sliema

SLIEMA - An outstanding, newly finished apartment located in this sought after area, surrounded by every single amenity needed. Spacious accommodation is spread of 240 sq meters and enjoying impressive views of Manuel Island, Valletta and the sea from its large sunny terrace ideal for relaxing or entertaining. Apart from the beautiful, modern kitchen already fitted with appliances, this property is being offered unfurnished, giving the opportunity to tenants to create their own ambience. Layout comprises of a bright entrance hall, large open plan kitchen/living/dining leading onto the terrace, pantry, utility room, main bathroom, 4 bedrooms (two of them with balconies and two of them with en-suite bathroom). Property is complemented with a car space.

Features

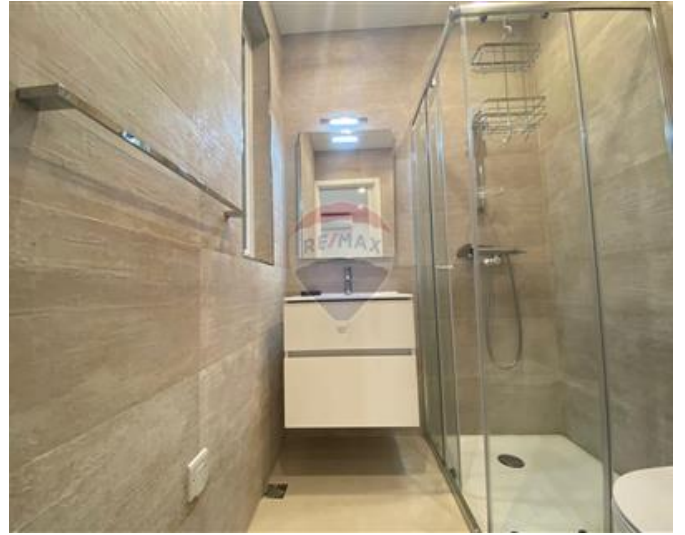
- ✓ Lift
- ✓ Video Hall Porter
- ✓ Entrance Hall
- ✓ A/C
- ✓ Double Glazed
- ✓ Balcony
- ✓ Ceramic Floor
- ✓ En Suite
- ✓ Towel Warmers
- ✓ Skirting
- ✓ Terrace

Rooms

- ✓ Double Bedroom : 0 x 0 m (0 m2)
- ✓ Double Bedroom : 0 x 0 m (0 m2)
- ✓ Double Bedroom : 0 x 0 m (0 m2)
- ✓ Double Bedroom : 0 x 0 m (0 m2)
- ✓ Bathroom Ensuite : 0 x 0 m (0 m2)
- ✓ Bathroom Ensuite : 0 x 0 m (0 m2)
- ✓ Bathroom : 0 x 0 m (0 m2)
- ✓ Kitchen/Living/Dining : 0 x 0 m (0 m2)
- ✓ Box Room : 0 x 0 m (0 m2)

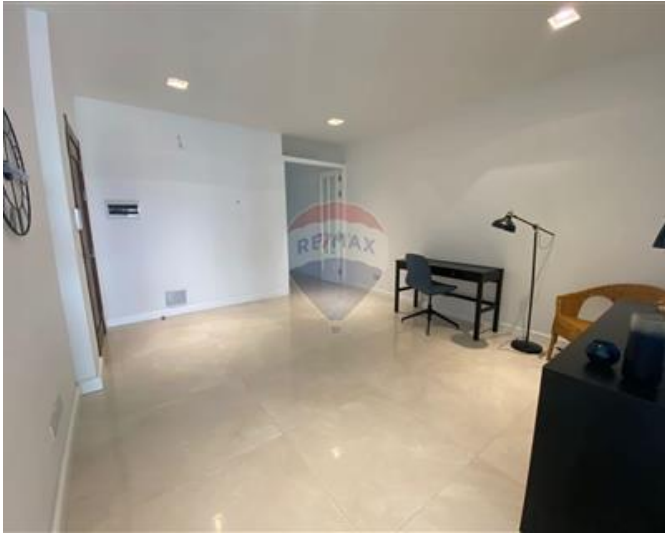
Gallery













RE/MAX Elite - Sliema

RE/MAX Elite - Sliema

M: 21344204

E: elt@remax.com.mt

T: 21344204

RE/MAX Elite - Sliema

241, Tower Road, Sliema, Malta