

Townhouse in Sliema



Sliema, Sliema and St Julians Surroundings



€3,500

Reference No: 240511001-4697

 Total Rooms: **6**

 Floor Area (m²): **0**

 Bathrooms: **2**

 Bedrooms: **3**

Townhouse - For Rent - Sliema

A Townhouse situated in the delightful "Pjazza Tigne" and forming part of a much sought after, exclusive development. This highly finished property offers all the conveniences for a modern lifestyle. Enjoying plenty of natural light and a spacious layout, comprising of a welcoming hallway leading to an open plan living/ dining/ kitchen area, opening onto a wide terrace, overlooking the Pjazza, also at this level is a guest toilet. An elegant wooden staircase leads to the upper floors, where one will find three bedrooms and two bathrooms (one en suite). There is a roof garden on the third floor, ideal for entertaining. This property is one of a kind and it is finished to the highest of standards, including typical, hand painted Maltese floor tiles throughout and all amenities, as well as underlying parking. Further complimenting this unique townhouse is the optional use of a communal swimming pool. Viewings are highly recommended for anyone looking to rent a home away from home.

Features

- ✓ Ceramic Floor
- ✓ En Suite
- ✓ Terrace
- ✓ Video Hall Porter
- ✓ Entrance Hall
- ✓ Balcony

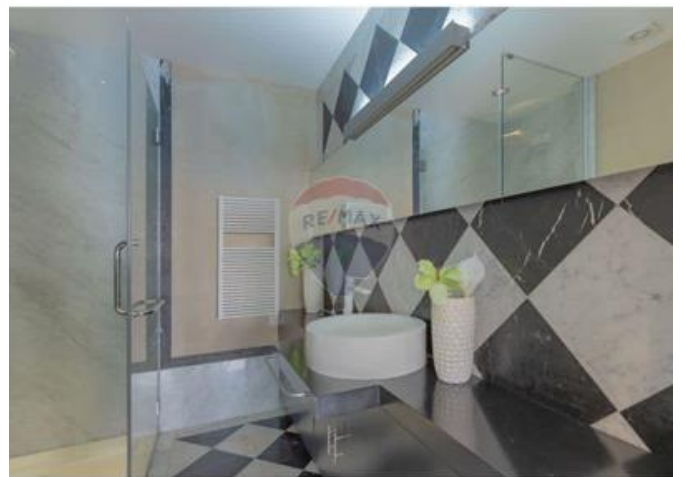
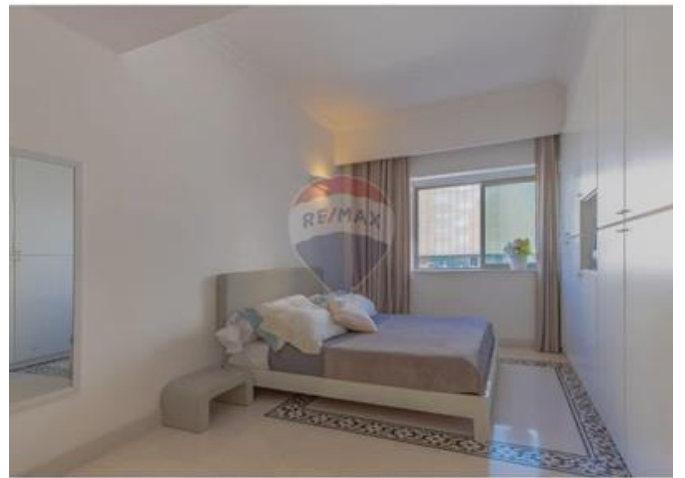
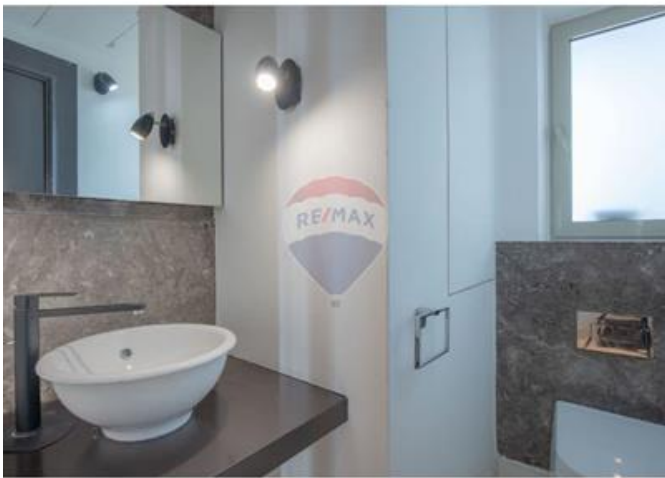
Rooms

- ✓ Bathroom : 0 x 0 m (0 m2)
- ✓ Kitchen/Living/Dining : 0 x 0 m (0 m2)
- ✓ Shower Ensuite : 0 x 0 m (0 m2)
- ✓ Double Bedroom : 0 x 0 m (0 m2)
- ✓ Double Bedroom : 0 x 0 m (0 m2)
- ✓ Double Bedroom : 0 x 0 m (0 m2)

Gallery













RE/MAX Elite - Sliema

RE/MAX Elite - Sliema

M: 21344204

E: elt@remax.com.mt

T: 21344204

RE/MAX Elite - Sliema

241, Tower Road, Sliema, Malta