

Apartment in Sliema



Sliema, Sliema and St Julians Surroundings



€1,850

Reference No: 240511001-4691

 Total Rooms: **5**

 Floor Area (m²): **0**

 Bathrooms: **2**

 Bedrooms: **3**

Apartment - For Rent - Sliema

SLIEMA - Located just off the promenade and minutes away from Tigne Point, the shops and cafes, is this spacious and bright apartment. Accommodation comprises of an entrance hall, an open plan kitchen / living / dining, leading onto a front balcony, three bedrooms, two bathrooms (one en-suite) and a laundry / storage room. This property is finished to high standards and includes all amenities. Optional parking available. Worth viewing!

Features

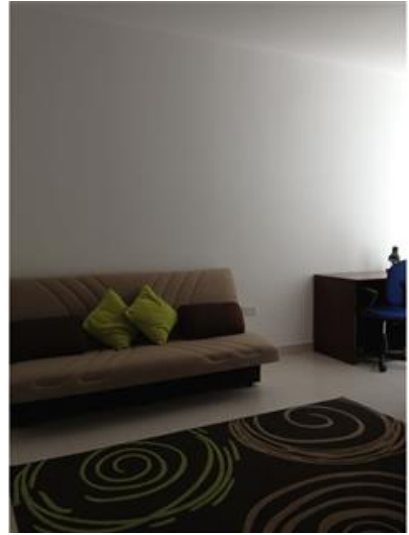
- ✓ Entrance Hall
- ✓ Balcony
- ✓ Pool

Rooms

- ✓ Double Bedroom : 0 x 0 m (0 m2)
- ✓ Double Bedroom : 0 x 0 m (0 m2)
- ✓ Double Bedroom : 0 x 0 m (0 m2)
- ✓ Bathroom : 0 x 0 m (0 m2)
- ✓ Bathroom : 0 x 0 m (0 m2)

Gallery







RE/MAX Elite - Sliema

RE/MAX Elite - Sliema

M: 21344204

E: elt@remax.com.mt

T: 21344204

RE/MAX Elite - Sliema

241, Tower Road, Sliema, Malta